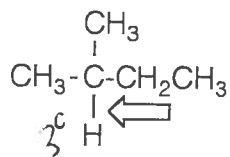


MAD ORG. CHEM. MIN. #12

LAST NAME \_\_\_\_\_ FIRST NAME \_\_\_\_\_

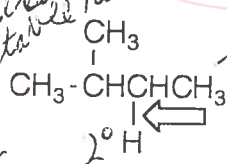
SS# \_\_\_\_\_

1. Place the following compounds in order of increasing bond dissociation energy for the indicated bond (1=lowest BDE, 3=highest BDE).



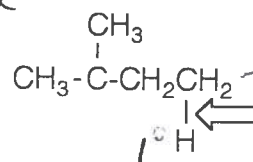
1

forms 3° radical  
- most stable radical  
- takes lowest E



2

forms 2° radical

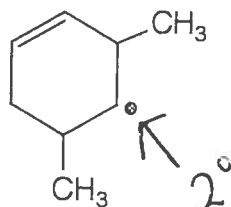


3

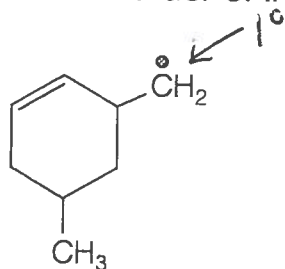
forms 1° radical  
- least stable radical  
- takes highest energy

most stable radical formed → least stable radical formed

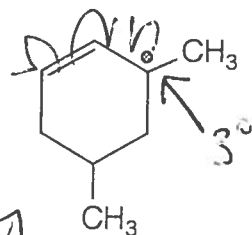
2. Place the following radicals in order of increasing stability (1=least, 4=most stable).



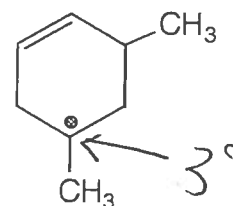
2



1



4



3

