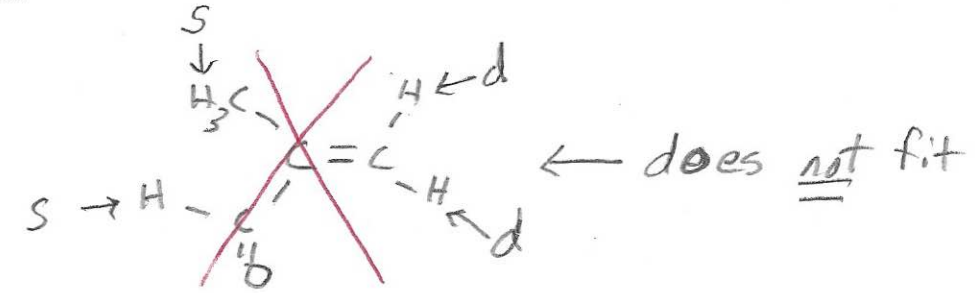
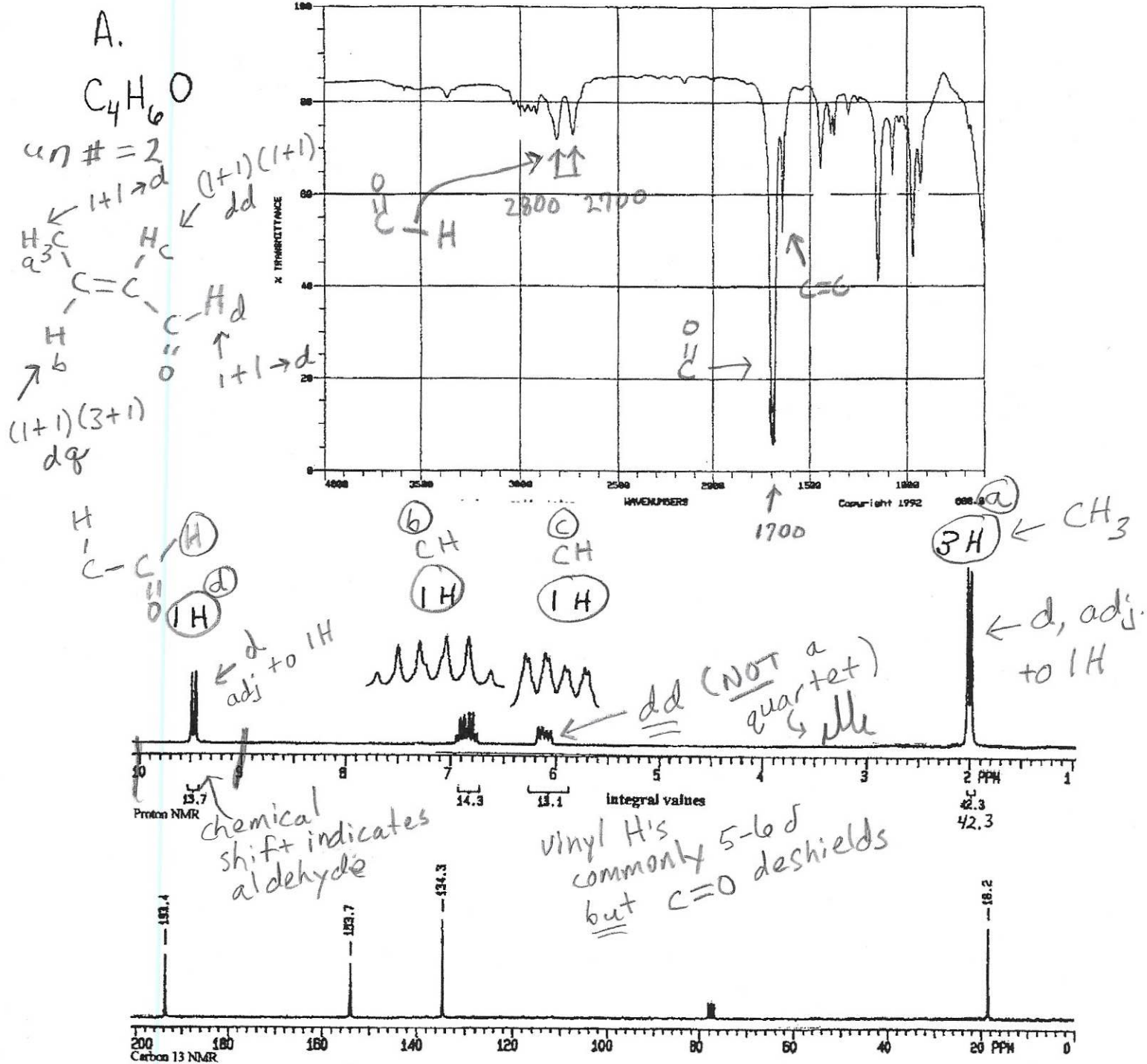
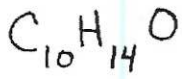


Spectroscopy Problem Set

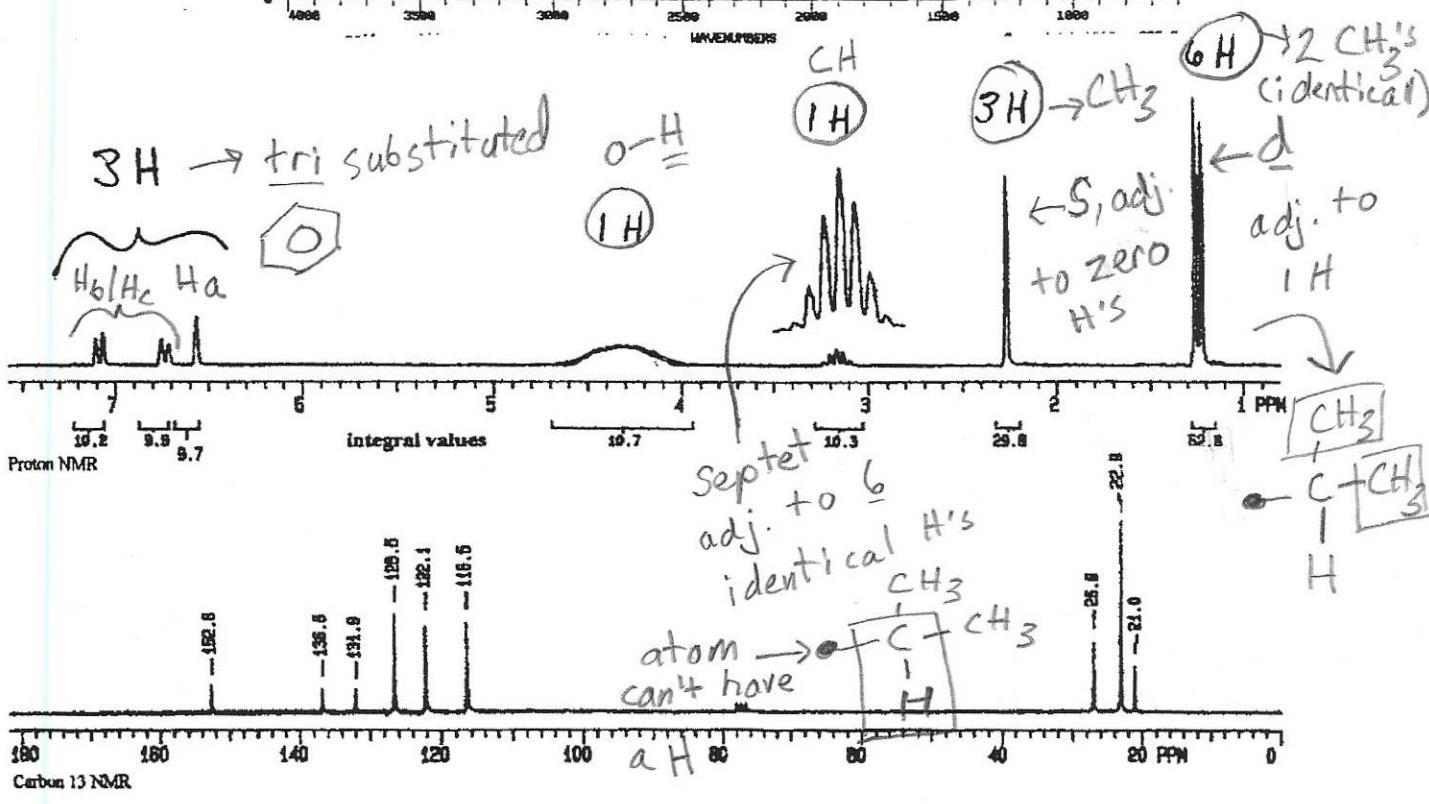
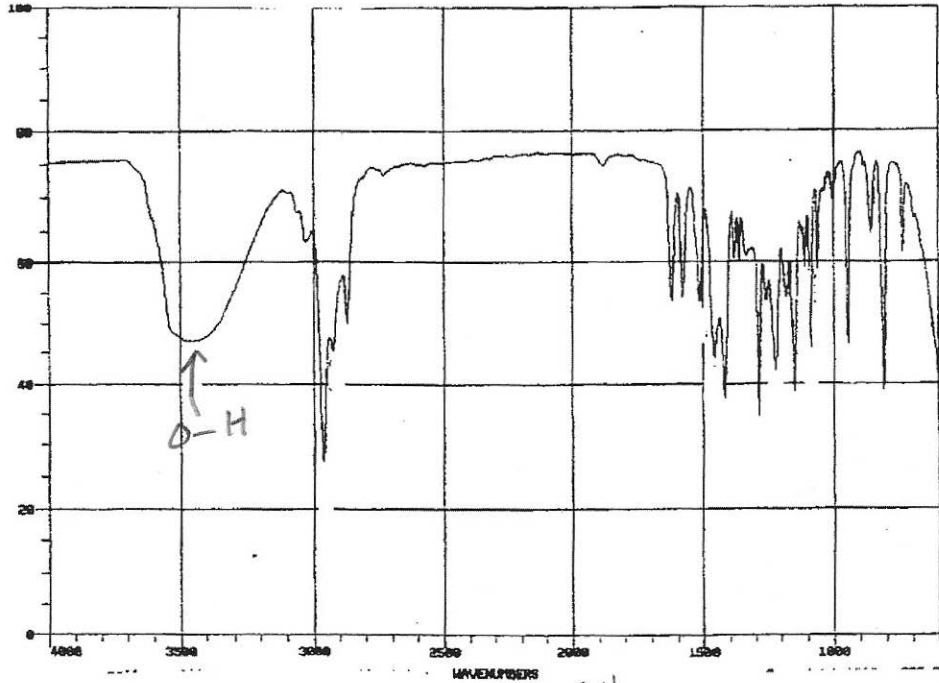
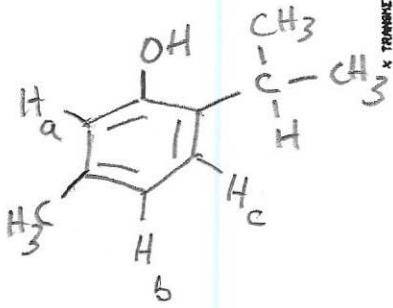
Please provide structures for the compounds represented by the following spectra.



B.



un# = 4



ester $\overset{\text{O}}{\parallel}{\text{C}}$ commonly ~ 1745 , so
 if an ester \rightarrow must be conjugated

C.
 $\text{C}_{11}\text{H}_{14}\text{O}_2$
 un# = 5

