

UNIVERSITY OF HOUSTON

FY 2012

PLANNING AND BUDGETING GUIDE



March 2011

University of Houston
FY2012 Planning and Budgeting Guide

Table of Contents

1.	Planning and Budgeting Memorandums	
	Vice President’s Memorandum FY2012 Planning & Budgeting Guidelines	7
	Provost Memorandum: Academic Affairs FY2012 Guidelines	9
2.	Formula Funding from the State of Texas	
	Appropriations FY2012/13 compared to 2010/11	15
	Elements of Formula Funding.....	16
	Base Period Semester Credit Hour Trends.....	17
3.	Budget Development Process	
	Flowchart	25
	Calendar	26
	Overview.....	27
	Budget Guidelines.....	28
	Budget Principles	31
4.	Budget Training	
	Budget Training Memo.....	35
	Budget Training web links to Budget Training Guide	36
5.	Appendices	
	University of Houston Mission and Goals	41
	Glossary of Budgeting Terms	42
	Full-Time Equivalent Position Definitions	45
	Standard Work Hours/week for Part-time Faculty.....	46
	Employer Matching Rate for Estimate of Benefit Costs	47
	Health Premium Rates and Contributions	48
	FY2011 Non-Health Insurance Rates	49
	FY2011 Health Insurance Rates	50
	FY2012 Endowment Income	52
	FY2012 Research Allocations	75
	FY2012 IDC Allocations	76
	FY2012 SSF Allocations	78
	Contact List	79

Planning and Budgeting Memorandums

UNIVERSITY of
HOUSTON

YOU ARE THE PRIDE

ACADEMIC AFFAIRS
ADMINISTRATION & FINANCE

226 E CULLEN BUILDING
HOUSTON, TEXAS 77204-2016

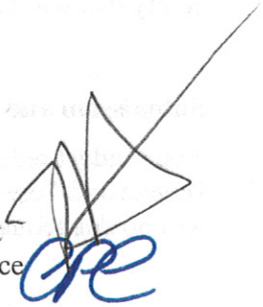
MEMORANDUM

DATE: March 2, 2011

TO: University of Houston Vice Presidents

FROM: John Antel, Senior Vice President for Academic Affairs and Provost
Carl Carlucci, Executive Vice President for Administration & Finance

RE: University of Houston FY 2012 Budget Reduction Planning Guidelines



Planning Assumptions

In advance of the legislative session, State Comptroller Susan Combs announced that state general revenue for the upcoming FY12-13 biennium would be \$14.8 billion less than what was available for the current biennium. This has translated into initial appropriations bills filed in the House of Representatives and Senate that reduce the biennial appropriation to UH by \$50.1 million (15.7%) and \$38.8 million (12.1%) respectively. This is on top of the 5% reduction we took for the current biennium.

Therefore, the development of budget reduction plans will be the major focus of the planning process this year. As was the case last year, it is our intent not to reduce your allocations across the board. Instead, we will consider the plans from the divisions as a whole and determine strategic cuts for the entire university. In doing so our goal is to preserve operations critical to the success of the university (particularly the academic/research enterprise), while reducing non-essential and duplicative costs.

Even in times of financial hardship, our annual planning process has always included a component for pursuing new initiatives. This year, however, we are going to defer this part of the process until later in the year. There are two reasons for this: (1) we will have a better sense of how to plan for new initiatives once we have a better understanding of what our state appropriation will be; and (2) we want to focus exclusively right now on how to negotiate the cuts. The UH divisions have already experienced significant budget reductions and reallocations over the past few years, to the point where further reductions will be much more difficult to negotiate. We believe this will require our full attention right now.

Budget Reduction Plans and Use of Fund Equity

Tom Ehardt will forward to you shortly the target amount you will be asked to plan for, as well as a spreadsheet for you to complete. In addition to completing the budget reduction plan spreadsheet, we ask that you write a brief narrative (2-3 pages) describing your cuts and their potential impact on your division. Given the size and potential complexity of these cuts, we understand that some of your proposed reductions may be difficult to implement immediately. To address this issue we will create a central fund equity pool, resources from which will be made available on a case by case basis to serve as a stop-gap until base cuts can be implemented. Currently, we are examining division budgets to determine the extent to which each can reasonably contribute to the fund equity pool. Contributions will not be across the board. Along with your target budget reduction amount, Tom Ehardt will forward to you the amount of fund equity that will be needed from your division.

Submission and Review of Plans

Your budget reduction plans are due to Ed Hugetz on or before April 8. In the interim, Mr. Hugetz and Tom Ehardt will be available to guide you in the preparation of these materials. We will hold meetings with each of the divisions to discuss their plans during the week of April 18.




UNIVERSITY OF HOUSTON SYSTEM
UNIVERSITY OF HOUSTON

Office of the Senior Vice Chancellor for Academic Affairs
UH System

Office of the Senior Vice President for Academic Affairs and Provost
University of Houston

MEMORANDUM

DATE: March 2, 2011
TO: University of Houston Deans
FROM: John Antel, Senior Vice President for Academic Affairs and Provost
RE: University of Houston FY 2012 Budget Reduction Planning Guidelines



Planning Assumptions

In advance of the legislative session, State Comptroller Susan Combs announced that state general revenue for the upcoming FY12-13 biennium would be \$14.8 billion less than what was available for the current biennium. This has translated into initial appropriations bills filed in the House of Representatives and Senate that reduce the biennial appropriation to UH by \$50.1 million (15.7%) and \$38.8 million (12.1%) respectively. This is on top of the 5% reduction we took for the current biennium.

Therefore, the development of budget reduction plans will be the major focus of the planning process this year. As was the case last year, it is our intent not to reduce your allocations across the board. Instead, we will consider the plans from the colleges and Academic Affairs administrative units as a whole and determine strategic cuts for the entire division. In doing so our goal is to preserve operations critical to the success of the academic/research enterprise, while reducing non-essential and duplicative costs.

Even in times of financial hardship, our annual planning process has always included a component for pursuing new initiatives. This year, however, we are going to defer this part of the process until later in the year. There are two reasons for this: (1) we will have a better sense of how to plan for new initiatives once we have a better understanding of what our state appropriation will be; and (2) we want to focus exclusively right now on how to negotiate the cuts. The UH colleges have already experienced significant budget reductions and reallocations over the past few years, to the point where further reductions will be much more difficult to negotiate. As a result, we are now facing difficult decisions that will likely impact not only administrative operations but the delivery of academic programs. This will require our full attention.

The impact of our budget reductions this year will be felt strongly by faculty, students and staff across campus. Therefore, in developing your reduction plans we ask that you take the steps necessary to ensure broad participation in your college. Your process should extend down to the departmental level to facilitate meaningful shared governance on behalf of faculty. You should also create opportunities for students and staff to participate. In addition, at the division level, I have appointed a faculty-led budget reduction advisory group to recommend principles for how budget reductions should be made that involve faculty and academic programs.

Components of Budget Reduction Plans

Craig Ness will forward to you shortly a target amount you will be asked to plan for, as well as a spreadsheet for you to complete. The target amounts will not be the same percentage of budget for all colleges, since we are not implementing across the board reductions. To lessen the burden of the cuts, central resources will be reduced off the top to lower the colleges' target amounts. We will also apply anticipated resources generated through forecast enrollment increases next year for the same purpose. In developing your plans, we encourage you to look at administrative expenses and inefficiencies as a first line of defense. However, given the extensive reductions and reallocations that have taken place over the past few years, it may be that reductions impacting faculty and academic programs will be necessary, as well. Since the deans retreat in January, we have examined the college budgets and identified several areas where there appear to be opportunities for reduction. They include:

- Consolidation of Support Services: Historically, there has been some duplication of administrative, IT and student support services across departments and programs in individual colleges. As was the case last year, we ask that you consider the extent to which these services can be further consolidated in order to protect academic budgets.
- Travel and Business Expense: Although we reduced travel and business expense across the board to meet last year's state reduction, expenditures since then have not abated in most instances. We realize that these activities can be very important to the colleges. Nevertheless, when faced with potential reductions to instruction, academic programs and faculty, we must seriously consider scaling back these expenditures.
- Additional Compensation: Faculty members (and some administrators) often receive an administrative stipend or overload when they accept additional administrative assignments within the college, teach an additional course, or participate in other non-instructional activities. The colleges should consider the extent to which they can afford additional compensation, especially as it relates to non-instructional, non-revenue-generating activities.
- More Efficient Class Scheduling: The University of Houston can reduce costs and/or increase revenue by improved class scheduling – for example, delivery of fewer low-demand, low-enrollment courses (particularly in the core); increasing class size when it is responsible to do so; following the minimum undergraduate class size requirement of 10; adhering to course delivery time bands; and aligning enrollment demand with appropriate classroom size.

In addition to completing the budget reduction plan spreadsheet, we ask that you write a 2-5 page narrative describing your cuts and their potential impact on your college. In addition to describing cuts you might take in other areas, this narrative should contain sections that address

each of the cost issues raised above (i.e., consolidation of support services, travel and business expense, additional compensation, class scheduling), identifying the extent to which reductions in these areas are possible or not possible as the case may be. Finally, in identifying reductions, budgets for graduate students should not be included, as they are critical to the tier one aspirations of the university. Cuts to instructional budgets must also be limited to administrative stipends and overloads.

Use of Fund Equity

Given the size and potential complexity of these cuts, we understand that some of your proposed reductions may be difficult to implement immediately. To address this issue we will create a central fund equity pool, resources from which will be distributed to the colleges on a case by case basis to serve as a stop-gap until base cuts can be implemented. This pool will be created through fund equity from both the central administration and the colleges (from E&G state support and general designated tuition). We are currently examining college financials to determine the extent to which you can reasonably contribute to the fund equity pool. Contributions will not be across the board. Along with your target budget reduction amount, Craig Ness will forward to you the amount of fund equity that will be needed from your college. At the present time, you are not being asked to plan for the use of fund equity. We will consider this option once we have reviewed and discussed your planned reductions with you.

Faculty Searches

Another strategy we will implement to reduce the impact of the budget reductions is to carefully monitor faculty searches and in some instances slow the hiring process. To that end, we request that active searches for replacement faculty who would begin work in fall 2011 be completed (that is, an offer made) by April 1. Moving forward on all other approved searches and open positions will be addressed on a case-by-case basis.

Submission and Review of Plans

Your budget reduction plans are due to Ed Hugetz on or before April 1. In the interim, Mr. Hugetz and Craig Ness will be available to answer any questions you might have or provide you with additional information. My staff and I will hold initial meetings with you to discuss your plans during the weeks of April 4 and April 11. I anticipate this will be an iterative process that will require additional discussions until we know our final appropriation and can make decisions about the actual reductions.

Formula Funding from the State of Texas

HB1 Final (5-26-11) vs FY10-FY11 Original Base
(FY10-FY11 TRBs to UHSA for comparative purposes)

University of Houston

Formula	-----FY2010-2011 Biennium-----			Conference Committee HB1 (5-26-11)			-----FY2012-2013 Biennium-----		----Biennial Change----	
	Appropriated FY2010	Appropriated FY2011	Biennial Total	Recommended FY2012	Recommended FY2013	Biennial Total	Dollars	Percent		
Operations Support	\$ 140,017,254	\$ 140,017,254	\$ 280,034,508	\$ 134,682,795	\$ 134,682,794	\$ 269,365,589	\$ (10,668,919)	-3.8%		
Teaching Experience	2,730,905	2,730,905	5,461,810	2,642,533	2,642,533	5,285,066	(176,744)	-3.2%		
E&G Space Support	31,523,918	31,523,918	63,047,836	24,995,042	24,995,042	49,990,084	(13,057,752)	-20.7%		
SUBTOTAL	174,272,077	174,272,077	348,544,154	162,320,370	162,320,369	324,640,739	(23,903,415)	-6.9%		
Special Items										
<i>Restructured Item</i>										
Texas Center for Superconductivity	3,607,625	3,607,625	7,215,250	-	-	-	(7,215,250)	-100.0%		
Houston Partnership for Space Exploration	349,986	349,986	699,972	-	-	-	(699,972)	-100.0%		
Health Law and Policy Institute	290,937	290,937	581,874	-	-	-	(581,874)	-100.0%		
Center for Public Policy	249,375	249,375	498,750	-	-	-	(498,750)	-100.0%		
Partnerships-Support Publ. Schools	1,369,247	1,369,247	2,738,494	-	-	-	(2,738,494)	-100.0%		
Commercial Development of Space	400,901	400,901	801,802	-	-	-	(801,802)	-100.0%		
Learning and Computation Center	1,935,805	1,935,805	3,871,610	-	-	-	(3,871,610)	-100.0%		
Energy Research	2,500,000	2,500,000	5,000,000	-	-	-	(5,000,000)	-100.0%		
Tier 1- Complex System Research Cluster	-	-	-	690,000	690,000	1,380,000	1,380,000	na		
Tier 1- Energy Research Cluster	-	-	-	3,567,500	3,567,500	7,135,000	7,135,000	na		
Tier 1- Health Sciences Research Cluster	-	-	-	2,217,500	2,217,500	4,435,000	4,435,000	na		
Tier 1- Education & Community Advancement	-	-	-	1,151,509	1,151,509	2,303,018	2,303,018	na		
Subtotal	10,703,876	10,703,876	21,407,752	7,626,509	7,626,509	15,253,018	(6,154,734)	-28.8%		
Small Business Development Center	3,070,697	3,070,697	6,141,394	3,070,697	3,070,697	6,141,394	-	0.0%		
Institutional Enhancement	4,753,967	4,753,967	9,507,934	3,387,201	3,387,201	6,774,402	(2,733,532)	-28.8%		
SUBTOTAL	18,528,540	18,528,540	37,057,080	14,084,407	14,084,407	28,168,814	(8,888,266)	-24.0%		
Other Items										
Texas Competitive Knowledge Fund	4,535,210	4,535,210	9,070,420	3,061,979	3,061,979	6,123,958	(2,946,462)	-32.5%		
Research Development Fund	6,380,651	6,380,651	12,761,302	5,352,736	5,352,736	10,705,472	(2,055,830)	-16.1%		
Organized Activities	1,582,671	1,582,671	3,165,342	-	-	-	(3,165,342)	-100.0%		
Texas Public Education Grant	6,347,054	6,361,042	12,708,096	6,995,555	7,137,368	14,132,923	1,424,827	11.2%		
Worker's Compensation Insurance	491,131	491,131	982,262	349,930	349,930	699,860	(282,402)	-28.8%		
Staff Group Insurance Premiums	5,781,103	6,174,218	11,955,321	4,996,924	5,346,713	10,343,637	(1,611,684)	-13.5%		
SUBTOTAL	25,117,820	25,524,923	50,642,743	20,757,124	21,248,726	42,005,850	(8,636,893)	-17.1%		
TOTAL	\$ 217,918,437	\$ 218,325,540	\$ 436,243,977	\$ 197,161,901	\$ 197,653,502	\$ 394,815,403	\$ (41,428,574)	-9.5%		
Method of Finance										
Net General Revenue	\$ 149,723,264	\$ 155,699,453	\$ 305,422,717	\$ 129,132,679	\$ 128,198,995	\$ 257,331,674	\$ (48,091,043)	-15.7%		
ARRA Funds (for Formula Funding)	5,707,005	-	5,707,005	-	-	-	(5,707,005)	-100.0%		
GR & ARRA SUBTOTAL	155,430,269	155,699,453	311,129,722	129,132,679	128,198,995	257,331,674	(53,798,048)	-17.3%		
Board Authorized Tuition Increases	13,501,189	13,501,189	27,002,378	13,684,074	13,684,074	27,368,148	365,770	1.4%		
Estimated E&G Income	48,986,979	49,124,898	98,111,877	54,345,148	55,770,433	110,115,581	12,003,704	12.2%		
GR DEDICATED SUBTOTAL	62,488,168	62,626,087	125,114,255	68,029,222	69,454,507	137,483,729	12,369,474	9.9%		
TOTAL	\$ 217,918,437	\$ 218,325,540	\$ 436,243,977	\$ 197,161,901	\$ 197,653,502	\$ 394,815,403	\$ (41,428,574)	-9.5%		
Less Estimated General Revenue Rider Reductions				(3,438,437)	(5,128,002)	(8,566,439)	(8,566,439)	na		
Rider Reduction % of GR (includes share that will go to non-E&G)				-2.7%	-4.0%	-3.3%				
FY12 vs FY11 Original w/o Riders				-\$26,566,774						
FY12 vs FY11 Original with Riders				-\$30,005,211						
FTE Positions										
Authorized	2,839.3	2,839.3		2,700.0	2,700.0					
Actual	2,767.4									
Additional One-time Funding										
Energy Research (one-time ARRA funds)	\$ 3,000,000		\$ 3,000,000							

Elements of Formula Funding FY2012-13 Biennium

1. Instruction and Operations Formula (about 81% of total formula)

(Funding for Faculty Salaries, DOE, Instructional Administration, Library, Research Enhancement, Student Services, Institutional Support)

Funding equals semester credit hours times **53.71** times rate below:

	<u>Lower Division</u>	<u>Upper Division</u>	<u>Masters</u>	<u>Doctoral</u>	<u>Special Professional</u>
Liberal Arts	1.00	1.70	4.07	9.26	
Science	1.74	2.95	8.07	20.30	
Fine Arts	1.40	2.31	5.44	7.07	
Teacher Ed	1.41	1.73	2.34	7.58	
Agriculture	1.88	2.46	7.01	9.35	
Engineering	2.41	3.82	7.47	15.81	
Home Economics	1.04	1.68	2.88	6.97	
Law					3.92
Social Services	1.90	2.03	2.93	14.40	
Library Science	1.33	1.08	2.58	7.50	
Vocational Training	1.44	1.86			
Physical Training	1.35	1.20			
Health Services	1.23	1.89	3.23	9.14	2.42
Pharmacy	1.27	4.53	23.49	30.57	3.77
Business Admin.	1.09	1.70	3.26	24.41	18.99
Optometry			5.46	19.12	7.00
Teacher Ed Practice	1.43	1.74			
Technology	1.96	2.42	4.07	2.95	
Nursing	1.96	2.35	4.45	1.94	
Developmental Ed	1.00				
Veterinay Medicine					15.05

2. Teaching Experience Supplement (about 3 % of total formula)

Annual funding equals 10 percent of funds generated above from undergraduate hours taught by tenured or tenure track faculty.

3. E&G Space Support (about 16% of total formula)

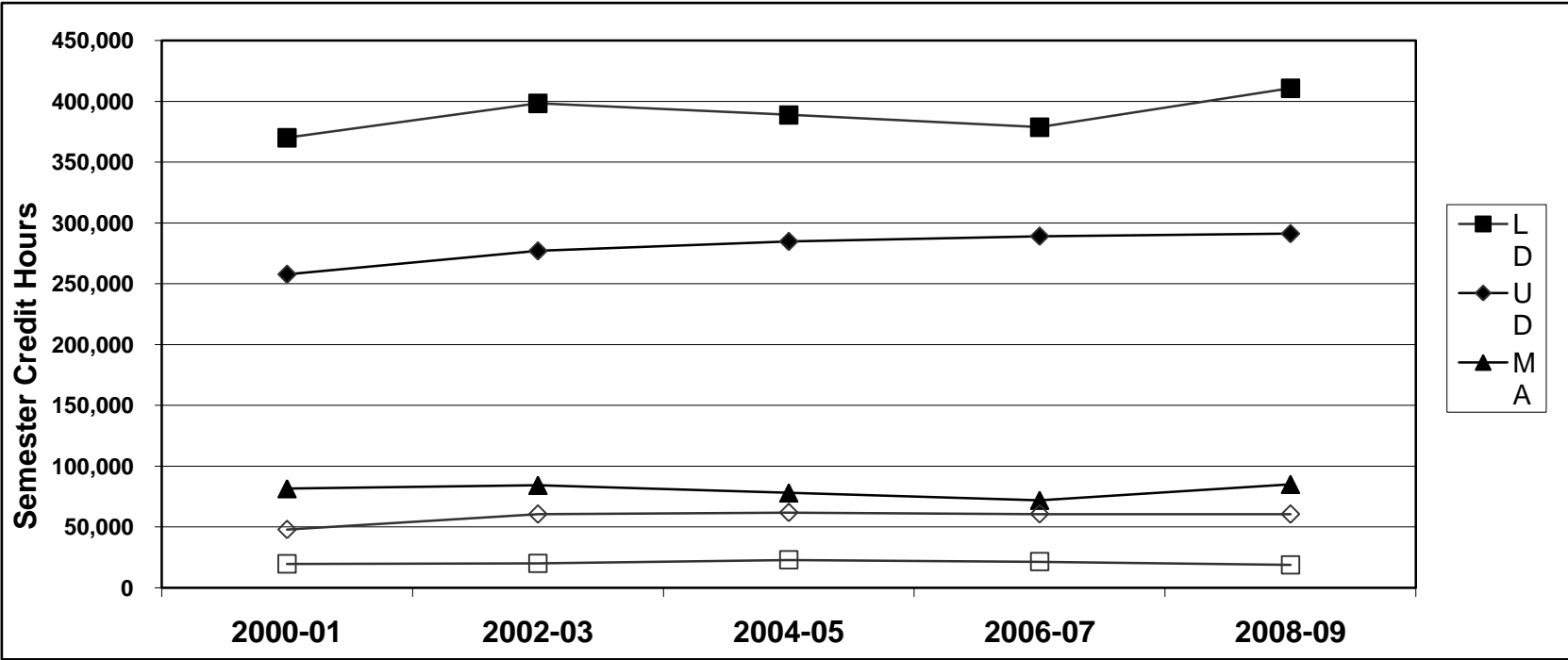
(Funding for Physical Plant and Utilities)

Annual funding equals the Coordinating Board's space standard in E&G square feet times **\$5.25**/square foot

University of Houston Base Period Semester Credit Hour Trends

	<u>2000-01</u>	<u>2002-03</u>	<u>2004-05</u>	<u>2006-07</u>	<u>2008-09</u>	<u>00-01 to 02-03</u>	<u>02-03 to 04-05</u>	<u>04-05 to 06-07</u>	<u>06-07 to 08-09</u>	Eight-year Change 00-01 to 08-09
University of Houston Total										
Lower Division	370,011	398,242	388,791	378,689	410,699	8%	-2%	-3%	3%	11%
Upper Division	257,830	277,026	284,825	289,120	291,226	7%	3%	2%	16%	13%
Masters	81,576	84,365	78,095	72,011	85,139	3%	-7%	-8%	-18%	4%
Doctoral	19,677	20,105	22,989	21,532	18,880	2%	14%	-6%	14%	-4%
Special Profesn'l	47,967	60,619	61,895	60,773	60,610	26%	2%	-2%	32%	26%
Total SCH	<u>777,061</u>	<u>840,357</u>	<u>836,595</u>	<u>822,125</u>	<u>866,554</u>	8%	0%	-2%	7%	12%

Trends from 2000-01 through 2008-09

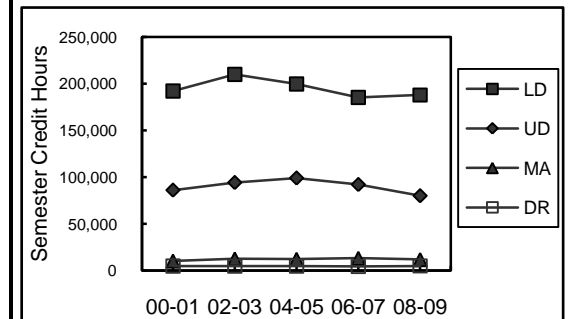
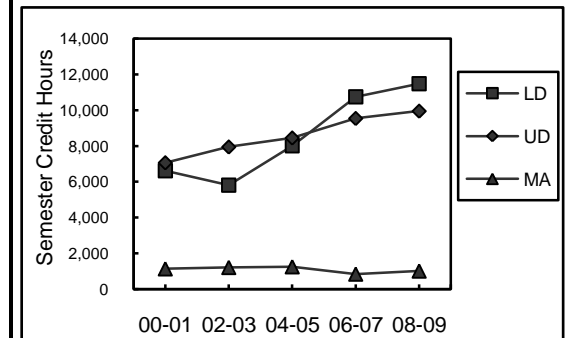
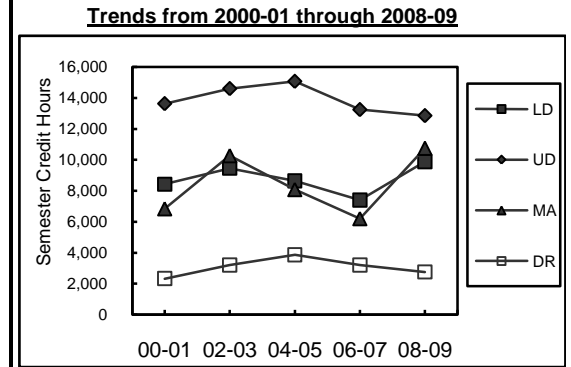


University of Houston Base Period Semester Credit Hour Trends

	<u>2000-01</u>	<u>2002-03</u>	<u>2004-05</u>	<u>2006-07</u>	<u>2008-09</u>	-----Biennial Percent Change-----				Eight-year Change 00-01 to 08-09	Trends from 2000-01 through 2008-09
						00-01 to 02-03	02-03 to 04-05	04-05 to 06-07	06-07 to 08-09		
Architecture											
Lower Division	5,392	5,707	6,251	5,978	6,164	6%	10%	-4%	3%	14%	
Upper Division	6,895	7,683	8,089	7,741	7,187	11%	5%	-4%	-7%	4%	
Masters	1,240	1,560	2,088	1,841	1,586	26%	34%	-12%	-14%	28%	
Doctoral											
Special Profesn'l											
Total SCH	<u>13,527</u>	<u>14,950</u>	<u>16,428</u>	<u>15,560</u>	<u>14,937</u>	11%	10%	-5%	-4%	10%	
Business Administration											
Lower Division	19,137	20,511	18,712	18,236	26,114	7%	-9%	-3%	43%	36%	
Upper Division	63,213	73,996	72,308	78,275	83,438	17%	-2%	8%	7%	32%	
Masters	21,408	20,294	19,295	17,382	24,058	-5%	-5%	-10%	38%	12%	
Doctoral	927	909	1,149	1,185	1,101	-2%	26%	3%	-7%	19%	
Special Profesn'l											
Total SCH	<u>104,685</u>	<u>115,710</u>	<u>111,464</u>	<u>115,078</u>	<u>134,711</u>	11%	-4%	3%	17%	29%	
Education											
Lower Division	9,615	11,864	15,847	16,623	23,068	23%	34%	5%		140%	
Upper Division	21,766	26,507	31,315	35,947	42,365	22%	18%	15%		95%	
Masters	20,190	19,617	15,540	11,638	10,165	-3%	-21%	-25%		-50%	
Doctoral	6,008	5,009	5,491	5,047	3,647	-17%	10%	-8%		-39%	
Special Profesn'l											
Total SCH	<u>57,579</u>	<u>62,997</u>	<u>68,193</u>	<u>69,255</u>	<u>79,245</u>	9%	8%	2%		38%	

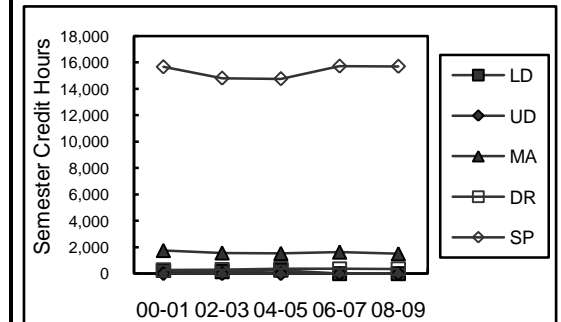
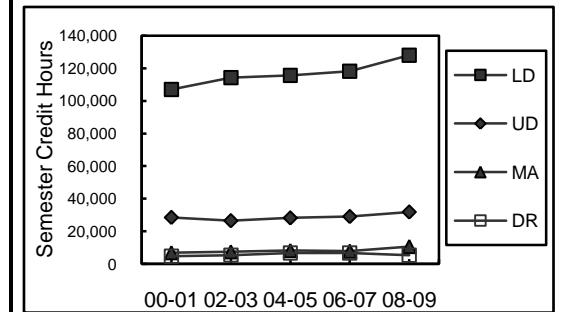
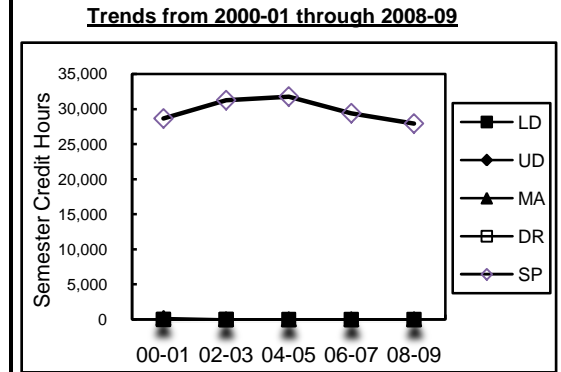
University of Houston Base Period Semester Credit Hour Trends

	2000-01	2002-03	2004-05	2006-07	2008-09	-----Biennial Percent Change-----				Eight-year Change 00-01 to 08-09
						00-01 to 02-03	02-03 to 04-05	04-05 to 06-07	06-07 to 08-09	
Engineering										
Lower Division	8,419	9,450	8,633	7,393	9,879	12%	-9%	-14%	34%	17%
Upper Division	13,627	14,594	15,060	13,243	12,855	7%	3%	-12%	-3%	-6%
Masters	6,839	10,257	8,077	6,204	10,738	50%	-21%	-23%	73%	57%
Doctoral	2,325	3,202	3,862	3,202	2,751	38%	21%	-17%	-14%	18%
Special Profesn'l										
Total SCH	31,210	37,503	35,632	30,042	36,223	20%	-5%	-16%	21%	16%
Hotel & Restaurant Management										
Lower Division	6,617	5,812	8,009	10,754	11,486	-12%	38%	34%	7%	74%
Upper Division	7,067	7,950	8,453	9,543	9,953	12%	6%	13%	4%	41%
Masters	1,143	1,218	1,257	850	1,020	7%	3%	-32%	20%	-11%
Doctoral										
Special Profesn'l										
Total SCH	14,827	14,980	17,719	21,147	22,459	1%	18%	19%	6%	51%
College of Liberal Arts and Social Sciences										
Lower Division	192,011	209,992	199,728	185,178	187,813	9%	-5%	-7%	1%	-2%
Upper Division	86,147	94,321	99,151	92,167	80,117	9%	5%	-7%	-13%	-7%
Masters	10,452	12,723	12,311	13,326	12,005	22%	-3%	8%	-10%	15%
Doctoral	4,863	4,794	4,829	4,406	4,970	-1%	1%	-9%	13%	2%
Special Profesn'l										
Total SCH	293,473	321,830	316,019	295,077	284,905	10%	-2%	-7%	-3%	-3%



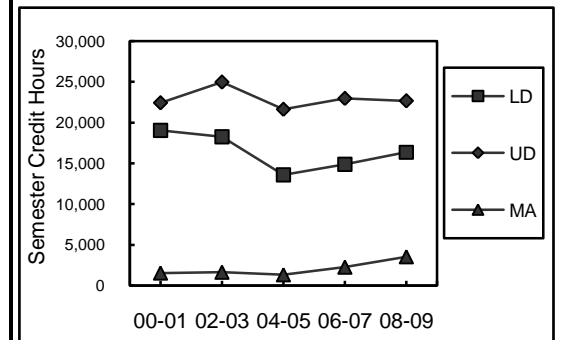
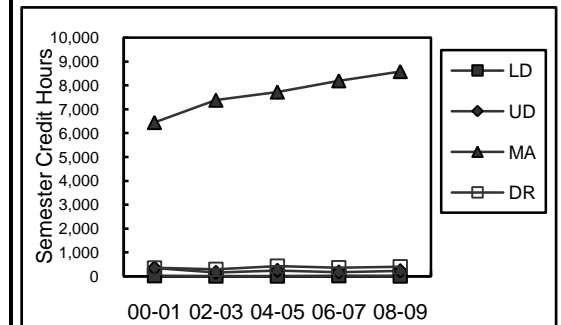
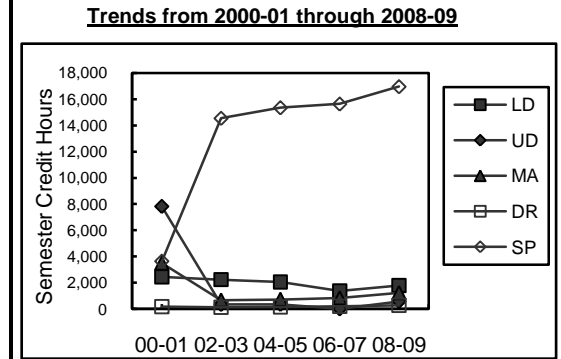
University of Houston Base Period Semester Credit Hour Trends

	2000-01	2002-03	2004-05	2006-07	2008-09	-----Biennial Percent Change-----				Eight-year Change 00-01 to 08-09
						00-01 to 02-03	02-03 to 04-05	04-05 to 06-07	06-07 to 08-09	
Law										
Lower Division										
Upper Division										
Masters	195	4	0	0	0	-98%	-100%	0%	0%	-100%
Doctoral										
Special Profesn'l	28,661	31,258	31,774	29,404	27,936	9%	2%	-7%	-5%	-3%
Total SCH	28,856	31,262	31,774	29,404	27,936	8%	2%	-7%	-5%	-3%
Natural Sciences and Mathematics										
Lower Division	107,076	114,246	115,717	118,269	128,031	7%	1%	2%	8%	20%
Upper Division	28,538	26,529	28,233	29,075	31,851	-7%	6%	3%	10%	12%
Masters	6,863	7,416	8,199	7,830	10,690	8%	11%	-5%	37%	56%
Doctoral	4,763	5,461	6,701	6,760	5,373	15%	23%	1%	-21%	13%
Special Profesn'l										
Total SCH	147,240	153,652	158,850	161,934	175,945	4%	3%	2%	9%	19%
Optometry										
Lower Division	246	159	261	0	0	-35%	64%	-100%	0%	-100%
Upper Division	1	0	0	1	0	-100%	0%	0%	-100%	-100%
Masters	1,768	1,580	1,544	1,646	1,520	-11%	-2%	7%	-8%	-14%
Doctoral	271	310	379	366	362	14%	22%	-3%	-1%	34%
Special Profesn'l	15,672	14,813	14,766	15,728	15,709	-5%	0%	7%	0%	0%
Total SCH	17,958	16,862	16,950	17,741	17,591	-6%	1%	5%	-1%	-2%



University of Houston Base Period Semester Credit Hour Trends

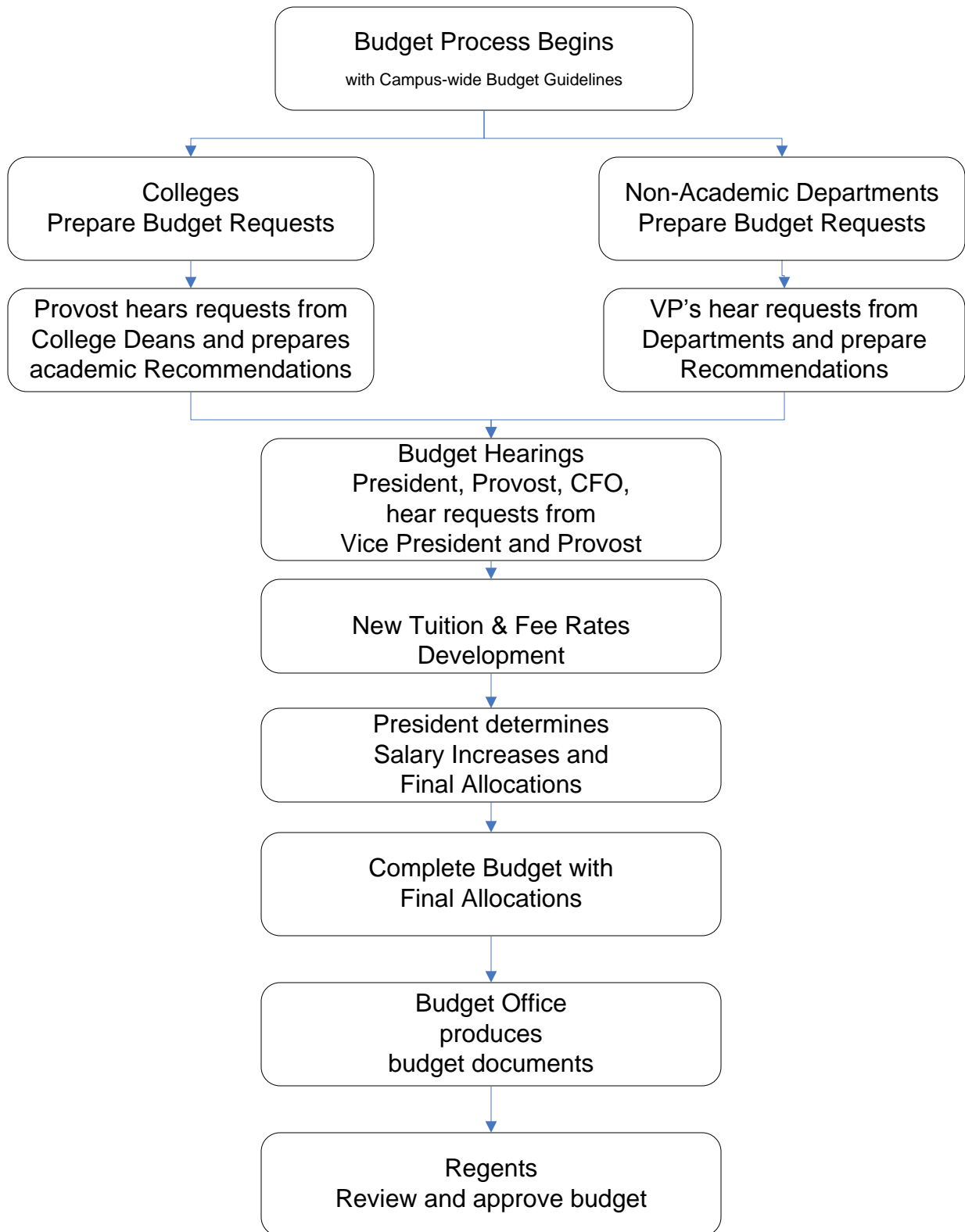
	2000-01	2002-03	2004-05	2006-07	2008-09	-----Biennial Percent Change-----				Eight-year Change 00-01 to 08-09
						00-01 to 02-03	02-03 to 04-05	04-05 to 06-07	06-07 to 08-09	
Pharmacy										
Lower Division	2,444	2,233	2,048	1,364	1,785	-9%	-8%	-33%	31%	-27%
Upper Division	7,813	340	345	0	573	-96%	1%	-100%	0%	-93%
Masters	3,494	677	736	840	1,241	-81%	9%	14%	48%	-64%
Doctoral	173	136	154	215	280	-21%	13%	40%	30%	62%
Special Profesn'l	3,634	14,548	15,355	15,641	16,965	300%	6%	2%	8%	367%
Total SCH	17,558	17,934	18,638	18,060	20,844	2%	4%	-3%	15%	19%
Social Work										
Lower Division	18	9	12	18	15	-50%	33%	50%	-17%	-17%
Upper Division	347	160	246	177	228	-54%	54%	-28%	29%	-34%
Masters	6,454	7,389	7,732	8,202	8,590	14%	5%	6%	5%	33%
Doctoral	347	284	424	351	396	-18%	49%	-17%	13%	14%
Special Profesn'l										
Total SCH	7,166	7,842	8,414	8,748	9,229	9%	7%	4%	5%	29%
Technology										
Lower Division	19,036	18,259	13,573	14,876	16,344	-4%	-26%	10%	10%	-14%
Upper Division	22,416	24,946	21,625	22,951	22,659	11%	-13%	6%	-1%	1%
Masters	1,530	1,630	1,316	2,252	3,526	7%	-19%	71%	57%	130%
Doctoral										
Special Profesn'l										
Total SCH	42,982	44,835	36,514	40,079	42,529	4%	-19%	10%	6%	-1%



Budget Development Process

University of Houston

FY2012 Operating Budget Process Flowchart



FY2012 UH System / University of Houston
Combined Planning, Tuition & Fees, Budgeting Calendars

Week of	Planning	Tuition & Fees	Budget
2010			
Sep-06	Preliminary Acad Affairs Pln & Budget Prep		
Sep-13	Preliminary Acad Affairs Pln & Budget Prep		
Sep-20			
Sep-27			
Oct-04			
Oct-11	FY12 Division/College Planning Guidelines	T&F Committee Appointed	
Oct-18		T&F Committee Meeting	
Oct-25	FY12 Division/College Planning Guidelines distributed College planning meetings begin	T&F Committee Meeting	FY12 Division/College Planning Guidelines Distributed
Nov-01	College planning meetings		
Nov-08		T&F Committee Meeting	
Nov-15			
Nov-22		BOR Meeting November 17	
Nov-29		Thanksgiving Week	
Dec-06	FY12 UH System Planning Guidelines Distributed	Finals - Dec 8-17	
Dec-13			
Dec-20	College Plans Due to Provost		
Dec-27		Holidays: December 24 - January 1	
2011			
Jan-03		Consult with Board members regarding tuition & fee proposals	
Jan-10		Consult with Board members regarding tuition & fee proposals First Day of Regular Legis. Session - Jan 11	Budget Development G/L's to Colleges & Divisions: Endowment Income, IDC distribution, Interest Income, etc.
Jan-17		First day of classes Jan 18 Campus Materials due to UHSA Jan 21	
Jan-24		UH Public Hearings FY2012 Tuition & Fees BOR Agenda due to BOR Office January 28	
Jan-31	College Plan & Budget Hearings		BDM Training
Feb-07			
Feb-14		BOR Meeting February 16 (Approve Tuition & Fees)	BDM - Old year clean up
Feb-21			
Feb-28			
Mar-07			
Mar-14		Spring Break	
Mar-21	Division Plans Due to the Provost and CFO		BDM - New year data entry - Restricted Funds
Mar-28	Division Plan & Budget Hearings		
Apr-04			
Apr-11	Materials for Campus Hearings due		Materials for Campus Hearings due
Apr-18			
Apr-25	Campuses Budget Hearings with Chancellor		Campuses Budget Hearings with Chancellor
May-02			
May-09			
May-16		BOR Meeting May 18	
May-23			
May-30		Last Day of Regular Legis. Session - May 30	
Jun-06			BDM - New year data entry - Central Funds
Jun-13			
Jun-20			
Jun-27			
Jul-04			
Jul-11			
Jul-18	Final Campus Plans & Budgets Due to UHS		Final Campus Plans & Budgets Due to UHS
Jul-25	Assembly of Exec Plan & Budget		Assembly of Exec Plan & Budget
Aug-01	Distribution to BOR		Distribution to BOR
Aug-08			
Aug-15		BOR Meeting August 17 (Approve Budget)	
Aug-22			
Aug-29			

The University of Houston
Operating Budget for the Fiscal Year 2012

Executive Overview

The annual budget preparation process includes estimating revenues and expenditures. This includes all Educational and General Funds (Group1), Designated Funds (Group 2), Auxiliary Funds (Group 3), and Restricted Funds (Group 4 and 5). Budgets are developed at the detail (cost center) level for all funds, except Sponsored Programs (Group 5). Sponsored Program cost centers are estimated by the Research Division and reported at the college level.

The final product of this process will convey: How much money we have to spend; where we got the money; what we plan to do with it; and why we plan to spend it in the way we are proposing.

Each operating unit is responsible for developing its own budget request. The dean or vice president of each operating unit will prepare a budget request in accordance with these guidelines. This request will be presented to the provost (in the case of a college) or the vice president (in the case of an administrative unit). The provost and vice presidents will then present the budget request for their respective divisions to the president. Requests should be justified within the context of the institutional goals as articulated by the president. After all the requests have been presented, the president will determine the final allocation of funds for the budget, within the context of the university goals.

Units are responsible for entering their budget requests directly into the Budget Development Module (BDM). After the final allocations have been communicated to the colleges and divisions, adjustments will be made to BDM.

Other highlights of the FY12 Operating Budget are:

State mandated statutory tuition rates will be at \$50 per semester credit hour (SCH) for undergraduate resident students. Nonresident tuition will be \$363 per SCH. Tuition and fee increases for FY2012 will be submitted at the February 14th, 2011 Board of Regents meeting.

Requests for *new positions* may be included in the material provided to the Provost or President.

All budgets from non-central sources must include projections for *revenue*. This should be based on historical data with adjustments for new activities in the coming year. Be prepared to explain significant variances from this year's budget.

Do not budget large amounts in unallocated cost centers. Funds should be allocated within the specific colleges or divisions where they will be used. Prudent contingencies, where appropriate, are allowed but should be justifiable.

The University of Houston
Operating Budget for the Fiscal Year 2012

Budget Guidelines

Positions

All continuing positions should be included in the budget. Dollars budgeted for operating expenses should not normally be converted to positions during the course of the fiscal year. Likewise, positions should not be budgeted with a plan to lapse significant unused funds for other purposes.

It is not normally appropriate to fund continuing positions with temporary or one-time dollars.

Deans and vice presidents are encouraged to lapse unspent salary dollars at regular intervals throughout the year. These lapse funds should be reallocated to areas of the college or division to gain maximum benefit.

A. Positions not Filled

Budget dollars and FTE for positions not filled will be budgeted at the pool (node) level, not individual positions.

B. New Positions

Requests for new positions must be adequately justified and approved by the president. Only new positions approved through this process may be included in the budget.

Benefits

A. E&G Funds (Group 1) (with the exception of HEAF) - Benefits for E&G state cost centers will be budgeted centrally, not at the college/division level.

B. Local Funds and Sponsored Programs (Groups 2-5) – As a general rule, the benefit rate should be 32% of employees salaries. Specific calculations can be made based on benefit rates located in the appendices section.

E&G Fund Budgets

A. Budgeting Prior Year Balances

Unexpended balances in most state cost centers will be carried forward as fund equity at the beginning of the fiscal year. The budgeting of this equity for the new fiscal year will not be included in the FY2012 year.

Carryforward dollars should be requested after the first of the fiscal year for new program start-up costs, equipment, professional development and other one-time uses. **Carryforward dollars cannot be used to fund core operations or continuing positions.**

B. Premium Tuition

Estimates for Premium Tuition—for the colleges of Law, Optometry, and Pharmacy—will be based on enrollment projections from Enrollment Services. Premium tuition revenue and expenditure is budgeted in the respective colleges during the budget process. Premium tuition designated fund code is 2160.

It is the responsibility of the college to monitor the revenue realized in the cost center throughout the year. If necessary, a modification to the premium tuition should be submitted to the budget office in the form of a budget journal so actual is more closely matched to the realized revenue.

Local Funds Budget

The total budget, including the number of staff positions and the size of the maintenance and operation budgets, will be based on need, current projected income, and fund balance available at the start of the fiscal year.

A. Fund Equity

Fund equity balances remain in their respective cost centers. Year-end budget balances available (BBA's) in non-state cost centers are **not** brought forward at the beginning of the fiscal year. It will be necessary to budget the portion of the unbudgeted fund equity if it will be relied upon to fund the operations of the unit. However, the fund equity for the following funds will **not** be budgeted for FY2012:

- Fund 2064 and 2079
- All State cost centers with the exception of HEAF

At the beginning of the fiscal year, carryforward budgets will be adjusted down if budgeted equity amount is greater than the equity balance available at the beginning of the fiscal year.

B. Revenue

Each Designated and Auxiliary Enterprise unit is responsible for providing revenue estimates based on program activity and rate structure. At the end of the fiscal year, actual expenses may not exceed actual revenue plus fund balance. Each college is responsible for monitoring the revenue realized in their cost centers throughout the year. The budgets should be reduced by the department at any point during the year at which the full recognition of the revenue is doubtful.

The use of Indirect Cost (IDC) recovery revenues is split between Research and the academic units. Revenue estimates and expenditure allocations are provided each year by Research. These allocations are communicated through the budget office. The departments are responsible for the budgeting of their allocated IDC.

Estimated endowment income distribution is calculated by Treasury and is located in the appendices section of this book. It is the responsibility of the college/division to budget this investment income from column labeled "Est. FY11 income".

C. Course-Based Funding (Fees and Differential Designated Tuition)

Incidental fees, Laboratory fees and Differential Designated Tuition are estimated by colleges and departments, and budgeted during the budget process by the department. Revenues will be monitored by the budget office, but it is the responsibility of the college or department to adjust revenue and expense budgets in the event that the full estimated amount will not be realized or if additional revenue is generated. These fees are approved by the Board of Regents and are intended to support specific courses or activities. Incidental Fee Revenue must not be combined with revenue from other cost centers.

Reminder - any salaries paid from incidental fees must also have employee benefits budgeted (see benefits section above).

D. Encumbrances

Encumbrances and their budgets, if available, will be carried forward automatically at the beginning of the fiscal year.

E. Utilities

Budget an amount for utility costs based on anticipated usage and rate estimates that reflect the projected utility cost increases.

F. Auxiliary Administrative Charges

The activities classified as auxiliary are self-supporting. As such, the price of goods and services are set at a level to cover ordinary operating expenses.

Auxiliary activities consume certain services that are provided by the administrative areas. Therefore it is appropriate that auxiliary activities share a proportional amount of the administrative costs. This proportional cost is assessed based on actual expenditures less the cost of goods sold. The charge applies to all auxiliary cost centers and is assessed at the end of each month throughout the year.

The FY12 budget should be based on the rate of 6% (which is flat to the FY11 budget) with an estimate included in the expenditure budgets for all auxiliary cost centers.

Sponsored Programs

Units supported by these funds are allowed to spend as revenue is recorded. Sponsored Project cost centers are budgeted for the life of the award and do not necessarily coincide with the University fiscal year. Operating units are responsible for cost centers within their areas and will ensure spending within estimated revenue.

The Research Division will assist in estimating the expenditures and balances available for FY12.

The University of Houston
Operating Budget for the Fiscal year 2012

Budget Principles

The development of the Fiscal year 2012 (FY12) operating budget will be based on the following budget principles:

Planning Driven Budgeting. The allocation of resources is driven by the priorities and initiatives defined in the planning process.

Realism. Recommended budgets for ongoing operations reflect current levels of actual income and expenditures. Budgets should accurately reflect the pool from which the expenditures are expected to occur. Recommended budgets are developed from base budgets with a check on current performance.

Unbiased Forecasts. Income projections are maximum likelihood estimates. They reflect neither an upward nor downward bias.

Full Disclosure. All revenue sources are budgeted. Prior year balances in support of current year expenditures are budgeted. All sources of funds supporting expenditures are included in budgeted income estimates.

Uses of available funds include all budgeted expenditures and transfers. Expense budgets should be established for those funds that are expected to be used. Conversely, funds cannot be spent or transferred unless they are budgeted.

Balance. Budgeted sources of funds available are equal to budgeted uses of funds.

Prudent Fund Balances. Prudent and reasonable fund balances remain unbudgeted.

Year to Year Comparability. Changes in income and expenditures from one fiscal year to another reflect only substantive changes in funds available and expenditures. Year to year changes in income and expenditures do not result from changes in accounting conventions, organizational changes, creation or consolidation of cost centers, or shifts in income and expenditure classifications.

Compatibility. Budget reporting practices and conventions agree with generally accepted accounting principles. Budgeted income and expenditures are reported to correspond with actual income and expenditures.

Budget Training



UNIVERSITY OF HOUSTON SYSTEM
UNIVERSITY OF HOUSTON

Office of Budget Administration and Analysis

Memorandum

TO: Division/College Administrators
FROM: Margie Hattenbach
DATE: April 1st, 2011
SUBJECT: New Online Training and Training Schedule for Budget Development

BDM data entry and report generating functions are unchanged from FY10 budget development. Therefore training classes are recommended only for those staff that are new to the BDM system operations. Also, there is a new online training available.

A new online training is available. It can be found at the following address:

http://www.uh.edu/finance/Departments/Budget/budget_training.htm

The training manual is also available on-line at the same location. For the training sessions, a list of users attending training with training day preference must be provided to Shabana Mohiuddin at smohiuddin@uh.edu or Linda Watkins at lwatkins@uh.edu. The name, empl ID, responsible departments and security level (view or update) must be included. Excel spreadsheets or word documents will be accepted.

- BDM training will be held at Energy Research Park, Building 2, Lab room 224.

BDM Training Schedule

Thursday, April 28 th 2011	2:00 to 4:00
Friday, April 29 th 2011	9:00 to 11:00

BUDGET OFFICE



- **Training**

Training materials and schedules

- **Forms**

Budget related forms

- **FY2011 Plan & Budget**

Executive Plan & Budget

- **Prior Year Plan & Budget**

Executive Plan & Budget

- **FY 2011 Planning & Budgeting Guide**

Budget related documents and various references

- **Prior Year Planning & Budgeting Guide**

Budget related documents and various references

- **Helpful Hints**

Budget related Hints

- **Contact List**

Budget Office contacts

- **Glossary**

Glossary of commonly used budget terms

- **Printing Tips**

For Go Green UH



BUDGET OFFICE

Home	Training	Forms	FY06 Plan & Budget	FY06 Guide	Helpful Hints	Contacts	Glossary
----------------------	--------------------------	-----------------------	--	----------------------------	-------------------------------	--------------------------	--------------------------

□ Training

Budget Development Module

[Budget Development Module Training](#)

[Frequently Asked Questions](#)

[Budget Module Training Guide](#)

BUDGET

[Budget Journal Training](#)

Last updated on 5/6/11

Comments to: srmohiudoin@central.uh.edu



http://www.uh.edu/finance/Departments/Budget/budget_training.htm

Appendices

University of Houston Mission and Goals

UH Mission

The mission of the University of Houston is to discover and disseminate knowledge through the education of a diverse population of traditional and non-traditional students, and through research, artistic and scholarly endeavors, as it becomes the nation's premier public university in an urban setting. In this role, the University of Houston applies its expertise to the challenges facing the local, state, national, and international communities, and it establishes and nurtures relationships with community organizations, government agencies, public schools, and the private sector to enhance the educational, economic, and cultural vitality of Houston and Texas.

UH Goals

- *National Competitiveness*
UH will become a nationally competitive public research university as measured by the Top American Public Research University analysis and/or Carnegie Foundation for the Advancement of Teaching.
- *Student Success*
UH will have a student profile consistent with a nationally competitive public research university by creating an environment in which student success can be ensured.
- *Community Advancement*
UH will commit to fulfilling regional and state workforce needs while becoming the primary engine of social, economic, and intellectual development.
- *Athletic Competitiveness*
UH will provide a comprehensive educational experience to its students and within this context, it will seek to build the strongest athletic program possible.
- *Local and National Recognition*
UH will be known for its accomplishments locally and nationally.
- *Competitive Resources*
UH will build a resource base that enables it to accomplish its mission and realize its vision.

GLOSSARY OF TERMS FOR THE OPERATING BUDGET

Academic Year	A nine-month period within a fiscal year beginning in September and ending in August and containing the academic sessions held during consecutive Fall and Spring terms.
Appropriation	Operating and capital outlay funds provided to the University of Houston for a fiscal year as appropriated by the State Legislature and signed by the Governor.
Approved Positions	The maximum annualized FTE that can be filled during the fiscal year. Positions are approved through the Legislative Appropriation Request process.
Auxiliary Enterprises	An activity that furnishes a service to students, faculty, or staff and charges a fee directly related to, but not necessarily equal to the cost of the service. They are essential elements in support of the educational program, and conceptually should be regarded as self-supporting.
Budget	Original Budget loaded: The original amount of budget approved during the budget development and allocation process. Original/Base Budget: The original budget plus or minus any permanent transfers or adjustments. Adjustment/Current Budget: The original budget plus or minus any temporary or one-time adjustments.
Budget Development Module	(BDM) Web-based budgeting tool.
Budget Journal	The document used to establish or modify the spending authority in a cost center.
Budget Balance Available (BBA)	The amount of budget that has not been spent or is not committed.
Budget Principles	The philosophy within which the operating and capital budgets are developed.
Budget Process	The activity that encompasses the submission of the biennial Legislative Appropriation Request, the Appropriations Act, the allocations of funds at the University level by the President, and the University Operating Budget. Allocations are determined by the university mission, size, organization, economic factors and Texas law.
Budgeted	Refers to planned level of expenditures, performance, or number of positions for a particular fiscal year.
Biennium	A two-year period. In Texas, as used in fiscal terms, this is the two-year period beginning on September 1 and ending on August 31 of odd-numbered years, for which general state Appropriations are made. A biennium is identified by the two-fiscal years of which it consists, e.g., 2012- 2013 biennium.
Capital Budget	That portion of the budget that is expended for capital construction projects or capital acquisitions.
Capital Equipment	A basic expenditure category represented in the university operating budget, which details the cost of equipment with a life expectancy of more than one year and a cost of \$5,000 or more.
Cost Center Budget	The spending authority established for an activity. The budget does not affect fund equity or cash. A cost center may have a budget balance available (BBA) but be considered in deficit, if actual expenditures exceed realized revenue. A BBA is only meaningful if the revenue budget is fully supported by cash in the general ledger.

Education and General (E&G) Funds	The general activities supported primarily by State Funds to provide services and programs throughout the University, including instructional programs leading to formal degrees, research and public service.
Encumbrance	A financial transaction which reserves funds for a specific purpose.
Estimated	Refers to estimated revenues and expenditures for the current fiscal year. Because these numbers are developed later in the fiscal year, they are considered to be more accurate than budgeted numbers.
Expended	Refers to actual dollars or positions utilized during a completed fiscal year.
Expenditure	A financial transaction which records the cost of operations.
Fiscal Year	A twelve-month period of time beginning September 1 st of one calendar year and ending August 31 st of the next calendar year, and specified by the calendar year in which the fiscal year ends, e.g. September 2011 through August 2012 is fiscal year 2012.
Full Time Equivalent (FTE) Positions	<p>A unit of measure that represents the average number of state personnel working 40 hours a week. A nine-month faculty position (the academic year) is equal to an annual .75 FTE. A University Support Personnel or Administrative and Professional position for twelve months equal is to 1.0 FTE. This includes all faculty positions, full time exempt positions, full time classified positions, and full time hourly and seasonal positions. In addition, it includes those positions which are not full-time regular positions, but are converted to full-time equivalents.</p> <p>Term FTE: The Full Time equivalent which should be reported on the Personnel Action Request (PAR) for the duration of the assignment. It is equal to the standard hours per week divided by forty.</p> <p>Annualized FTE: Equal to the Term FTE times the duration of the assignment. The duration of the Fall or Spring semester is 4.5 months/12 months which equals 0.375. The duration of the three month summer is 3 months/12 months which equals 0.25. The Annualized FTE is the calculated amount which is reported to the State on a quarterly basis.</p>
Full Time Equivalent (FTE) Students	A workload measure based on credit hours generated for each term divided by the appropriate undergraduate or graduate divisor. The divisor (one FTE) is equivalent to 15 credit hours at the undergraduate level or to 12 credit hours at the masters level or special professional level, and to 9 credit hours at the doctoral level.
Fund Equity	The difference between realized revenue and actual expenditures, net of any other fund additions or deductions. The fund equity is not affected by the budget or encumbrances.
General Revenue Funds	State funds appropriated to the University and which are used for operating funds.
Higher Education Assistance Funds	Special appropriations for eligible institutions of higher education to be used (HEAF) for acquisition of land, permanent improvements, construction and equipping of buildings, major repair or rehabilitation of buildings, and the acquisition of capital equipment, library books and library material.
Legislative Appropriation Request (LAR)	The method of submission by each state agency as a biennial budget request to the Legislative Budget Board in the year preceding the convening of the Legislature.
Legislative Budget Board (LBB)	The Texas Legislative Budget Board (LBB) is a permanent, joint committee of the Texas Legislature that develops recommendations for legislative appropriations for all agencies of state government.

Local E &G Funds	Dollars collected from students by the University, remitted to the state treasury and then reallocated to the University for expenditures on Education and General activities. Students' tuition and matriculation fees make up the largest portion of these funds.
Local Funds / Institutional Funds	Funds that belong to entities of the University that are maintained in local banks rather than the State Treasury. Some student fees, Designated Tuition, time deposits, sales and services make up the largest portion of these funds.
Maintenance and Operations	A basic expenditure category represented in the university operating budget, which details the cost of postage, telephones, travel, consumable supplies, and non-capital equipment.
Operating Budget	An expenditure plan developed by a university for each fiscal year. The plan must conform to the annual allocation/appropriation and indicate estimated expenditures for the year by expenditure category.
Personnel Action Request (PAR)	The form used to initiate an employee change usually resulting in a payroll action.
Position Request (PR)	The form used to create a new position or change an existing one, frequently resulting in a budget action.
Project Year	A twelve-month period beginning in the first month a project cost center is established. A project year may not coincide with the university's fiscal year.
Recommended Budget	Refers to dollar amount or number of FTE positions recommended by the institution for the subsequent fiscal year.
Requested	Refers to the dollar amount or number of FTE positions sought by a college or division for use during the subsequent fiscal year.
Revenue	Financial transaction, which records new funds received by the institution.
Salaries & Benefits	A basic expenditure category represented in the university operating budget, which details funds to pay faculty and salaried employees.
Salary Rate	An individual's total annual rate of pay, excluding benefits.
Wages	A basic expenditure category represented in the university organizational budget, which details the cost of temporary employment such as Student Assistants, Graduate Assistants, Consultants, and Faculty Adjuncts.
Workflow	Order in which specific work is performed; in PeopleSoft, a background process that creates a list of administrative actions based on the user's criteria and specifies the procedure associated with each action.

For additional terms and definitions please visit:
<http://www.uh.edu/finance/Glossary.htm>

Full-Time Equivalent Analysis and Definitions

Full-Time Positions

With regard to full-time position, FTE should exceed 1.0 only when the additional responsibilities represent a true overload and not simply a reassignment. Chair responsibilities, for example, do not constitute an overload; neither do additional teaching responsibilities or special awards faculty. FTE overloads will be assigned only when a 1.0 FTE employee accepts additional responsibilities in another division.

Part-Time Positions

In general, all FTE will be assigned according to hours worked per week, with 40 hours equal to 1.0 FTE (the state standard). Below are definitions to be followed regarding temporary faculty positions:

Lecturer (Category I)

Lecturers whose responsibilities are primarily instructional are assigned 0.20 FTE per 3 credit hour course (or eight hours per week).

Lecturer (Category II)

Lecturers whose responsibilities include instruction plus additional responsibilities are assigned 0.25 FTE per 3 credit hour course (or 10 hours per week).

Teaching Assistant/Teaching Fellow/Research Assistant

The standard assignment for these positions is 0.5 FTE (for 20 hours per week). This assignment will not be exceeded. The teaching fellows classification must be used for teachers of record.

Faculty Retiree

In accordance with the state's Voluntary Modification Plan, these positions are assigned 0.49 FTE.

Summer Instruction

Benefits-eligible faculty are assigned 0.5 FTE per 3 credit hour course (or 20 hours per week over a three-month period). Non-benefits-eligible faculty are assigned 0.2 FTE per 3 credit hour course (or eight hours per week over a three-month period).

Summer Research Faculty

Summer research faculty are assigned 1.0 FTE (for 40 hours per week over a three month period).

University of Houston
Standard Work hours per Week for Part-time Faculty

Fall or Spring Semester				
	<u>Semester Credit Hour Value of Courses Taught</u>	<u>Standard Work Hours Per week</u>	<u>Term FTE*</u>	<u>Annualized FTE**</u>
Lecturer (Category I)	1	2.7	0.07	0.03
	2	5.3	0.13	0.05
	3	8.0	0.20	0.08
	4	10.7	0.27	0.10
	5	13.3	0.33	0.13
	6	16.0	0.40	0.15
	7	18.7	0.47	0.18
	8	21.3	0.53	0.20
	9	24.0	0.60	0.23
	10	26.7	0.67	0.25
	11	29.3	0.73	0.28
	12	32.0	0.80	0.30
Lecturer (Category II)	1	3.3	0.08	0.03
	2	6.7	0.17	0.06
	3	10.0	0.25	0.09
	4	13.3	0.33	0.13
	5	16.7	0.42	0.16
	6	20.0	0.50	0.19
	7	23.3	0.58	0.22
	8	26.7	0.67	0.25
	9	30.0	0.75	0.28
	10	33.3	0.83	0.31
	11	39.7	0.92	0.34
	12	40.0	1.00	0.38

Summer (three months)				
Regular 9 Month Faculty	1	6.7	0.17	0.04
	2	13.3	0.33	0.08
	3	20.0	0.50	0.13
	4	26.7	0.67	0.17
	5	33.3	0.83	0.21
	6	40.0	1.00	0.25
Lecturer (Category I)	1	2.7	0.07	0.02
	2	5.3	0.13	0.03
	3	8.0	0.20	0.05
	4	10.7	0.27	0.07
	5	13.3	0.33	0.08
	6	16.0	0.40	0.10
Lecturer (Category II)	1	3.3	0.08	0.02
	2	6.7	0.17	0.04
	3	10.0	0.25	0.06
	4	13.3	0.33	0.08
	5	16.7	0.42	0.10
	6	20.0	0.50	0.13
Summer Research Faculty		40.0	1.00	0.25
		20.0	0.50	0.13

*Term FTE is the Full Time Equivalent which should be reported on the personnel Action Request (PAR) for the duration of the assignment. It is equal to the standard hours per week divided by forty.

**The annualized FTE is equal to the Term FTE times the duration of the assignment. The duration of the Fall or Spring semester is 4.5 months/12 months which equals 0.375. The duration of the three month summer is 3 months/12 months which equals 0.25. The Annualized FTE is the calculated amount which is reported to the State on a quarterly basis.

**University of Houston
Employer Matching Rate for Estimated Benefit Cost**

Fiscal Year 2011 Retirement Plans:

TRS – 6.0% Employer Contribution
ORP – 6.0% Employer Contribution (if hired after 9/1/1995)
ORP – 8.5% Employer Contribution (if hired prior to 9/1/1995)

Fiscal Year 2010 Retirement Plans:

TRS – 6.644% Employer Contribution
ORP – 6.4% Employer Contribution (if hired after 9/1/1995)
ORP – 8.5% Employer Contribution (if hired prior to 9/1/1995)

Calendar Year 2011 Wage Base for FICA:

Social Security Tax – 6.2% up to \$106,800 maximum wage
Medicare Tax – 1.45% no wage maximum

Calendar Year 2010 Wage Base for FICA:

Social Security Tax – 6.2% up to \$106,800 maximum wage
Medicare Tax – 1.45% no wage maximum

Calendar Year 2009 Wage Base for FICA:

Social Security Tax – 6.2% up to \$106,800 maximum wage
Medicare Tax – 1.45% no wage maximum

Health Premium Rates with State Contribution for Full-Time Employees
HealthSelect of Texas – Full Time
FY 2012

Coverage	Premium	State Pays	Member Pays
Member Only	\$438.30	\$438.30	\$0.00
Member & Spouse	\$939.78	\$689.04	\$250.74
Member & Children	\$774.10	\$606.20	\$167.90
Family	\$1275.58	\$856.94	\$418.64

Health Premium Rates with State Contribution for Part-Time Employees
HealthSelect of Texas – Part Time
FY2012

Coverage	Premium	State Pays	Member Pays
Member Only	\$438.30	\$219.15	\$219.15
Member & Spouse	\$939.78	\$344.52	\$595.26
Member & Children	\$774.10	\$303.10	\$471.00
Family	\$1275.58	\$428.47	\$847.11

Health Premium Rates with State Contribution for Full-Time Employees
HealthSelect of Texas – Full Time
FY 2011

Coverage	Premium	State Pays	Member Pays
Member Only	\$411.04	\$411.04	\$0.00
Member & Spouse	\$883.72	\$647.38	\$236.34
Member & Children	\$727.56	\$569.30	\$158.26
Family	\$1200.24	\$805.64	\$394.60

Health Premium Rates with State Contribution for Part-Time Employees
HealthSelect of Texas – Part Time
FY2011

Coverage	Premium	State Pays	Member Pays
Member Only	\$411.04	\$205.52	\$205.52
Member & Spouse	\$883.72	\$323.69	\$560.03
Member & Children	\$727.56	\$284.65	\$442.91
Family	\$1200.24	\$402.82	\$797.42

**University of Houston System
Non-Health Insurance Expenses
Policy Year 2011**

University of Houston		
Accident - Blanket	\$	4,478.87
Aircraft	\$	5,406.00
Attendant Care Liability	\$	2,420.27
Athletics NCAA Sports Policy-Premium, TPA & Admn Fees & Broker Commission		\$592,830.00
Automobile	\$	57,116.20
Broadcasters/Publishers Liability	\$	9,754.00
Crime (Systems)	\$	4,367.53
Directors & Officers/Educators Legal	\$	133,610.44
Fine Arts	\$	810.00
Foreign Package	\$	3,176.00
Leased Premises General Liability	\$	4,797.12
Medical Professional Clinics	\$	78,364.65
Medical Student Professional	\$	12,344.50
Special Events General Liability	\$	1,267.51
Property	\$	2,086,731.58
Willis Fee	\$	78,294.21
University of Houston Central Total	\$	3,075,768.88

University of Houston System		
Automobile	\$	1,866.29
Crime (Systems)	\$	53.55
Directors & Officers/Educators Legal	\$	1,638.05
Property	\$	64,289.62
Willis Fee	\$	1,982.13
University of Houston System Total	\$	69,829.64

**University of Houston
Premium Allocation FY11**

Row Labels	Sum of Premium
Accident - Blanket	\$ 4,478.87
Architecture	300.00
Campus Recreation	1,870.00
Charter School	550.00
Child Learning Center	663.00
Engineering-GRADE	40.00
Engineering-Research Experience Teachers	25.00
Engineering-Research Experience Undergrads	25.00
Engineering-Step Forward Camp / MESET	23.00
Spirit of Houston	982.87
Aircraft	\$ 5,406.00
Civil and Environmental Engineering	5,406.00
Attendant Care Liability	\$ 2,420.27
Health Center	2,420.27
Automobile	\$ 54,463.00
ANIMAL CARE	2,099.00
Athletics	10,881.00
BIOLOGY	219.00
BM-CARP	219.00
Building Maintenance	1,367.00
Campus Recreation	438.00
Chemical Engineering	219.00
COASTAL CENTER	438.00
COLLEGE OF ENGINEERING	438.00
College of Optometry	731.00
College of Pharmacy	423.00
EHRM	438.00
Elect & Comp Engineering	219.00
ENGLISH	438.00
Fire marshal	657.00
Geosciences	876.00
Health Human Perf	219.00
HOTEL & REST. MANAG.	219.00
Information Technology	230.00
KUHF-Radio	438.00
KUHT-TV	423.00
LIBRARY	219.00
PARKING & TRANS.	219.00
PARKING ENFORCEMENT	1,948.00
Plant Admin	230.00
Plant Ops BLDG MAINT	9,270.00
Plant Ops BLDG MAINT Pool	642.00
Plant Ops CUSTODIAL	219.00
Plant Ops GROUNDS	3,690.00
Plant Ops-Utility Svcs	219.00
Police Dept	9,870.00
POSTAL SERVICES	1,299.00
POWER PLANT	2,394.00
PP REC STORES	251.00
PRINTING PLANT	423.00

RES. LIFE & HOUSING		861.00
Theatre		423.00
UNIVERSITY CENTER		438.00
Veterans Affairs		219.00
Automobile - FY10 Audit	\$	2,653.20
Risk Management		2,653.20
Broadcasters/Publishers Liability	\$	9,754.00
Arte Publico		750.00
Daily Cougar		1,800.00
Houstonian Yearbook		110.00
KUHF-Radio		1,800.00
KUHT-TV		5,194.00
Transitions		50.00
UH Magazine		50.00
Crime (Systems)	\$	4,367.53
Risk Management		4,367.53
Directors & Officers/Educators Legal	\$	133,610.44
Risk Management		133,610.44
Fine Arts	\$	810.00
Risk Management		810.00
Foreign Package	\$	3,176.00
Bauer College of Business		2,590.00
Risk Management		586.00
Intercollegiate Sports - UH	\$	592,830.00
Athletics		592,830.00
Leased Premises General Liability	\$	4,797.12
KUHF-Radio		500.00
SBDC 117 Lane Dr		133.29
SBDC 2300 Fanin		3,628.34
SBDC 2302 Fanin		288.73
SBDC 2440 TX Pkwy		246.76
Medical Professional	\$	78,364.65
Athletics		1,100.00
Campus Recreation		1,000.00
CAPS		6,699.65
College of Optometry		42,340.00
Department of Communication Sciences & Disorders		1,050.00
Health Center		25,075.00
Learning Assessment Svcs		1,100.00
Property	\$	2,011,712.42
Risk Management		2,011,712.42
Property - FY10 Audit	\$	75,019.16
Risk Management		75,019.16
Special Events Liability	\$	1,267.51
Risk Management		1,267.51
Student Professional	\$	12,344.50
Athletics		106.00
CAPS		56.70
College of Optometry		6,550.00
College of Pharmacy		3,055.50
Department of Communication Sciences & Disorders		397.50
Dietician		169.60
Psychology		504.00
Social Work		1,505.20
Willis - Annual Fee	\$	78,294.21
Risk Management		78,294.21
Grand Total	\$	3,075,768.88

UNIVERSITY OF HOUSTON SYSTEM ENDOWMENT FUND
Estimated FY11 Endowment Income
For FY2012 Budget Development

	3 Year Average <u>Market Value</u>	Est. FY11 <u>Income</u>	FY10 <u>Actual Income</u>	FY11 - FY10 <u>Income Change</u>
<u>UNIVERSITY OF HOUSTON</u>				
ACADEMIC AFFAIRS	65,767,474	2,473,604	2,466,580	7,024
ADMINISTRATION & FINANCE	54,472	2,179	2,473	(294)
ADVANCEMENT	5,708,543	228,342	280,000	(51,658)
ARCHITECTURE	7,533,462	178,152	144,450	33,702
ATHLETICS	5,152,710	186,611	208,384	(21,773)
BAUER COLLEGE OF BUSINESS	48,832,054	827,908	917,602	(89,694)
COLLEGE OF LIBERAL ARTS & SOCIAL SCIENCES	59,648,204	1,202,218	710,569	491,649
EDUCATION	1,985,628	48,728	34,035	14,693
ENGINEERING	10,890,851	391,758	367,387	24,371
GRADUATE COLLEGE OF SOCIAL WORK	1,835,899	22,577	9,952	12,625
HONORS	6,014,213	167,513	112,407	55,106
HOTEL & RESTAURANT MANAGEMENT	3,677,046	98,540	79,128	19,412
INSTITUTIONAL	50,689,873	17,687	20,067	(2,380)
LAW	1,475,245	59,010	57,454	1,556
LIBRARY	5,645,458	150,933	126,702	24,231
NATURAL SCIENCES & MATHEMATICS	7,905,928	291,580	281,083	10,497
OPTOMETRY	3,109,665	93,456	94,995	(1,539)
PHARMACY	1,423,395	33,161	29,701	3,460
PRESIDENT	1,798,261	57,339	45,545	11,794
RESEARCH	19,120,740	751,799	827,632	(75,833)
STUDENT AFFAIRS	611,999	24,141	26,579	(2,438)
TECHNOLOGY	898,382	16,940	17,180	(240)
UH ENDOWED ALLOCATIONS	529,013	17,497	19,837	(2,340)
TOTAL UNIVERSITY OF HOUSTON	310,308,514	7,341,673	6,879,742	461,931
<u>SYSTEM ADMINISTRATION</u>				
ACADEMIC AFFAIRS	1,104,848	43,777	49,214	(5,437)
INSTITUTIONAL	80,711,831	1,811,530	1,613,455	198,075
UHSA ALLOCATIONS	53,857,385	2,154,295	2,436,055	(281,760)
TOTAL SYSTEM ADMINISTRATION	135,674,063	4,009,602	4,098,724	(89,122)

University of Houston System
Estimated FY11 Endowment Income
For FY2012 Budget Development

	PEOPLE SOFT					3 Year	Est. FY11 Income	FY10 Actual Income	FY11 - FY10 Income Change
	INCOME COST CENTER					Average			
	Sp Type	Fund	Dept	Prog	Proj	Market Value			
UNIVERSITY OF HOUSTON									
UH Tier One Scholarship Quasi Endowment	46934	4028	H0026	H8097	NA	5,708,543	228,342	280,000	(51,658)
SUBTOTAL ADVANCEMENT						5,708,543	228,342	280,000	(51,658)
Farfel, Esther Faculty Awards	17063	4042	H0001	D1463	NA	197,251	7,890	8,956	(1,066)
UH Quasi	18264	2076	H0001	F0757	NA	364,775	-	-	-
Theresa M. Monaco Chair for the Provost	42810	4042	H0001	A8009	NA	699,255	27,970	36,589	(8,619)
Academic Priorities Endowment	48114	2076	H0001	F8166	NA	536,980	21,479	-	21,479
SUBTOTAL PRESIDENT						1,798,261	57,339	45,545	11,794
Athletics Scholarships	12167	4028	H0002	H2386	NA	2,357,674	94,307	107,044	(12,737)
Howard Greenwood Ath Football Schol Endow	16857	4028	H0002	H2384	NA	129,743	5,190	5,891	(701)
Guy Lewis Ath Quasi Basketball Sch Endow	16865	4028	H0002	H2385	NA	79,280	3,171	3,570	(399)
Engel, Mel Athletics	10841	4028	H0002	H2387	NA	183,636	7,345	8,337	(992)
Jack Cannata Jr Ath Schol Endow	16866	4028	H0002	H2388	NA	33,590	1,344	1,507	(163)
Gretta Stalsby Basketball End Schol	16920	4028	H0002	H2382	NA	24,052	962	1,079	(117)
Tilman Fertitta Schol Endow	16893	4028	H0002	H2389	NA	20,176	807	905	(98)
Athletics Scholarship Quasi Endowment	40760	4042	H0002	I2201	NA	377,730	15,109	17,150	(2,041)
Football Scholarship Quasi Endow	13164	4028	H0002	H1048	NA	37,159	1,486	1,667	(181)
Basketball Scholarship Quasi Endow	16612	4028	H0002	H1060	NA	37,325	1,493	1,675	(182)
Greenwood Women's Golf Schol Endow	10849	4028	H0002	H1058	NA	66,032	2,641	2,998	(357)
Men's Athletics Scholarship Endow	16911	4028	H0002	H1050	NA	5,376	215	240	(25)
Women's Athletics Scholarship Endow	16611	4028	H0002	H1056	NA	2,218	89	97	(8)
Tom Wilson Scholarship Endow	17042	4028	H0002	H0420	NA	49,981	1,999	2,269	(270)
Marilyn Hensley Athletic Schol Endow	10811	4028	H0002	H0408	NA	78,784	3,151	3,577	(426)
Andre Ware Scholarship Endow	12162	4028	H0002	H1054	NA	14,100	564	629	(65)
Charles & Mary Ellen Jones Athletic Scholarship Fund	17035	4028	H0002	H0404	NA	95,280	3,811	3,981	(170)
Rauscher, Pierce, Refnes Ath Scholarship End	17039	4028	H0002	H0414	NA	12,877	515	578	(63)
Spain, Ken Scholarship End	16794	4028	H0002	H1052	NA	41,029	1,641	1,841	(200)
The Howie and Jamie Lorch Scholarship Endowment	17037	4028	H0002	H0410	NA	28,463	1,139	1,277	(138)
Murray Stinson Scholarship Endow	17040	4028	H0002	H0416	NA	44,633	1,785	2,003	(218)
Smith, Bo & Josanna	16906	4028	H0002	H2390	NA	77,927	3,117	3,538	(421)
Taxi Squad	17041	4028	H0002	H0418	NA	49,601	1,984	2,252	(268)
Butler, George	17043	4028	H0002	H0422	NA	66,302	2,652	3,010	(358)
Jerry & Marge Crum Football Scholarship End	16907	4028	H0002	H2391	NA	14,420	577	647	(70)
James Lyle Scholarship Endow	16908	4028	H0002	H2392	NA	29,319	1,173	1,315	(142)
Lilie Family-Baseball Schol Endow	16909	4028	H0002	H2393	NA	385,850	15,434	17,519	(2,085)
Bill Yeoman Athletic Scholarship Endow	16910	4028	H0002	H2394	NA	10,344	414	456	(42)
Disney, Brian & Lisa Track Endow	37541	4028	H0002	H2828	NA	9,795	-	-	-
Woody Williams End Sch	39576	4028	H0002	H3502	NA	254,614	-	-	-
Marcia & J.W. Burns End Sch	41187	4028	H0002	H2928	NA	64,207	-	-	-
Mike and Teresa Baker Volleyball Sch End	43170	4028	H0002	H8020	NA	12,967	-	-	-
Carolyn Ashcroft Scholarship Endowment	43426	4028	H0002	H8036	NA	47,523	-	-	-
Boyaki Family Endowment	43735	4028	H0002	H8051	NA	33,556	1,342	779	563
William Douglas Allums Athletic Endowment	44788	4042	H0002	D8061	NA	247,456	9,898	9,548	350
Howard W. Greenwood Sch Quasi End in Athletics	44696	4028	H0002	H8093	NA	31,397	1,256	1,005	251
Ashcroft, Carolyn Athletics ⁽¹⁾	21061	6045	H0650	H9075	NA	98,292	-	-	-
SUBTOTAL ATHLETICS						5,152,710	186,611	208,384	(21,773)
M. D. Anderson Foundation	16965	4042	H0005	A1899	NA	4,743,200	189,728	211,473	(21,745)
Hugh Roy & Lillie Cranz Cullen Dist Chairs Prof	16959	4046	H0005	A1893	NA	20,907,942	836,318	949,270	(112,952)
UH Faculty Excell. ⁽¹⁾	40827	4042	H0005	D3102	NA	2,133	85	90	(5)
Moores Presidential Priorities	18407	2076	H0005	F0759	NA	19,956,147	798,246	906,000	(107,754)
John S. Dunn Chair End	41910	4042	H0005	A9969	NA	703,553	28,142	-	28,142

(1) Income Return to Principal.
(2) Income cost center not yet available.

**University of Houston System
Estimated FY11 Endowment Income
For FY2012 Budget Development**

	PEOPLE SOFT					3 Year			
	INCOME COST CENTER					Average	Est. FY11	FY10	FY11 - FY10
	Sp Type	Fund	Dept	Prog	Proj	Market Value	Income	Actual Income	Income Change
York, Meredith & Miriam	43277	4028	H0007	H1735	NA	44,161	1,766	1,981	(215)
Adair, Wendy Scholarship	43279	4028	H0007	H9748	NA	10,264	-	-	-
Wells Fargo Scholars Community	44424	4028	H0007	H2835	NA	9,151	-	-	-
Faculty Senate Enhancement Endowment	44730	4042	H0008	D8033	NA	16,008	640	591	49
Delphian Scholarships	43974	4028	H0213	H9170	NA	382,940	15,318	17,386	(2,068)
Nelson Esther Marion	17142	4028	H0213	H0568	NA	23,193	928	1,041	(113)
Lee, Albert	16375	4028	H0213	H1639	NA	128,222	5,129	5,822	(693)
Stadtler, Robert & Esther	12090	4028	H0213	H1657	NA	105,280	4,211	4,780	(569)
Rizk, Fred Quasi	43446	4028	H0213	H9046	NA	11,401	456	511	(55)
Univ. Stud. Loan	40887	4028	H0213	H2912	NA	263,079	10,523	11,939	(1,416)
Student Govt Scholarship	43445	4028	H0213	H3538	NA	43,306	1,732	1,942	(210)
Franklin, Thomas & Richard Quasi	16372	4028	H0213	H1631	NA	3,571,250	142,850	162,143	(19,293)
Zimmer, Bill & Helen	16388	4028	H0213	H1719	NA	19,219	769	862	(93)
Jinnah, M. A.	40828	4028	H0213	H0810	NA	61,343	2,454	2,785	(331)
Breedlove, rote	40829	4028	H0213	H0976	NA	17,144	686	723	(37)
Computing Center	40830	4028	H0213	H0978	NA	1,377	55	61	(6)
Foley, Kathryn Quasi	16821	4028	H0213	H0996	NA	18,175	727	811	(84)
Fitzgerald, Ruth	16468	4028	H0213	H1540	NA	61,665	2,467	2,800	(333)
Edmonds Foundation -UH	16771	4028	H0213	H0782	NA	2,777,121	111,085	126,070	(14,985)
UH Student Excell. ⁽¹⁾	10847	4028	H0213	H1006	NA	3,726	149	158	(9)
Perkins/Christie	16362	4028	H0213	H1608	NA	124,088	-	-	-
Dow Employees Schol	16363	4028	H0213	H1610	NA	769	31	35	(4)
Bohner, Roswell	Multiple Allocations (See Attached)					28,918	1,157	1,298	(141)
Perkins, Robert B	16364	4028	H0213	H1612	NA	181,416	7,257	-	7,257
Eichhorn, Patricia	16571	4028	H0213	H1550	NA	23,511	940	1,037	(97)
Monsignor George	13059	4028	H0213	H1552	NA	13,399	536	591	(55)
Alexander, Eric Philip	16519	4028	H0213	H1737	NA	91,845	3,674	4,032	(358)
Ryan, Julie Scholarship	16466	4028	H0213	H1534	NA	224,954	8,998	-	8,998
Helen Krause	16842	4028	H0213	H0510	NA	51,087	2,043	-	2,043
Herman Krause	14029	4028	H0213	H0512	NA	51,087	2,043	-	2,043
The Women's Club	12959	4028	H0213	H0500	NA	29,778	-	-	-
Elvira Dell Krause	16843	4028	H0213	H0516	NA	1,012,438	-	-	-
Rudy & Eliz Woerner Quasi	40831	4028	H0213	H0494	NA	33,422	-	-	-
Schiffick Endow	12176	4028	H0213	H0514	NA	25,848	-	-	-
Mendenhall Fdn Pres. End	38542	4028	H0213	H1134	NA	24,079	-	-	-
Jesse H & M Gibbs Jones	38537	4028	H0213	H1514	NA	25,471	-	-	-
Bexar Cty Pharm Assoc Pres	38539	4028	H0213	H1462	NA	26,689	-	-	-
Phillip G Hoffman Presidntl	38538	4028	H0213	H1741	NA	24,836	-	-	-
James H Pickering Presdntl	38535	4028	H0213	H1743	NA	24,836	-	-	-
Celso & Martina Cuellar Pres.	38540	4028	H0213	H1466	NA	27,679	-	-	-
Petty Presidential Schol	38543	4028	H0213	H0398	NA	25,303	-	-	-
Lienhart Engines of Ingenuity	40890	4028	H0213	H1492	NA	155,393	-	-	-
Peck, Lora Presidential	38544	4028	H0213	H0396	NA	26,511	-	-	-
Gupta, Anant Presidential	38545	4028	H0213	H0392	NA	23,830	-	-	-
Houston Office Leasing Ass.	40891	4028	H0213	H1498	NA	16,729	-	-	-
Architectural Alumni Pres.	38546	4028	H0213	H0394	NA	24,729	-	-	-
Wilson Presidential	38541	4028	H0213	H1144	NA	38,504	-	-	-
Armistead Presidential	38534	4028	H0213	H2403	NA	29,408	-	-	-
Likhari Presidential	38536	4028	H0213	H2417	NA	26,372	-	-	-
Sarah & Geoffrey Scholarship	40892	4028	H0213	H2430	NA	3,531	-	-	-
Keeland, Burdette PES	38532	4028	H0213	H2427	NA	26,385	-	-	-
Cater, John & Margot	40893	4028	H0213	H2428	NA	89,791	-	-	-
Turner, Michelle & Dale Pres	38533	4028	H0213	H2462	NA	26,177	-	-	-
Shearne, Major Charles Pres	38528	4028	H0213	H2481	NA	29,653	-	-	-
Shearne, Major Charles Pres	38530	4028	H0213	H2483	NA	29,653	-	-	-
Shearne, Major Charles Pres	38529	4028	H0213	H2482	NA	29,653	-	-	-
Smith, June D.	40832	4028	H0213	H2461	NA	16,315	-	-	-
Mason, Lynn & Marcel	38531	4028	H0213	H2496	NA	28,589	-	-	-
Astronaut/Space Studies	40833	4028	H0213	H2513	NA	34,929	-	-	-

(1) Income Return to Principal.
(2) Income cost center not yet available.

University of Houston System
Estimated FY11 Endowment Income
For FY2012 Budget Development

	PEOPLE SOFT					3 Year			
	INCOME COST CENTER					Average	Est. FY11	FY10	FY11 - FY10
	Sp Type	Fund	Dept	Prog	Proj	Market Value	Income	Actual Income	Income Change
Smith, Arthur K.	40834	4042	H0213	D3103	NA	10,892	-	-	-
Strickland, Jerald	38526	4028	H0213	H2519	NA	37,197	-	-	-
Lerner, Jane & Ronald	38525	4028	H0213	H2518	NA	26,761	-	-	-
Kohler, Dave	40835	4042	H0213	E2201	NA	13,733	-	-	-
Passarelli Hurtado, Diana Jo	38524	4028	H0213	H2531	NA	27,545	-	-	-
Bell, Kate Pres.	38527	4028	H0213	H2517	NA	27,314	-	-	-
Souчек, William Czech Cultural	38523	4028	H0213	H2529	NA	90,725	-	-	-
Hart, David	27128	4028	H0213	H2553	NA	411,686	-	-	-
Butler, Dr. John	38515	4028	H0213	H9605	NA	35,589	-	-	-
Cemo Foundation PES CLASS	38520	4028	H0213	H2577	NA	28,637	-	-	-
Cemo Foundation, PES Business	38521	4028	H0213	H2574	NA	28,637	-	-	-
Cemo Foundation, PES Business	38522	4028	H0213	H2575	NA	28,637	-	-	-
Maresh, Thelma PES	38519	4028	H0213	H2576	NA	33,308	-	-	-
Dallas/Ft Worth Alumni PES	38517	4028	H0213	H2598	NA	30,714	1,229	-	1,229
Allen, James Quasi	31725	4028	H0213	H2623	NA	122,977	4,919	-	4,919
San Antonio Alumni PES	38516	4028	H0213	H2599	NA	32,721	1,309	-	1,309
San Antonio Alumni PES	38518	4028	H0213	H2600	NA	31,737	1,269	-	1,269
Yelderman, Pauline PES	38514	4028	H0213	H9716	NA	33,667	-	-	-
Hamilton, Elmer Schol.	33532	4028	H0213	H9719	NA	10,810	-	-	-
Watts, Karele Maresh PES	38512	4028	H0213	H9721	NA	29,349	-	-	-
Hopping, Dr. Desiree PES	38513	4028	H0213	H9735	NA	29,494	-	-	-
Fndn for Educ & Research in Visn.	38511	4028	H0213	H9736	NA	29,494	-	-	-
Smith, Elva PES	38510	4028	H0213	H9743	NA	28,567	-	-	-
Maresh, Harlan Renan	38507	4028	H0213	H9747	NA	28,988	-	-	-
Agrawal,Brij & Sunita PES	38509	4028	H0213	H9751	NA	29,854	1,194	-	1,194
Hamilton, Allie Scholarship	36870	4028	H0213	H9818	NA	9,772	-	-	-
Kripp, Robert PES Engr	38508	4028	H0213	H9822	NA	29,399	-	-	-
Franklin & Virginia Law Sch End	40836	4028	H0213	H3501	NA	9,103	-	-	-
Canteen, Bus Svrs, Quasi End	41070	4028	H0213	H3492	NA	20,429	817	-	817
Barnes & Noble Sch Quasi End	41108	4028	H0213	H2921	NA	23,703	-	-	-
Lillie E. Spies-GTF Removing Educ Barriers Sch End	43736	4028	H0213	H9918	NA	36,926	-	-	-
Gerald McElvy Scholarship Endowment	42053	4028	H0213	H9929	NA	57,108	-	-	-
Bill & Sue McMahan Rem Ed Bar	43736	4028	H0213	H9945	NA	16,649	-	-	-
GTF Ajay & Laxmi Aggarwal End	41620	4028	H0213	H9952	NA	24,655	-	-	-
GTF Brij & Sunita Agrawal End	41621	4028	H0213	H9953	NA	24,655	-	-	-
Jerri Lee Pledger Scholarship Endowment	41818	4028	H0213	H9961	NA	15,883	635	-	635
Carole Heegenbarth Scholarship Endowment	43287	4028	H0213	H8021	NA	16,060	642	621	21
Inspiring Excellence Sch End Sponsored by Shell	44025	4028	H0213	H8058	NA	35,798	1,432	1,381	51
UH Alumni Assn TierOne Sch Endowment	44513	4028	H0213	H8089	NA	58,708	2,348	592	1,756
Dr. Kaye E. Stripling UH Tier One Sch Endowment	45171	4028	H0213	H8105	NA	107,609	4,304	-	4,304
Cynthia & George Mitchell Fdn UH TierOne Sch End	45286	4028	H0213	H8113	NA	107,578	4,303	-	4,303
Gaynelle Brock & Prem Bhushan Dewan Gadihoke UH TierOne End ⁽¹⁾	45415	4028	H0213	H8115	NA	4,602	184	-	184
Rose & William B. Calhoun UH TierOne Sch End ⁽¹⁾	45416	4028	H0213	H8116	NA	9,675	387	-	387
Schissler Fdn UH TierOne Scholarship Endowment ⁽¹⁾	45508	4028	H0213	H8117	NA	13,457	538	-	538
Roger & Victoria Berry UH TierOne Scholarship Endowment ⁽¹⁾	47031	4028	H0213	H8120	NA	11,274	451	-	451
Truman & Becky Arnold UH TierOne Scholarship Endowment ⁽¹⁾	45499	4028	H0213	H8121	NA	5,383	215	-	215
Mr & Mrs Robert Maxwell Jr UH TierOne Schol Endow	45593	4028	H0213	H8122	NA	64,486	2,579	-	2,579
Sophie Pledger UH TierOne Schol Endow ⁽¹⁾	45667	4028	H0213	H8123	NA	18,392	736	-	736
Carlo & Kristen Pippolo UH TierOne Scholarship Endowment ⁽¹⁾	47034	4028	H0213	H8124	NA	10,734	429	-	429
Thompson Family UH TierOne Schol Endow	45834	4028	H0213	H8126	NA	53,701	2,148	-	2,148
Albert & Ethel Herzstein UH TierOne Schol Endow	45835	4028	H0213	H8127	NA	107,435	4,297	-	4,297
H E B UH TierOne Schol Endow	45937	4028	H0213	H8133	NA	107,544	4,302	-	4,302
Barbara A Britt UH TierOne Scholarship Endowment ⁽¹⁾	45938	4028	H0213	H8134	NA	2,689	108	-	108
Marvin & Joan Kaplan UH TierOne Scholarship Endow ⁽¹⁾	45939	4028	H0213	H8135	NA	10,754	430	-	430
Pamela & Patrick Newman UH TierOne Schol Endow ⁽¹⁾	46024	4028	H0213	H8137	NA	5,377	215	-	215
The Manny Family UH TierOne Scholarship Endow	46025	4028	H0213	H8140	NA	53,734	2,149	-	2,149
The Burch Family UH TierOne Scholarship Endowment ⁽¹⁾	46192	4028	H0213	H8143	NA	5,914	237	-	237
Gerald W. McElvy UH TierOne Scholarship Endowment ⁽¹⁾	46347	4028	H0213	H8147	NA	13,163	527	-	527
Rhonda J. Sweeney UH TierOne Scholarship Endowment ⁽¹⁾	46346	4028	H0213	H8148	NA	1,340	54	-	54

(1) Income Return to Principal.
(2) Income cost center not yet available.

University of Houston System
Estimated FY11 Endowment Income
For FY2012 Budget Development

	PEOPLE SOFT					3 Year			
	INCOME COST CENTER					Average	Est. FY11	FY10	FY11 - FY10
	Sp Type	Fund	Dept	Prog	Proj	Market Value	Income	Actual Income	Income Change
Ed & Sue Clark UH TierOne Scholarship Endowment ⁽¹⁾	47030	4028	H0213	H8149	NA	10,723	429	-	429
Nancy & Carter Hixon UH TierOne Scholarship Endowment ⁽¹⁾	46603	4028	H0213	H8150	NA	1,072	43	-	43
Professor Mamie Wong Moy UH TierOne Scholarship Endowment	46604	4028	H0213	H8151	NA	90,299	3,612	-	3,612
Babbara S. & Glen C. Farber UH TierOne Sch Endowment ⁽¹⁾	48079	4028	H0213	H8152	NA	2,689	108	-	108
Clay Hoster UH TierOne Scholarship Endowment ⁽¹⁾	46779	4028	H0213	H8156	NA	8,605	344	-	344
A UH TierOne Scholarship Endowment ⁽¹⁾	46894	4028	H0213	H8162	NA	4,306,166	172,247	-	172,247
Lana A. Culpepper UH TierOne Scholarship Endowment	47084	4028	H0213	H8167	NA	536,980	21,479	-	21,479
Alkek	40838	4042	H0436	C2201	NA	42,973	-	-	-
Cullen Graduate Scholarships	33982	4028	H0442	H1669	NA	1,049,903	41,996	47,668	(5,672)
Clemenger, Florence Quasi	38639	4028	H0442	H1504	NA	98,736	-	-	-
Huang, Diane PES	38640	4028	H0442	H9623	NA	55,018	2,201	-	2,201
Smith, Arthur & June Quasi	38641	4028	H0442	H9689	NA	58,799	-	-	-
Lietzow, Sharon Ley PEF	38642	4028	H0442	H9745	NA	62,621	2,505	-	2,505
Lietzow, Robert F. PEF	38643	4028	H0442	H9746	NA	45,803	-	-	-
Symons, Virginia Thompson PEF Eng	38638	4028	H0442	H9814	NA	47,408	-	-	-
Lourdes M. & Nicanora C. Cuellar Presidential End ⁽¹⁾	46666	4028	H0442	H8103	NA	6,999	280	-	280
Carey C. Shuart Presidential Endowed Fellowship	46667	4028	H0442	H8107	NA	53,783	2,151	-	2,151
June L. Chin Presidential Endowed Fellowship ⁽¹⁾	46665	4028	H0442	H8118	NA	9,655	386	-	386
Nicky R. & Lisa K. Holdeman Presidential End Fellowship - OPT ⁽¹⁾	48094	4028	H0442	H8154	NA	5,378	215	-	215
KUHT Quasi Endow Reserve Fund ⁽¹⁾	35704	6065	H0650	F9093	NA	330,585	-	-	-
UH Facilities Excel. ⁽¹⁾	20794	6061	H0650	G9001	NA	1,084	43	46	(3)
Rockwell Ctr for Ethics & Ldrshp ⁽¹⁾	35950	6061	H0650	D9784	NA	877	35	40	(5)
SUBTOTAL ACADEMIC AFFAIRS						65,767,474	2,473,604	2,466,580	7,024
Detering, Carl & William	16525	4028	H0024	H1703	NA	45,843	1,834	2,081	(247)
SICSA/Japan Shipbuilding	40756	4042	H0024	D3074	NA	1,073,168	42,927	-	42,927
Japan Shipbuilding	14120	4042	H0024	A1334	NA	3,084,403	123,376	137,516	(14,140)
Barnstone Lecture Series - Architecture	17629	4042	H0024	A1332	NA	47,951	1,918	2,177	(259)
CRSS/Aaron Farfel	10848	4028	H0024	H1038	NA	45,338	1,814	2,034	(220)
Okumura, Roy	16899	4028	H0024	H1034	NA	14,305	572	642	(70)
Architecture Alumni	17445	4042	H0024	D1161	NA	142,766	5,711	-	5,711
Hines, Gerald	40757	4042	H0024	D1147	NA	2,678,602	-	-	-
Herman, Ralph S. Scholarship	29174	4028	H0024	H2588	NA	61,171	-	-	-
Johnson Philip Quasi	40758	4042	H0024	A2004	NA	150,652	-	-	-
Bell, Larry Space Architecture	40759	4042	H0024	A2204	NA	117,551	-	-	-
Spacehab End Sch-Chet Lee	38980	4028	H0024	H2858	NA	9,285	-	-	-
David D. Red Scholarship Endowment	41095	4042	H0024	H2925	NA	16,456	-	-	-
Powers Brown Architecture Scholarship Endow	41827	4028	H0024	H9963	NA	16,573	-	-	-
Sharon Sanders Hoover Mem End	42293	4028	H0024	H3522	NA	8,287	-	-	-
FKP Architects/Charles Sundin Sch	42784	4028	H0024	H3674	NA	21,113	-	-	-
SUBTOTAL ARCHITECTURE						7,533,462	178,152	144,450	33,702
Wells Fargo	37168	4028	H0041	H0790	NA	129,575	5,183	5,883	(700)
Duncan Professorship	16961	4042	H0041	A1895	NA	351,535	14,061	15,961	(1,900)
Daniels, Howard	37165	4028	H0041	H0504	NA	311,800	12,472	13,293	(821)
Laufman, Bill	16381	4028	H0041	H1653	NA	60,209	2,408	2,843	(435)
Gunter, Thomas Robert	14145	4028	H0041	H1671	NA	16,778	671	753	(82)
Leroy & Lucille Melcher End				Multiple Allocations (See Attached)		6,574,016	262,961	298,476	(35,515)
Hughes, Ruth	16914	4028	H0041	H0592	NA	332,468	13,299	14,660	(1,361)
Arthur Andersen Professorship	17673	4042	H0041	A1420	NA	683,830	27,353	30,483	(3,130)
Hurley, Marvin Professorship	17676	4042	H0041	A1424	NA	385,613	15,425	17,508	(2,083)
Houston Cash Mgmt Assoc.	17026	4028	H0041	H0872	NA	46,191	1,848	1,875	(27)
KPMG/Peat Marwick	36262	4042	H0041	A1446	NA	423,424	16,937	19,202	(2,265)
Ross, Billy D	37166	4028	H0041	H0880	NA	122,715	4,909	5,572	(663)
Sloan, Everett	40761	4042	H0041	D3075	NA	17,803	712	777	(65)
Conn Appliances	42237	4042	H0041	A2245	NA	177,090	7,084	8,039	(955)
Federation of Houston Women	37169	4028	H0041	H0950	NA	40,752	1,630	1,797	(167)

(1) Income Return to Principal.
(2) Income cost center not yet available.

**University of Houston System
Estimated FY11 Endowment Income
For FY2012 Budget Development**

	PEOPLE SOFT					3 Year			
	INCOME COST CENTER					Average	Est. FY11	FY10	FY11 - FY10
	Sp Type	Fund	Dept	Prog	Proj	Market Value	Income	Actual Income	Income Change
GPA Improvement	16789	4028	H0041	H0916	NA	23,253	930	1,037	(107)
EMBA Teaching Excell	10785	4042	H0041	A1438	NA	32,271	1,291	1,448	(157)
Delta Sigma Pi	12177	4028	H0041	H0546	NA	17,448	698	760	(62)
Texas Exec Women	37167	4028	H0041	H0850	NA	64,713	2,589	2,853	(264)
Furman, Larry Scholarship	16599	4028	H0041	H0982	NA	23,963	959	1,055	(96)
Hispanic Bus Student Assoc	16795	4028	H0041	H0932	NA	22,404	896	-	896
Payne, Wayne & Kathryn	13076	4042	H0041	D1175	NA	99,593	3,984	-	3,984
Gordon, Harry	16614	4028	H0041	H1064	NA	248,491	9,940	11,282	(1,342)
Houst Fdn Cont Ed	16761	4028	H0041	H1020	NA	60,624	2,425	2,752	(327)
Bank of America	16787	4028	H0041	H1022	NA	82,555	3,302	3,748	(446)
The Minute Maid Company Foundation	16616	4028	H0041	H1068	NA	176,213	7,049	8,001	(952)
Jones, Jesse Quasi	16615	4028	H0041	H1066	NA	5,988,916	239,557	271,911	(32,354)
Ken Reese Dean's Chair-Business	17568	4042	H0041	A1432	NA	535,735	21,429	24,265	(2,836)
Palmer, Marc	16684	4028	H0041	H1082	NA	71,922	2,877	3,265	(388)
El Paso Corporation Scholarship Endowment	16685	4028	H0041	H1084	NA	71,518	2,861	3,247	(386)
Lilie Family-Entrepreneur	13912	4042	H0041	A1434	NA	63,338	2,534	2,793	(259)
Eugene H Hughes Sch	16686	4028	H0041	H1090	NA	412,060	-	-	-
Robert White Accountancy	33840	4028	H0041	H1094	NA	51,191	-	-	-
JP Morgan Chase Professorship	17226	4042	H0041	A1932	NA	227,135	9,085	10,312	(1,227)
Bauer, C.T.	40762	4051	H0041	A2205	NA	24,726,210	-	-	-
Harcrow, Stephen	37164	4028	H0041	H1096	NA	11,562	-	-	-
Smallman, William R.	26917	4028	H0041	H2537	NA	8,222	-	-	-
Robinson, Jerome	40763	4042	H0041	D3076	NA	97,024	-	-	-
Cook-Price, Elaine	27237	4028	H0041	H2556	NA	23,621	945	952	(7)
Rodriguez, Robert	27303	4028	H0041	H2560	NA	10,342	414	-	414
Bauer Family Fndn.	28120	4028	H0041	H9619	NA	237,032	-	-	-
Quinones, Charles John Schol. ⁽¹⁾	32285	4028	H0041	H2627	NA	4,405	176	-	176
Williamson, Kim & Bruce Schol.	32801	4028	H0041	H9696	NA	87,739	-	-	-
McMahen, Charles Chair	38461	4042	H0041	A9731	NA	948,558	-	-	-
Kuriger, Richard Charles	34991	4028	H0041	H9752	NA	9,677	-	-	-
McNabb, John	35120	4028	H0041	H9756	NA	44,295	-	-	-
Countryman, Mark Scholarship	35184	4028	H0041	H9757	NA	10,057	-	-	-
Palmer, Wilma Scholarship	35804	4028	H0041	H9771	NA	48,974	-	-	-
Sachnowitz, Larry J Prof Mrkting	38462	4042	H0041	A9773	NA	124,741	-	-	-
Jack & Anne Wallace Scholarship	35970	4042	H0041	D9785	NA	18,967	-	-	-
UHY Mann Frankfort & Lipp	37217	4028	H0041	H9787	NA	39,226	1,569	-	1,569
Duke Energy Scholarship	37218	4028	H0041	H9792	NA	38,113	-	-	-
Monk, Earl Scholarship	36868	4028	H0041	H9816	NA	38,042	-	-	-
Loomis, Carol & Scott Scholarship	36869	4028	H0041	H9817	NA	19,385	-	-	-
Blessan Samuel Memorial Sch Endow	37862	4028	H0041	H9829	NA	10,801	-	-	-
Charles T Bauer Schol Endow	37967	4028	H0041	H2843	NA	231,827	-	-	-
C T Bauer Part Time MBA Sch End	38254	4028	H0041	H3484	NA	159,161	-	-	-
C T Bauer Full Time Undergrad	39069	4028	H0041	H2864	NA	132,635	-	-	-
Richard & Dawn Rawson Sch End	38982	4028	H0041	H2857	NA	16,330	653	523	130
Leon B. Stinson Memorial Sch End	38435	4028	H0041	H3489	NA	53,914	-	-	-
Dennis Allen Mem Sch End	39314	4028	H0041	H3495	NA	16,137	-	-	-
Dwight E. Davis Sch End	38997	4028	H0041	H2860	NA	8,955	-	-	-
Joe Martin Scholarship End	38998	4028	H0041	H2861	NA	15,436	-	-	-
John D & Susan K Thompson End	40185	4028	H0041	H2886	NA	35,042	-	-	-
Jack & Debbie Moore Excel End	40764	4042	H0041	D3077	NA	43,890	-	-	-
Mark G. Papa Leadership Excellence Fund End	39586	4042	H0041	D3688	NA	158,497	-	-	-
Mack Rogers, Jr. Insurance & Risk Management	39773	4028	H0041	H2872	NA	28,823	-	-	-
Marvin & Joan Kaplan Sch End	39880	4028	H0041	H2876	NA	78,572	-	-	-
John & Sharon Stubblefield End	39958	4028	H0041	H2878	NA	42,298	-	-	-
Link Staffing Services Sch End	39966	4028	H0041	H2879	NA	21,107	-	-	-
Willis & Patsy Johnson Sch End	40564	4028	H0041	H2893	NA	9,331	-	-	-
Rims Houston Chapter Sch End	40868	4028	H0041	H2909	NA	31,691	-	-	-
Houston Marketing Prof Sch End	42049	4028	H0041	H9956	NA	8,209	-	-	-
Hyman Sofer Memorial Scholarship Endowment	41817	4028	H0041	H3515	NA	21,987	-	-	-

(1) Income Return to Principal.
(2) Income cost center not yet available.

**University of Houston System
Estimated FY11 Endowment Income
For FY2012 Budget Development**

	PEOPLE SOFT					3 Year			
	INCOME COST CENTER					Average	Est. FY11	FY10	FY11 - FY10
	Sp Type	Fund	Dept	Prog	Proj	Market Value	Income	Actual Income	Income Change
Debra and Mark Gregg Scholarship Endowment	42844	4028	H0041	H3679	NA	45,496	-	-	-
Andy & Barbara Gessner "Inspiring Excellence"	42996	4028	H0041	H3688	NA	24,390	-	-	-
Henry and Tanya Matula Endowment	42775	4042	H0041	D3786	NA	6,978	279	-	279
Cameron "Inspiring Excellence" Sch End	43112	4028	H0041	H3695	NA	24,390	-	-	-
Williams Group Inspiring Excellence Sch End ⁽¹⁾	43408	4028	H0041	H3697	NA	4,203	168	-	168
Robin French Family Scholarship Endowment	43407	4028	H0041	H3696	NA	13,962	558	-	558
William Douglas Allums C.T. Bauer Business End	43880	4042	H0041	D3950	NA	247,456	9,898	9,548	350
Keys A. & Joan F. Curry Endowed Excellence Fund	43937	4042	H0041	D3922	NA	17,325	693	461	232
Bauer Alumni Assn Scholarship Endowment ⁽¹⁾	44486	4028	H0041	H3728	NA	7,917	317	297	20
Dr. Edward A. Blair Scholarship Endowment	46751	4028	H0041	H8096	NA	31,492	1,260	1,220	40
Earl Monk UH TierOne Scholarship Endowment - Business ⁽¹⁾	46749	4028	H0041	H8099	NA	20,165	807	-	807
Techtrans International Scholarship Endowment	46750	4028	H0041	H8139	NA	26,886	1,075	-	1,075
Sai Hoon Lim Scholarship Endowment ⁽¹⁾	46968	4028	H0041	H8165	NA	6,444	258	-	258
Grinaker, Robert Professorship	17667	4042	H0046	A1406	NA	336,921	13,477	15,254	(1,777)
Voelkel, Stanley	40525	4042	H0046	A3518	NA	19,533	781	876	(95)
Price Waterhouse Professorship	17436	4042	H0046	A1428	NA	271,315	10,853	12,300	(1,447)
Elkins Professorship	16964	4042	H0047	A1897	NA	870,263	34,811	39,512	(4,701)
Cemo, Michael Professorship	34051	4042	H0049	A9727	NA	124,253	4,970	-	4,970
Baker Hughes Professorship	17669	4042	H0050	A1412	NA	996,162	39,846	45,427	(5,581)
Halliburton	17569	4042	H0054	C0439	NA	118,529	4,741	5,381	(640)
SUBTOTAL BAUER COLLEGE OF BUSINESS						48,832,054	827,908	917,602	(89,694)
Benbrook/Foerster	40766	4042	H0058	D3078	NA	17,707	708	794	(86)
Oberholtzer, EE & Myrtle	10774	4028	H0058	H1635	NA	109,705	4,388	4,567	(179)
Lawson, French W.	40767	4042	H0058	B1243	NA	14,225	569	638	(69)
Harper, Mabel Jewel	40768	4028	H0058	H2900	NA	16,062	642	709	(67)
Durham, Mylie & Charles	17530	4028	H0058	H0361	NA	50,418	2,017	2,289	(272)
Weinstein, Joshua Scholarship	40769	4028	H0058	H2901	NA	51,275	2,051	2,328	(277)
Lechenger, Barbara	40770	4042	H0058	B1842	NA	98,944	3,958	4,492	(534)
Faculty Growth & Dev Quasi	40771	4042	H0058	D3079	NA	36,392	1,456	1,633	(177)
Administaff	16701	4028	H0058	H1106	NA	14,176	567	636	(69)
Marshall, Faith Gladstone	16702	4028	H0058	H1108	NA	16,575	663	740	(77)
Lilie Family-Early Childhood	10787	4042	H0058	B1245	NA	97,563	3,903	4,302	(399)
Strahan, Richard	14164	4028	H0058	H1112	NA	13,450	538	593	(55)
Larry & Phyllis Hughes	40772	4028	H0058	H1114	NA	17,428	-	-	-
Sterr, Margie Scholarship	16705	4028	H0058	H1118	NA	10,175	-	-	-
College Of Educ Alumni Endow	12160	4028	H0058	H1120	NA	22,147	886	-	886
Irene Smith Buckner Schol	16877	4028	H0058	H1126	NA	27,417	-	-	-
Hooker, Dr. Richard Endow	16704	4028	H0058	H1116	NA	10,251	-	-	-
Elizabeth Rockwell Education Chair	40308	4042	H0058	D3709	NA	462,265	-	-	-
Foerster, Cecile	16782	4028	H0058	H1136	NA	11,070	-	-	-
Chiappetta, Dr. Eugene	14165	4028	H0058	H1132	NA	11,624	-	-	-
Pascoe, Kathleen	16784	4028	H0058	H1140	NA	9,648	-	-	-
Houston, Robert	40773	4028	H0058	H1124	NA	16,993	-	-	-
Asian American Studies	16778	4028	H0058	H1128	NA	50,467	-	-	-
Chambers, Velma	10331	4028	H0058	H2484	NA	13,347	-	-	-
Warner, Dr. Allen R.	16785	4028	H0058	H1142	NA	14,863	-	-	-
Wheless, Leslie And Kim	10319	4028	H0058	H2478	NA	18,665	-	-	-
Andrews Foundation Scholarship	34772	4028	H0058	H2425	NA	16,400	-	-	-
Lopez, Joe Scholarship	30486	4028	H0058	H9655	NA	11,194	448	494	(46)
Mountain, Joe & Lee Scholar.	34992	4028	H0058	H9678	NA	66,732	2,669	-	2,669
Hollingsworth, Marcile Schol.	32837	4028	H0058	H2631	NA	54,424	2,177	1,711	466
June Smith Early Childhood Development	32904	4042	H0058	A9699	NA	10,072	403	-	403
Lilie, Glenn & Judith Dean's Leadership	32902	4042	H0058	D9700	NA	201,449	8,058	-	8,058
Hernandez, Dr. Mary Lou	42039	4028	H0058	H3004	NA	9,762	-	-	-
Gore-Laird & Liberman Scholarship	33326	4028	H0058	H9714	NA	9,666	-	-	-
George LeRoy & Myrajane Ereckson Hall	41102	4028	H0058	H2882	NA	8,241	-	-	-
Loleet Usener Eckel Sch Endow	41181	4028	H0058	H2927	NA	8,026	-	-	-

(1) Income Return to Principal.
(2) Income cost center not yet available.

**University of Houston System
Estimated FY11 Endowment Income
For FY2012 Budget Development**

	PEOPLE SOFT					3 Year			
	INCOME COST CENTER					Average	Est. FY11	FY10	FY11 - FY10
	Sp Type	Fund	Dept	Prog	Proj	Market Value	Income	Actual Income	Income Change
Susan & Tom Williams Graduate Sch End	38908	4028	H0058	H2856	NA	6,295	-	-	-
Paul R. & Nancy G. Borneman Scholarship End	42523	4028	H0058	H3534	NA	8,488	-	-	-
John D. & Susan K. Thompson Family Sch End	44480	4028	H0058	H3727	NA	19,964	799	770	29
Wilford Weber Memorial Scholarship End	43983	4028	H0058	H3710	NA	11,134	445	419	26
College of Education Alumni Assn Sch End #2 ⁽¹⁾	44033	4028	H0058	H3714	NA	3,223	129	30	99
Hawkins Family Endowed Scholarship ⁽¹⁾	44222	4028	H0058	H3723	NA	797	32	30	2
Weltzien Endowed Scholarship	44481	4028	H0058	H3726	NA	7,932	317	306	11
Helen & Melvin Wimpelberg Memorial Sch Endowment	46641	4028	H0058	H8146	NA	30,862	1,234	-	1,234
Dr. Walter Cubberly Memorial Fellowship Endowment ⁽¹⁾	46631	4028	H0058	H8153	NA	20,071	803	-	803
Crouch, Pauline Moss	16870	4028	H0061	H0852	NA	19,299	772	860	(88)
Croft, John	17525	4028	H0061	H0357	NA	19,145	766	859	(93)
Asian Amer Immigrant	40701	4028	H0061	H2611	NA	19,982	799	897	(98)
Antje & Harry Gee Jr Endowment in the Asian American Studies Ctr	45947	4042	H0061	D8136	NA	64,526	2,581	-	2,581
Capobianco, Rudolph	40774	4028	H0062	H0739	NA	18,023	721	809	(88)
Wiley, Mary	40775	4042	H0062	D3080	NA	16,581	663	744	(81)
Butler, Mary McCullough	16890	4028	H0062	H0918	NA	38,427	1,537	1,723	(186)
Marcile Hollingsworth Science Educ.	42060	4042	H0062	A3516	NA	10,982	439	-	439
Phyllis & Mudge Miller Endow	40302	4028	H0062	H2846	NA	18,047	-	-	-
Kagen, Norman	40776	4028	H0064	H1110	NA	8,292	-	-	-
Pelton, Barry C.	40777	4028	H0065	H0355	NA	14,744	590	662	(72)
SUBTOTAL EDUCATION						1,985,628	48,728	34,035	14,693
Chevron Scholarship Endowment	12092	4028	H0066	H1693	NA	344,980	13,799	15,663	(1,864)
O'Leary, Mr. & Mrs. John	40778	4042	H0066	D3081	NA	324,686	12,987	14,742	(1,755)
Cullen Eng Schol	16808	4028	H0066	H0690	NA	2,876,165	115,047	130,585	(15,538)
Baldwin, R.W.	16526	4028	H0066	H1705	NA	252,327	10,093	11,456	(1,363)
Engineering Schl. Quasi	16924	4028	H0066	H0723	NA	56,771	2,271	2,578	(307)
Meier, Wilber & Judy	13901	4028	H0066	H0369	NA	10,353	414	465	(51)
McInnis, Bayliss ⁽¹⁾	16819	4028	H0066	H0988	NA	5,921	237	251	(14)
American Petroleum Inst	16747	4028	H0066	H0936	NA	306,672	12,267	13,215	(948)
Porter, Leonard	16633	4028	H0066	H1148	NA	39,598	1,584	1,777	(193)
Kent, Herb ⁽¹⁾	16634	4028	H0066	H1150	NA	5,663	227	240	(13)
Power, Douglas & Jeannette	16791	4028	H0066	H1156	NA	51,013	-	-	-
Gillingham, W. J.	40779	4042	H0066	D3082	NA	667,517	26,701	30,307	(3,606)
Dukler, Abraham	10855	4028	H0066	H1180	NA	4,128	165	185	(20)
McNeese, Bill & Gail	16698	4028	H0066	H1184	NA	25,386	1,015	1,118	(103)
Klotz Associates	16717	4028	H0066	H1192	NA	60,287	2,411	-	2,411
Thomas & Vera Stufflebeen	16716	4028	H0066	H1190	NA	123,680	4,947	5,454	(507)
Cobb/Fendley	16719	4028	H0066	H1196	NA	73,154	2,926	-	2,926
Todd B. Colvin Schol End	16723	4028	H0066	H1206	NA	18,475	-	-	-
Elizabeth Rockwell Engineering Chair	16729	4042	H0066	D1633	NA	493,769	-	-	-
Dewan Scholarship	16726	4028	H0066	H1212	NA	23,378	-	-	-
Holder, Cecil & Louise	10532	4028	H0066	H2497	NA	185,100	7,404	-	7,404
Kirkpatrick, C. V. Engineering	27235	4028	H0066	H2557	NA	21,565	863	-	863
Lohec, Ronald & Bertha	29006	4028	H0066	H2586	NA	81,609	3,264	-	3,264
Gas Processors Scholarship	40780	4028	H0066	H2579	NA	31,746	-	-	-
Cobb/Fendley Excellence	30435	4042	H0066	D9660	NA	46,450	1,858	-	1,858
Dunn, John Professorship	31843	4042	H0066	A9663	NA	632,023	25,281	27,867	(2,586)
Baker Hughes Engineering Schol.	32918	4028	H0066	H9697	NA	50,361	2,014	-	2,014
Engineering Alumni Assoc.	33204	4042	H0066	D9711	NA	23,076	-	-	-
William C. Miller Endowed Chair of Engineering	41918	4042	H0066	A2242	NA	441,623	17,665	-	17,665
Margie Nell Eaves Seiver Scholarship End	42145	4028	H0066	H3007	NA	20,081	803	-	803
Belgacem Lies Baghdadi Memorial Scholarship	44492	4028	H0066	H3729	NA	9,682	-	-	-
Simon Yee On Chow Endowed Scholarship	43840	4028	H0066	H3705	NA	84,821	3,393	-	3,393
Society of Iranian American Women for Education	43430	4028	H0066	H3699	NA	13,852	554	-	554
Dr. Victor A. Zaloom Scholarship Endowment	43431	4028	H0066	H3700	NA	13,852	554	-	554
Cullen Eng. Prof.	40783	4042	H0067	A2206	NA	1,035,157	41,406	46,999	(5,593)
Dow Professorship	17474	4042	H0067	A1510	NA	415,804	16,632	18,878	(2,246)

(1) Income Return to Principal.
(2) Income cost center not yet available.

University of Houston System
Estimated FY11 Endowment Income
For FY2012 Budget Development

	PEOPLE SOFT					3 Year			
	INCOME COST CENTER					Average	Est. FY11	FY10	FY11 - FY10
	Sp Type	Fund	Dept	Prog	Proj	Market Value	Income	Actual Income	Income Change
Henley, Ernest & Barbara Prof	36227	4042	H0067	A9794	NA	101,605	4,064	3,657	407
Frank L. Worley, Jr. Ugr Sch End	42227	4028	H0067	H3519	NA	83,662	-	-	-
Dept of Chem & Biomolecular Engr Founders' Sch	43598	4028	H0067	H3704	NA	13,571	543	-	543
Spe-Gulf Coast Section College End Professorship	46670	4042	H0067	A8098	NA	269,337	10,773	-	10,773
Anderson, Pat	16595	4028	H0068	H0972	NA	22,712	908	1,019	(111)
Cobb Fendley Schol	16683	4028	H0068	H1178	NA	69,408	2,776	3,148	(372)
Structural Consulting/Monteith	16725	4028	H0068	H1210	NA	7,271	-	-	-
Malloy, Ambrose Fellowship	12153	4028	H0068	H2429	NA	48,916	-	-	-
Hsu, Thomas Structural Res	40782	4042	H0068	B1843	NA	56,252	2,250	-	2,250
Gonzalez, Jesse Schol Endow Engr	35890	4028	H0068	H9778	NA	23,714	-	-	-
Symons, Virginia Thompson Envir Eng	40784	4042	H0068	D9815	NA	127,137	-	-	-
Thomas & Laura HSU Profess End	40785	4042	H0068	A2207	NA	122,493	-	-	-
Charles J Tamborello Mem Sch Endow	38132	4028	H0068	H3483	NA	32,235	-	-	-
Herbert & Faye Lum Schol End	39050	4028	H0068	H2863	NA	27,245	-	-	-
Michael W Oneill Mem Sch	38153	4028	H0068	H2849	NA	34,198	-	-	-
American Chapter of the Amer Concrete Inst Endowed Schol	46937	4028	H0068	H8155	NA	26,914	1,077	-	1,077
Barr, Betty Scholarship	16679	4028	H0070	H1170	NA	14,427	577	636	(59)
Medh, Urvish ⁽¹⁾	16680	4028	H0070	H1172	NA	9,526	381	378	3
Dr Wallace Lee Anderson Schol Endow in Electrical Engr ⁽¹⁾	45819	4028	H0070	H3782	NA	1,939	78	-	78
Omron Fdn, Inc. Endowed Sch in Electrical Engineering	46348	4028	H0070	H8145	NA	26,808	1,072	-	1,072
Agrawal, Durga & Sushila	17007	4028	H0072	H2468	NA	172,513	-	-	-
Hall, George & MyraJane Ind Engr	36289	4028	H0072	H9796	NA	10,170	-	-	-
Hari & Anjali Agrawal Faculty Fellowship ⁽¹⁾	41741	4042	H0072	D3187	NA	28,205	1,128	-	1,128
Brij & Sunita Agrawal Fac Fellow Industrial Engr ⁽¹⁾	43892	4042	H0072	D3919	NA	33,734	1,349	769	580
Bill D. Cook Scholar	40786	4028	H0073	H1198	NA	32,084	-	-	-
Bill D Cook Faculty Scholars Endow	16721	4028	H0073	H1200	NA	465,936	36,000	36,000	-
Hall, George	16727	4028	H0073	H1214	NA	21,128	-	-	-
Padula, Frank Scholarship	33008	4028	H0073	H2634	NA	51,126	-	-	-
Manmohan & Marie Kalsi End	39665	4042	H0073	D9897	NA	85,864	-	-	-
SUBTOTAL ENGINEERING						10,890,851	391,758	367,387	24,371
Honors Program Quasi	40791	4042	H0078	D3084	NA	162,164	6,487	7,363	(876)
Dyer, Everett	16568	4028	H0078	H1542	NA	66,851	2,674	3,035	(361)
Cooper Industries	14152	4028	H0078	H1548	NA	73,677	2,947	3,306	(359)
Temple-Honors Coll	16572	4028	H0078	H1554	NA	354,655	14,186	16,102	(1,916)
Coastal Securities - Honors	40792	4028	H0078	H1558	NA	10,950	438	483	(45)
Hearst, William Randolph	40793	4028	H0078	H1560	NA	331,645	13,266	-	13,266
Cizik, Jane Morin Chair	36164	4042	H0078	D3559	NA	532,572	21,303	-	21,303
Honors Fellows Program Endowment	42863	4042	H0078	D3796	NA	699,352	27,974	-	27,974
Carolyn Grant Fay	12210	4042	H0078	D1467	NA	1,536,428	61,457	67,747	(6,290)
Monsanto End/Honor	16656	4028	H0078	H1566	NA	12,698	508	568	(60)
McMillian/Gerstacker Schol	16664	4028	H0078	H1518	NA	13,927	557	-	557
Honors Undergrad Research	40794	4042	H0078	D3085	NA	83,886	3,355	3,698	(343)
Honors Study Abroad Endow	40795	4042	H0078	D3086	NA	83,886	3,355	3,698	(343)
Jane Blaffer Owen Schol End	16659	4028	H0078	H1574	NA	42,338	-	-	-
Becky & Truman Arnold Sch	16450	4028	H0078	H1576	NA	13,417	-	-	-
JD Field & Co Inc Schol End	16665	4028	H0078	H1520	NA	8,260	-	-	-
CL Knapp/Chilton Mgmt Sch	16457	4028	H0078	H1522	NA	24,675	-	-	-
Honors Class of 1989 Schol	16458	4028	H0078	H1524	NA	22,453	-	-	-
El Paso Corporation Scholarship Endowment	16459	4028	H0078	H1526	NA	12,127	-	-	-
Luchsinger, Amy & John	16662	4028	H0078	H2418	NA	16,420	-	-	-
Blanton, Jack	16460	4028	H0078	H2419	NA	8,485	-	-	-
Lay Presidential	16451	4028	H0078	H2438	NA	25,583	-	-	-
Goodman Scholarship	16641	4028	H0078	H2433	NA	8,124	-	-	-
Cizik, Jane & Robert	16642	4028	H0078	H2434	NA	96,744	-	-	-
Smith, Wilhelmina R	16643	4028	H0078	H2435	NA	83,053	-	-	-
Jesse H & Mary Gibbs Jones Endow	42862	4042	H0078	A3530	NA	954,302	-	-	-
Bettencourt, Sara	26251	4028	H0078	H2521	NA	10,400	-	-	-

(1) Income Return to Principal.
(2) Income cost center not yet available.

University of Houston System
Estimated FY11 Endowment Income
For FY2012 Budget Development

	PEOPLE SOFT					3 Year			
	INCOME COST CENTER					Average	Est. FY11	FY10	FY11 - FY10
	Sp Type	Fund	Dept	Prog	Proj	Market Value	Income	Actual Income	Income Change
Bettencourt, Dorothy	26250	4028	H0078	H2520	NA	17,026	-	-	-
Seaver	26497	4028	H0078	H2527	NA	8,650	-	-	-
Andrews, Kurth Scholarship Honors	37336	4028	H0078	H2824	NA	37,297	-	-	-
Nancy O'Connor Abendshein Prof	43313	4042	H0078	A9846	NA	108,560	-	-	-
Steven Ronald Martin Sch End	39027	4028	H0078	H3494	NA	9,232	-	-	-
Ross Lence Sch Quasi End	40242	4028	H0078	H3505	NA	70,988	-	-	-
Michelle & Ed Noack Sch End	40082	4028	H0078	H2885	NA	12,599	504	-	504
Bhattacharya Family Sch End ⁽¹⁾	41219	4028	H0078	H2930	NA	7,140	-	-	-
Univ Community Sch End Honors	41218	4028	H0078	H2929	NA	10,152	-	-	-
Jeff Dodd & Susan Ohsfeldt Sch	41550	4028	H0078	H3509	NA	32,969	-	-	-
Vince & Louise Foster Faculty Award Endow	43916	4042	H0078	D9990	NA	21,371	-	-	-
Fred & Mabel R. Parks Fdn End	42520	4028	H0078	H9994	NA	42,889	1,716	1,224	492
Ross M. Lence Teacher in Residency Program End	42518	4042	H0078	D8003	NA	161,209	-	-	-
Steven Hecht & Deborah Brochstein Sch End	42855	4028	H0078	H8007	NA	15,420	-	-	-
Dr. Ted L. Estess Honors Scholarship Endowment	43118	4028	H0078	H8025	NA	66,542	2,662	1,651	1,011
Honors Student Govt Board End ⁽¹⁾	43914	4028	H0078	H8040	NA	3,322	133	-	133
Matthew B. & Tamara Steele Faculty Award End	43913	4042	H0078	D8055	NA	10,803	432	307	125
Ted L. Estess Faculty Award Endowment	43912	4042	H0078	D8066	NA	19,924	797	769	28
Moya Family Scholarship Endowment in Honors	43915	4028	H0078	H8067	NA	59,772	2,391	2,306	85
Olga & Gerardo Balboa Scholarship Endowment ⁽¹⁾	44412	4028	H0078	H3725	NA	9,273	371	150	221
SUBTOTAL HONORS						6,014,213	167,513	112,407	55,106
Forehand, Larry	16589	4028	H0080	H1352	NA	123,257	4,930	5,530	(600)
Dobson, Harmon	10862	4028	H0080	H1354	NA	29,112	1,164	1,284	(120)
Rappole - Sheridan	16590	4028	H0080	H1356	NA	45,681	-	-	-
Wilson, Herbert O.	16474	4028	H0080	H1358	NA	41,219	1,649	1,849	(200)
Pappas, Gregory James	16500	4028	H0080	H1384	NA	65,814	2,633	2,902	(269)
Pappas Restaurant	16501	4028	H0080	H1386	NA	65,814	2,633	2,902	(269)
Bristol Hotel	16502	4028	H0080	H1388	NA	19,183	-	-	-
Look, Mary	16523	4028	H0081	H1699	NA	153,019	6,121	6,945	(824)
Tomac, Peter J. for HRM	16841	4028	H0081	H0508	NA	15,802	632	705	(73)
Meat Science	35119	4042	H0081	A2097	NA	10,828	433	486	(53)
Garbett, Rosemary	16524	4028	H0081	H1701	NA	96,920	3,877	4,400	(523)
HRM Facility Improv. Quasi	40796	4042	H0081	G2201	NA	444,146	-	-	-
Assoc. Bldg, Services/Parker	16513	4028	H0081	H1727	NA	31,811	1,272	1,420	(148)
Wyllys K & Becky Bliss Schol Endowment	16512	4028	H0081	H1725	NA	222,969	8,919	8,078	841
Wyatt, Earle	16984	4028	H0081	H0576	NA	30,292	1,212	1,359	(147)
Par Excellence Scholarship	16861	4028	H0081	H0836	NA	32,444	1,298	1,473	(175)
Davis, Edward C.	16988	4028	H0081	H0460	NA	57,570	2,303	2,614	(311)
Rolston, Leonard	13167	4028	H0081	H0888	NA	38,775	1,551	1,740	(189)
Sutherland, J.P.	16885	4028	H0081	H0896	NA	24,254	970	1,088	(118)
Prichard, C Victor	16820	4028	H0081	H0992	NA	15,634	625	697	(72)
McNeill, Charles	14169	4028	H0081	H0990	NA	3,615	145	162	(17)
Hardy, Scott	16855	4028	H0081	H0544	NA	25,111	1,004	1,120	(116)
HRM Dean's Scholarship	16628	4028	H0081	H0802	NA	135,105	5,404	6,134	(730)
Greenaway, Donald	40797	4042	H0081	D3087	NA	56,105	2,244	2,547	(303)
Hospitality Industry Diversity Inst.	40798	4042	H0081	D1239	NA	44,932	-	-	-
Les Dames Escoffier	16584	4028	H0081	H1340	NA	145,506	5,820	6,402	(582)
Fischer, Jo	16585	4028	H0081	H1344	NA	7,340	294	329	(35)
Lattin, Gerald	16586	4028	H0081	H1346	NA	16,749	670	748	(78)
Houston Restaurant Assoc.	11997	4028	H0081	H1342	NA	165,950	6,638	7,179	(541)
Waskey, Ted	16587	4028	H0081	H1348	NA	17,458	698	780	(82)
Bombaywala, Ghulam	16588	4028	H0081	H1350	NA	20,293	812	910	(98)
Food & Beverage Mgrs	16475	4028	H0081	H1360	NA	107,172	-	-	-
Brinker International	16498	4028	H0081	H1376	NA	87,902	3,516	-	3,516
Gourmet Night	16488	4028	H0081	H1370	NA	12,759	510	572	(62)
Nat Hart	16487	4028	H0081	H1368	NA	26,718	1,069	-	1,069
Four Seasons Hotel	14155	4028	H0081	H1378	NA	124,230	-	-	-

(1) Income Return to Principal.
(2) Income cost center not yet available.

**University of Houston System
Estimated FY11 Endowment Income
For FY2012 Budget Development**

	PEOPLE SOFT					3 Year			
	INCOME COST CENTER					Average	Est. FY11	FY10	FY11 - FY10
	Sp Type	Fund	Dept	Prog	Proj	Market Value	Income	Actual Income	Income Change
HRM Houston Livestock	16476	4028	H0081	H1362	NA	131,364	5,255	-	5,255
Natl Assoc Of Catering	10764	4028	H0081	H1380	NA	33,261	1,330	1,467	(137)
Fred Parks Wine Cellar	35118	4042	H0081	D2818	NA	155,788	6,232	-	6,232
Greater Houston Hotel	40799	4042	H0081	D3088	NA	110,514	-	-	-
Int'L Assoc Hosp. Acct	16496	4028	H0081	H1372	NA	47,814	-	-	-
Tony Vallone End	40800	4042	H0081	D3089	NA	82,018	-	-	-
Ray A. Kroc Schol Endow	16581	4028	H0081	H1338	NA	20,176	807	-	807
HRM Global Recog. Quasi	35117	4042	H0081	D2817	NA	34,266	-	-	-
Glazer's Endowment	16580	4028	H0081	H1336	NA	17,240	-	-	-
Fitsimmons, Charles	16582	4028	H0081	H2431	NA	20,531	-	-	-
Texas Hotel & Motel	16583	4028	H0081	H2432	NA	120,335	4,813	5,306	(493)
Carlson Nelson Scholarship	28122	4028	H0081	H9620	NA	205,636	8,225	-	8,225
Simmons, Lonnie Scholarship	28945	4028	H0081	H2585	NA	20,805	832	-	832
HFTP, Raymond Ellis	33788	4042	H0081	D9726	NA	49,741	-	-	-
Look, Garret Dawson "Sonny"	34415	4042	H0081	D9733	NA	21,521	-	-	-
Massad Family Scholarship	34596	4028	H0081	H9742	NA	12,556	-	-	-
Mason, Lynn & Marcel HRM	35966	4042	H0081	D9783	NA	18,713	-	-	-
Lonnie Simmons Sch Quasi End	28945	4028	H0081	H2585	NA	13,276	-	-	-
SUBTOTAL HOTEL & RESTAURANT MANAGEMENT						3,677,046	98,540	79,128	19,412
Wortham Chair	17369	4042	H0082	A1608	NA	1,920,396	76,816	87,191	(10,375)
Lepow, Dr. Ronald	35442	4028	H0082	H2424	NA	22,749	910	1,021	(111)
Sanders, Don A.	35433	4028	H0082	H1478	NA	88,646	3,546	3,909	(363)
Danberg, Debra	35435	4028	H0082	H1482	NA	53,399	2,136	2,424	(288)
Henderson, Sen. Don Quasi	35450	4042	H0082	D1365	NA	189,336	7,573	8,495	(922)
Robert Eckles Schol End	35441	4028	H0082	H1486	NA	44,097	-	-	-
McGovern Lectureship Endow	40801	4042	H0082	A2209	NA	128,175	-	-	-
Stern, David O. in LASS	35778	4042	H0082	D9768	NA	9,880	-	-	-
Louise Woestemeyer Sch End	40235	4028	H0082	H9861	NA	8,677	-	-	-
Class Quasi Scholarship Endowment	39153	4028	H0082	H9862	NA	17,175	-	-	-
William Cunningham End - Hawes	41220	4028	H0082	H9932	NA	8,062	-	-	-
William Cunningham End - Young	41221	4028	H0082	H9933	NA	8,062	-	-	-
Houston Area Corps of Cadets/MOAA	42316	4028	H0082	H9981	NA	10,623	-	-	-
Cheryl M. Carlucci Scholarship Endowment	43418	4028	H0082	H8042	NA	18,023	721	687	34
Earl Ray Monk UH TierOne Scholarship Endowment - Class ⁽¹⁾	48171	4028	H0082	H8100	NA	20,165	807	-	807
Flaxman Art Scholarship	16510	4028	H0083	H1687	NA	208,215	8,329	9,453	(1,124)
Blaffer, Sarah Cambell Schol	16382	4028	H0083	H1655	NA	13,920	557	625	(68)
Guenther, Peter Quasi	40210	4028	H0083	H0745	NA	96,134	3,845	4,358	(513)
Blain, LaRuth	16602	4028	H0083	H1272	NA	74,930	2,997	3,402	(405)
Choate, Gary & Palmer, Marc	16607	4028	H0083	H1284	NA	30,571	1,223	1,348	(125)
Judith Morris Art	16715	4028	H0083	H1294	NA	53,476	2,139	-	2,139
McClellan, LaVerne	10333	4042	H0083	D1652	NA	10,903	-	-	-
Berry, Frank Jr Quasi Int Design	36923	4042	H0083	D9795	NA	12,729	-	-	-
Laura E Swails Schol End	39509	4028	H0083	H3496	NA	10,762	-	-	-
Joan Hohlt & Roger Wich Endowment	40042	4028	H0083	H2881	NA	18,524	-	-	-
The Val Link Endowed Scholarship in Art	43139	4028	H0083	H8011	NA	9,289	-	-	-
Speech Scholarship Quasi	16377	4028	H0084	H1643	NA	21,129	845	948	(103)
Underwood, Walter Quasi	16378	4028	H0084	H1645	NA	3,038	122	136	(14)
Scardino, Dickie	16379	4028	H0084	H1647	NA	6,910	276	309	(33)
Flaherty, Pat	13056	4028	H0084	H1651	NA	6,090	244	273	(29)
Winius/Brandon/Blumberg	16470	4028	H0084	H1709	NA	21,768	871	977	(106)
Gallagher, Jack	17145	4028	H0084	H0574	NA	74,563	2,983	3,385	(402)
MCI Telecommunications	40802	4042	H0084	D3090	NA	31,113	1,245	1,396	(151)
Battin, Tom	16596	4028	H0084	H0974	NA	31,251	1,250	1,359	(109)
Gehbauer, John & Kathryn ⁽¹⁾	13062	4028	H0084	H1224	NA	53,452	2,138	2,298	(160)
Calderon, Elizabeth	10858	4028	H0084	H1258	NA	24,243	970	1,069	(99)
Frede, Ralph	16565	4028	H0084	H1260	NA	16,795	672	754	(82)
Georgeanna Stanton	40212	4028	H0084	H1264	NA	9,005	-	-	-

(1) Income Return to Principal.
(2) Income cost center not yet available.

University of Houston System
Estimated FY11 Endowment Income
For FY2012 Budget Development

	PEOPLE SOFT					3 Year			
	INCOME COST CENTER					Average	Est. FY11	FY10	FY11 - FY10
	Sp Type	Fund	Dept	Prog	Proj	Market Value	Income	Actual Income	Income Change
Uray, Richard	40213	4028	H0084	H1332	NA	78,084	-	-	-
William Hawes Family Scholarship Endowment ⁽¹⁾	42319	4028	H0084	H9955	NA	39,763	-	-	-
William W. & Georgia Bryan Sch End	42057	4028	H0084	H9967	NA	208,133	-	-	-
Conrad N Hilton Schol in Communication	42134	4028	H0084	H9988	NA	83,251	-	-	-
Jim Nantz Endowed Scholarship	42476	4028	H0084	H9998	NA	42,438	-	-	-
West Endowment Scholarship	42857	4028	H0084	H8016	NA	21,106	-	-	-
Delphian-Children's Theatre	17138	4042	H0085	C0530	NA	79,238	3,170	3,598	(428)
Delphian-Shakespeare Festival	17137	4042	H0085	C0528	NA	79,238	3,170	3,598	(428)
Wilson, Trey	40215	4028	H0085	H0920	NA	59,858	2,394	2,717	(323)
Pickett, Cecil	40214	4028	H0085	H1016	NA	45,352	1,814	2,059	(245)
Adamo, Joseph ⁽¹⁾	16673	4028	H0085	H1236	NA	8,568	343	363	(20)
Bullard Schol Endow	10859	4028	H0085	H1290	NA	13,516	-	-	-
Joanna Friesen Endow Sch	16742	4028	H0085	H1320	NA	10,462	-	-	-
Dorff, Linda Scholarship	27065	4028	H0085	H2546	NA	8,805	-	-	-
Wilson & Jeter Endowment ⁽¹⁾	35882	4042	H0085	D9710	NA	6,346	254	-	254
Bartkowiak, Matthew	40803	4028	H0085	H9754	NA	38,430	-	-	-
Bill & Ann Stokes	38134	4042	H0085	C0679	NA	45,518	-	-	-
John S & Elena M Zaccaria Scholarship Endow	42795	4028	H0085	H3675	NA	9,104	-	-	-
English Scholarships Quasi	16373	4028	H0086	H1633	NA	25,094	1,004	1,126	(122)
Houstoun Professorship	12310	4042	H0086	A1614	NA	734,742	29,390	33,359	(3,969)
Day, Martin & Betty	16762	4028	H0086	H0864	NA	19,005	760	853	(93)
Morris Gentile Mem.	16744	4028	H0086	H1222	NA	33,265	1,331	1,492	(161)
Morgan, Jeanette	40804	4028	H0086	H2903	NA	15,380	615	690	(75)
Smith, Beulah Lavange Quasi	17298	4042	H0086	D1285	NA	44,668	1,787	-	1,787
African Amer Studies, Chair in Creative Writing	40805	4042	H0086	A2210	NA	472,070	-	-	-
Cullen Fndn Chair Creative Writing	40806	4042	H0086	A2211	NA	1,260,909	-	-	-
McDavid College Professorship	35736	4042	H0086	A9765	NA	105,159	-	-	-
Lawrence, Bryan Excellence Quasi	40807	4042	H0086	D3091	NA	32,940	-	-	-
Richard L. Nelson Excellence Writing Award End	44808	4028	H0086	H9991	NA	9,985	399	-	399
John A. Beck	16604	4028	H0087	H1278	NA	362,724	14,509	15,994	(1,485)
Adams, Martin	16745	4028	H0087	H1326	NA	9,696	-	-	-
Lebel, Patty & Jesse Loran	16987	4028	H0087	H2459	NA	94,070	-	-	-
UH Communications Disorders	10332	4028	H0087	H2485	NA	13,512	-	-	-
Arnold, Genevieve Com Disord	40217	4028	H0087	H9647	NA	44,082	1,763	-	1,763
Torres, Rosemary Segovia Scholarship	40808	4028	H0087	H2904	NA	10,699	-	-	-
Thelma Burnett Maresh	40216	4042	H0087	A9691	NA	26,129	1,045	-	1,045
Donna R. Fox End for Faculty Support	40693	4042	H0087	D3070	NA	8,250	-	-	-
UH Comm Sciences & Disorders ⁽¹⁾	42317	4028	H0087	H9979	NA	1,716	-	-	-
Howard Family "Inspiring Excellence" End	43978	4028	H0087	H8070	NA	19,525	781	401	380
Douthitt, Helen Scholarship	16509	4028	H0089	H1685	NA	22,887	915	1,027	(112)
Latin Amer Schol Quasi	16384	4028	H0089	H1663	NA	23,751	950	1,066	(116)
Miller, Murray Scholarships	16387	4028	H0089	H1717	NA	618,877	24,755	28,098	(3,343)
History	40809	4042	H0089	D3092	NA	26,717	1,069	1,199	(130)
African American Studies End Chair	10609	5022	H0089	A0001	G004545	1,445,335	-	-	-
Siegel, Stanley TX History	36235	4028	H0089	H9755	NA	19,848	-	-	-
Lack Music	16514	4028	H0090	H1691	NA	57,144	2,286	2,594	(308)
Katims, Milton	14146	4028	H0090	H1723	NA	57,599	2,304	2,615	(311)
Claridge, Hester	40218	4028	H0090	H0566	NA	31,168	1,247	1,398	(151)
Burr, Ruth	16516	4028	H0090	H1731	NA	54,662	2,186	2,482	(296)
Hirsh, Albert	17140	4028	H0090	H0560	NA	28,517	1,141	1,277	(136)
School Of Music Quasi	12174	4028	H0090	H0743	NA	151,007	6,040	6,856	(816)
Bishop, Charles & Dorothy	40811	4028	H0090	H2905	NA	124,173	4,967	5,638	(671)
Van Horn, Sue	16871	4028	H0090	H0854	NA	54,288	2,172	2,435	(263)
Lack, Jean Preston	40220	4028	H0090	H0882	NA	21,235	849	947	(98)
Cooper, Sara	40221	4028	H0090	H0914	NA	19,196	768	861	(93)
Moore's Professorship	17353	4042	H0090	A1642	NA	715,344	28,614	31,542	(2,928)
Moore's Fellowships	13896	4028	H0090	H0373	NA	1,997,787	79,911	90,704	(10,793)
Chertok, Nancy	16636	4028	H0090	H0814	NA	37,052	1,482	1,627	(145)
Nikolaidi, Elena	14019	4028	H0090	H1014	NA	15,276	611	685	(74)

(1) Income Return to Principal.
(2) Income cost center not yet available.

**University of Houston System
Estimated FY11 Endowment Income
For FY2012 Budget Development**

	PEOPLE SOFT					3 Year			
	INCOME COST CENTER					Average	Est. FY11	FY10	FY11 - FY10
	Sp Type	Fund	Dept	Prog	Proj	Market Value	Income	Actual Income	Income Change
Galveston Musical	40222	4028	H0090	H1018	NA	22,166	887	995	(108)
Lack, Abram	40812	4042	H0090	D3094	NA	117,547	4,702	5,337	(635)
Hirsch, Winifred & Maurice	12154	4028	H0090	H1220	NA	10,779,870	431,195	-	431,195
Claridge, Ruth	16669	4028	H0090	H1226	NA	37,633	1,505	1,688	(183)
Schissler Foundation	16670	4028	H0090	H1228	NA	198,790	7,952	8,628	(676)
West, Neva & Wesley	14160	4028	H0090	H1246	NA	378,486	15,139	16,689	(1,550)
Shaw, Betty	16560	4028	H0090	H1248	NA	15,658	626	703	(77)
Grant, Richard	16561	4028	H0090	H1250	NA	167,178	6,687	7,589	(902)
School Of Music Quasi	17270	4042	H0090	A1690	NA	4,250,110	-	-	-
Head, Jeremy	16562	4028	H0090	H1252	NA	29,898	1,196	1,327	(131)
Sarofim, Louisa	17288	4042	H0090	A1680	NA	40,147	1,606	1,801	(195)
Charles & Dorothy Riesen	16608	4028	H0090	H1286	NA	108,148	-	-	-
Edythe Bates Old Quasi	36165	4042	H0090	D3560	NA	932,445	37,298	41,115	(3,817)
Alkek-Williams Music	16606	4028	H0090	H1282	NA	44,103	1,764	-	1,764
Melcher, Lucille Endow	40813	4042	H0090	D3095	NA	441,384	-	-	-
Alkek Schol Endow	10860	4028	H0090	H1314	NA	18,366	-	-	-
Margaret & James Elkins	16740	4028	H0090	H1316	NA	22,011	-	-	-
Wilheimina R. Morian End	16737	4028	H0090	H1308	NA	8,804	-	-	-
Linda & Ken Lay Family End	16735	4028	H0090	H1304	NA	22,011	-	-	-
Charlene & Phillip Carrol	16738	4028	H0090	H1310	NA	8,804	-	-	-
Marilyn & R.E. Reamer End	16736	4028	H0090	H1306	NA	22,011	-	-	-
Betty & Harry Jukes End	16734	4028	H0090	H1302	NA	9,795	-	-	-
Larry Gatlin Music End	16733	4028	H0090	H1300	NA	8,925	-	-	-
Robert J. Jones Endow	16743	4028	H0090	H1324	NA	12,197	488	538	(50)
Stephen Harbachick End	40219	4028	H0090	H0765	NA	8,420	-	-	-
Edythe Bates Old Choral Quasi	40814	4042	H0090	D3096	NA	62,394	-	-	-
Edythe Bates Old Orch Quasi	40815	4042	H0090	D3097	NA	62,394	-	-	-
Melcher Violin	16577	4028	H0090	H2414	NA	323,153	-	-	-
McCollum Eleanor	16576	4028	H0090	H2413	NA	13,288	-	-	-
Alkek/Williams Chair	40816	4042	H0090	A2212	NA	939,961	-	-	-
Henry, William G., Jr.	40226	4028	H0090	H2543	NA	7,951	-	-	-
Czarnek And Patalik Music	40227	4028	H0090	H2544	NA	9,418	-	-	-
The Thelma Hearm Scholarship	40223	4028	H0090	H2540	NA	24,698	-	-	-
Tomatz, David & Ann	40224	4028	H0090	H2541	NA	164,066	-	-	-
Saunders, Betti & Charles	40225	4028	H0090	H2542	NA	22,142	-	-	-
Wiggins, Jayne & Albert	29329	4028	H0090	H2592	NA	109,580	-	-	-
Strane, Miriam ⁽¹⁾	42055	4028	H0090	H9614	NA	8,542	342	362	(20)
Pollack, Howard Scholarship	30994	4028	H0090	H9666	NA	39,465	1,579	-	1,579
Patterson, Claire North Scholarship	30996	4028	H0090	H9667	NA	27,767	1,111	-	1,111
Smith, June Duhar Schol. Quasi	31608	4028	H0090	H9675	NA	11,179	447	501	(54)
Old, Edith Bates Prof. Quasi	36880	4042	H0090	A9750	NA	130,612	5,224	-	5,224
Druary, John Scholarship	36226	4028	H0090	H9767	NA	21,391	856	917	(61)
George L & Myrajane E Hall Sch	40821	4042	H0090	D9854	NA	9,362	-	-	-
Fredric A & Betsy C Weber Sch	38291	4028	H0090	H2851	NA	17,685	-	-	-
Martin Antonio Flores Sch End	39326	4028	H0090	H2868	NA	8,819	-	-	-
Marian & Samuel W. Spain End for Grad or UGR Students in Music	41966	4028	H0090	H9976	NA	166,440	-	-	-
J. Scott Chase Endowment in Opera	44723	4042	H0090	D8052	NA	20,131	805	779	26
Madison Quasi Professorship at the Moores Sch of Music	48172	4042	H0090	A8130	NA	537,719	21,509	-	21,509
Charles & Margie Denson Sch End	40355	4028	H0091	H2889	NA	14,150	-	-	-
Silin, Charles	10775	4028	H0092	H1665	NA	18,044	722	809	(87)
Texas German Studies	40314	4042	H0092	D3710	NA	9,670	387	431	(44)
Italy In America Endow	40817	4042	H0092	D3098	NA	27,550	-	-	-
Rockefeller Fndn Hisp. Lit Quasi	34555	4042	H0093	D9732	NA	392,061	-	-	-
Brown Fdn Research Director	40336	4042	H0093	B3686	NA	724,593	-	-	-
Sheeler, John Rubin	16471	4028	H0094	H1711	NA	66,538	2,662	3,021	(359)
John Moores Humanitarian Sch	39499	4028	H0094	H3497	NA	17,028	-	-	-
Sylvester Turner Public Service Sch	39500	4028	H0094	H3498	NA	17,028	-	-	-
Debbie Haley Mem Schol Quasi Endow in African Amer Studies	45828	4028	H0094	H3003	NA	26,851	1,074	-	1,074
LULAC	42236	4028	H0095	H1679	NA	64,740	2,590	2,939	(349)

(1) Income Return to Principal.
(2) Income cost center not yet available.

**University of Houston System
Estimated FY11 Endowment Income
For FY2012 Budget Development**

	PEOPLE SOFT					3 Year			
	INCOME COST CENTER					Average	Est. FY11	FY10	FY11 - FY10
	Sp Type	Fund	Dept	Prog	Proj	Market Value	Income	Actual Income	Income Change
Cain Scholarship - UH	16517	4028	H0095	H1733	NA	1,269,946	50,798	57,659	(6,861)
Benito Torres Endowed Scholarship in CMAS	16603	4028	H0095	H1274	NA	28,958	1,158	1,259	(101)
Fraga Brothers	28032	4028	H0095	H9617	NA	35,883	1,435	1,573	(138)
Ctr for Mexican American Studies	38840	4042	H0095	A9651	NA	19,123	-	-	-
Maresh, Thelma Burnett Schol.	30288	4028	H0095	H9653	NA	85,759	3,430	-	3,430
George & Kathryn Martinez End	34654	4042	H0095	A9657	NA	11,317	453	499	(46)
Bob Perry Mexican American Studies Endow	30628	4042	H0095	A9664	NA	349,390	13,976	-	13,976
Palacios Ctr for Mexican Amer Studies	34641	4042	H0095	A9674	NA	15,364	615	-	615
Miguel & Ana Loya	34566	4042	H0095	A9686	NA	15,814	633	-	633
Tacho & Cindy Mindiola	34637	4042	H0095	A9704	NA	19,532	-	-	-
Mendenhall, Trinidad Vasquez	34639	4042	H0095	D9713	NA	45,750	-	-	-
Union Pacific for Mex.Amer Studies	34640	4042	H0095	D9718	NA	9,517	-	-	-
Wells Fargo Ctr for Mex Amer	34638	4042	H0095	D9722	NA	92,468	-	-	-
Soliz, Olga MAS	35689	4042	H0095	D9761	NA	20,092	-	-	-
Congressman Gene Green MAS	38645	4042	H0095	D9769	NA	9,804	-	-	-
Moreno, Rosanna & Carlos Family ⁽¹⁾	36337	4042	H0095	D9798	NA	6,870	275	278	(3)
HEB Endowment MAS	36920	4042	H0095	D9811	NA	115,080	-	-	-
Gonzalez, Irma Diaz & Roberto ⁽¹⁾	37636	4042	H0095	D2997	NA	5,268	211	-	211
State Farm - Ctr Mex Amer.	37305	4042	H0095	D2980	NA	18,291	-	-	-
Musa & Khaleda Dakri Endow	38143	4042	H0095	D3575	NA	22,759	-	-	-
Sanchez Family Found End	38842	4042	H0095	D9874	NA	22,208	-	-	-
Mexican Women's Initiative End	40236	4042	H0095	D9877	NA	15,909	636	-	636
Amegy Bank of Texas Endowment	40237	4042	H0095	D9908	NA	10,980	439	-	439
JPMorgan Chase End for Excellence in CMAS	42032	4042	H0095	D9977	NA	20,805	-	-	-
Fiesta Mart Endow-MAS	42230	4042	H0095	D9987	NA	8,783	351	-	351
Dr. Tatcho Mindiola Director's Endow for CMAS	43737	4042	H0095	D8054	NA	67,129	2,685	1,558	1,127
Blaffer Gallery	40818	4042	H0097	D3099	NA	584,998	23,400	26,560	(3,160)
Robinson, Minette & Jerome	36873	4028	H0097	H9621	NA	31,898	1,276	-	1,276
Social Sciences Alumni Quasi	16539	4028	H0120	H1480	NA	10,539	422	473	(51)
Kenneth Lay Economics Prof	17316	4042	H0122	A1824	NA	378,132	15,125	17,168	(2,043)
Joel Sailors Fac Fellow Economic	17310	4042	H0122	D1383	NA	274,142	-	-	-
Primeaux, Walter & Natalie	40231	4028	H0122	H2510	NA	42,974	-	-	-
Graham Professorship in Econ	40819	4042	H0122	A2213	NA	256,868	10,275	11,663	(1,388)
Dept of Economics Professorship	35735	4042	H0122	A9766	NA	134,743	-	-	-
Hadad, Daniel	14032	4028	H0123	H0596	NA	26,819	1,073	1,203	(130)
Marlatt E.E.	16888	4028	H0123	H0906	NA	21,345	854	958	(104)
Walker, Hap	40233	4028	H0123	H0994	NA	24,488	980	1,099	(119)
Hayden, Carlos	16534	4028	H0123	H1468	NA	29,270	1,171	1,311	(140)
Shearne, Major Charles PES	10325	4028	H0123	H2479	NA	113,255	4,530	-	4,530
Jones, Benjamin Scott	40232	4028	H0123	H9573	NA	13,617	545	-	545
Everett J. & Mary Lee Lanik Sch End	38469	4028	H0123	H3490	NA	20,660	-	-	-
Ross Lence Dist Univ Teaching Chair	40820	4042	H0124	A2214	NA	278,346	11,134	-	11,134
Lence Distinguished Chair Quasi	40820	4042	H0124	A2214	NA	45,092	1,804	2,011	(207)
Kenneth Lay Professorship	17213	4042	H0124	A1804	NA	357,382	14,295	16,226	(1,931)
Yelderman, Pauline Chair	32063	4042	H0124	A9035	NA	507,294	-	-	-
Peek Family Scholarship Endowment ⁽¹⁾	42913	4028	H0124	H3685	NA	6,039	242	-	242
Love, John W.	10839	4028	H0125	H0792	NA	5,242	210	235	(25)
Callicut, Laurie Quasi	16931	4028	H0125	H0624	NA	50,695	2,028	2,302	(274)
McCary, John Leslie	16508	4028	H0125	H1681	NA	20,997	840	942	(102)
MacNaughton, John	12091	4028	H0125	H1683	NA	143,629	5,745	6,463	(718)
Arnold, Genevieve Psychology	30177	4028	H0125	H2609	NA	33,061	1,322	-	1,322
Osborn, Bart Industrial Org	40234	4028	H0125	H0492	NA	55,641	2,226	-	2,226
Mont H. Jr. & Jane Goldston End Grad Fellowship	48170	4028	H0125	H8101	NA	242,585	9,703	-	9,703
Joseph S. & Rosella H. Werlin Memorial Scholarship Endowment	Multiple Allocations (See Attached)					89,904	3,596	4,008	(412)
Werlin, Joseph Sociology Faculty	34049	4042	H0126	D9728	NA	58,918	-	-	-
Center Public Policy Quasi	40209	4042	H0128	D1471	NA	166,235	6,649	7,547	(898)
Lanier, Robert Chair	40208	4042	H0128	A1956	NA	458,407	-	-	-
Dr. Richard Murray Sch End	42287	4028	H0128	H3521	NA	101,411	-	-	-
William Moffit Excellence in Band Studies End	44304	4042	H0447	D9803	NA	59,618	-	-	-

(1) Income Return to Principal.
(2) Income cost center not yet available.

University of Houston System
Estimated FY11 Endowment Income
For FY2012 Budget Development

	PEOPLE SOFT					3 Year	Est. FY11 Income	FY10 Actual Income	FY11 - FY10 Income Change
	INCOME COST CENTER					Average			
	Sp Type	Fund	Dept	Prog	Proj	Market Value			
William Douglas Allums Band Endowment	43951	4042	H0447	D8062	NA	247,456	9,898	9,548	350
Mitchell, Cynthia Woods Center	40071	4042	H0473	D9677	NA	14,986,839	-	-	-
Hispanic Literature Chair	41753	4042	H0504	D1263	NA	1,177,444	47,098	51,918	(4,820)
Johnson, Harvey L.	41754	4028	H0504	H1532	NA	7,181	287	317	(30)
Spanish PhD Endow	41755	4028	H0504	H1532	NA	91,197	-	-	-
Public History Quasi	43941	4042	H0517	D3093	NA	71,575	2,863	3,250	(387)
Turner, Sylvester ⁽¹⁾	20827	6045	H0650	H9205	NA	29,490	1,180	1,254	(74)
Hobby Center for Public Policy Quasi Endowment ⁽²⁾	48041	6065	H0650	D8164	NA	1,099,695	43,988	-	43,988
SUBTOTAL COLLEGE OF LIBERAL ARTS & SOCIAL SCIENCES						59,648,204	1,202,218	710,569	491,649
Jack & Betty Cannata Endow	17340	4042	H0102	D1323	NA	134,142	5,366	6,018	(652)
Natural Sciences Quasi	16968	4028	H0102	H0727	NA	105,346	4,214	4,783	(569)
NSM Alumni	16707	4028	H0102	H1406	NA	66,643	-	-	-
Perkin Elmer Corp.	16708	4028	H0102	H1410	NA	16,755	670	752	(82)
Gordon, H & B.Davis	40839	4028	H0102	H1412	NA	163,558	6,542	7,426	(884)
Phieffer, Eckhard Chair Quasi	40840	4042	H0102	A2217	NA	800,270	32,011	-	32,011
Cheung, Edson	10334	4028	H0102	H2486	NA	26,346	-	-	-
Irwin, Melinda	40841	4028	H0102	H2539	NA	30,365	1,215	-	1,215
Rodd, Frank R.	40842	4028	H0102	H2591	NA	24,047	-	-	-
Hall, George & Myrajane Schol.	36716	4028	H0102	H9725	NA	10,561	-	-	-
Battle, Jack & Peggy	40843	4042	H0102	D9744	NA	38,401	-	-	-
Tansey Family Scholarship	36689	4028	H0102	H9758	NA	71,409	-	-	-
Henry W. Graham End Sch	39876	4028	H0102	H2875	NA	8,282	-	-	-
L. Green & B. Schachtel-Green	41042	4028	H0102	H2920	NA	9,048	-	-	-
Joseph Schatz Scholarship End	43155	4028	H0102	H8029	NA	8,918	-	-	-
College of NSM Growth Fund End	43568	4042	H0102	D8049	NA	19,531	781	705	76
Margaret S. Sheriff Geophysics Term End	44069	4042	H0102	A8073	NA	104,419	4,177	4,008	169
Robert E. Sheriff Sequence Stratigraphy Term End	44070	4042	H0102	A8074	NA	104,419	4,177	4,008	169
Cominsky, Catherine	40844	4042	H0104	D3105	NA	41,341	1,654	1,855	(201)
Houston Livestock	16623	4028	H0104	H1394	NA	302,224	12,089	13,474	(1,385)
Huggins, Sara	16624	4028	H0104	H1398	NA	22,723	909	1,019	(110)
Cullen (Chem)	40274	4042	H0107	D3707	NA	165,496	6,620	7,514	(894)
Welch Foundation Chair	15332	5022	H0107	B0001	G003290	3,931,161	157,246	175,269	(18,023)
NSM-Chemistry Quasi	40273	4042	H0107	D3706	NA	103,102	4,124	4,681	(557)
Lomonte, John N Scholarship	40240	4028	H0107	H3503	NA	81,129	-	-	-
Shanfield, Henry ⁽¹⁾	40241	4028	H0107	H3504	NA	2,195	-	-	-
Jay K. Kochi Grad Fellowship in Chemistry Endowment	45451	4028	H0107	H8085	NA	94,635	3,785	-	3,785
Milton Dobrin Quasi Endow	40845	4028	H0109	H0458	NA	50,602	2,024	2,297	(273)
UH GAA	40846	4028	H0109	H0908	NA	68,378	2,735	3,104	(369)
Margaret & Robert Sheriff Seismology Chair	10791	4042	H0109	D1217	NA	403,331	16,133	18,312	(2,179)
Robert & Margaret Sheriff End/Geophysics	41079	4042	H0109	D3156	NA	97,313	-	-	-
Leslie & Alan Ma Wong Scholarship End ⁽¹⁾	43874	4028	H0109	H8030	NA	6,799	272	156	116
Cullen (Math)	40847	4042	H0110	D3106	NA	166,209	6,648	7,546	(898)
Benner, Charles	16773	4028	H0110	H0788	NA	132,652	5,306	5,543	(237)
Grover, Blanche	40848	4028	H0110	H0984	NA	116,888	4,676	4,792	(116)
Neal Amundson Dist Lecture Series Endow	42812	4042	H0110	A3528	NA	45,159	-	-	-
Greater Texas Fdn End Sch for TeachHouston	43379	4028	H0110	H2922	NA	126,996	-	-	-
Teach Houston Challenge Fund Endowment ⁽¹⁾	43583	4028	H0110	H8047	NA	39,643	1,586	307	1,279
Cullen (Phy)	40849	4042	H0112	D3107	NA	165,496	6,620	7,514	(894)
SUBTOTAL NATURAL SCIENCES & MATHEMATICS						7,905,928	291,580	281,083	10,497
White, William E.	14028	4028	H0113	H0761	NA	80,890	3,236	3,652	(416)
Kuhlman, William Optometry	16380	4028	H0113	H1649	NA	31,291	1,252	1,404	(152)
Jankiewicz, Harry	14144	4028	H0113	H1659	NA	35,131	1,405	1,576	(171)
Coburn, O.W. Quasi	16389	4028	H0113	H1667	NA	111,744	4,470	5,073	(603)
Greeman Petty Professorship	17239	4042	H0113	A1774	NA	712,782	28,511	30,951	(2,440)
Lovitt Quasi Endow	10909	4042	H0113	A1776	NA	87,295	3,492	3,963	(471)

(1) Income Return to Principal.
(2) Income cost center not yet available.

**University of Houston System
Estimated FY11 Endowment Income
For FY2012 Budget Development**

	PEOPLE SOFT					3 Year			
	INCOME COST CENTER					Average	Est. FY11	FY10	FY11 - FY10
	Sp Type	Fund	Dept	Prog	Proj	Market Value	Income	Actual Income	Income Change
Adler-Grinberg	16635	4028	H0113	H0812	NA	44,447	1,778	1,988	(210)
Borish Chair	17237	4042	H0113	A1768	NA	809,179	32,367	36,738	(4,371)
Dr Clinton & Dorothy DeWolfe Schol Endow	16838	4028	H0113	H0502	NA	56,746	2,270	2,576	(306)
Zipper, Robert	46046	4028	H0113	H2906	NA	22,828	913	1,024	(111)
Murphy, Mary Quasi	17235	4042	H0113	B1340	NA	86,891	3,476	3,944	(468)
Briggs, Charles R.	17230	4042	H0113	B1338	NA	45,757	-	-	-
Marco, Seymour	13061	4028	H0113	H1420	NA	65,299	-	-	-
TSO Scholarship Endow	16713	4028	H0113	H1422	NA	37,392	-	-	-
Armistead, Cora	40853	4042	H0113	D3109	NA	60,170	2,407	-	2,407
Goodrich, Ann Schol Endow	40854	4028	H0113	H2907	NA	18,243	-	-	-
Shulman, Lanny & Molly Scholarship	40202	4028	H0113	H2530	NA	28,585	-	-	-
Pediatric Optometry Quasi	35094	4042	H0113	D9734	NA	87,032	-	-	-
Stewart, Dr. Charles	40855	4042	H0113	A9788	NA	124,756	-	-	-
Kevin McDavid-Vision Source Prof	40856	4042	H0113	A9789	NA	123,569	-	-	-
Golden-Golden Professor - Opt	40857	4042	H0113	A9790	NA	111,432	-	-	-
Thacker, Steve & Susan Schol Quasi	40201	4028	H0113	H9804	NA	38,508	1,540	1,536	4
Delta Gamma Richard Shirk Family	40205	4042	H0113	D9806	NA	104,424	-	-	-
UH Coll of Optometry Sch Endow ⁽¹⁾	40200	4028	H0113	H3486	NA	17,108	684	204	480
Golden Brothers Presidential Endowed Fellowship ⁽¹⁾	40199	4028	H0113	H3487	NA	26,801	-	-	-
Mikela D. Kwan Scholarship Endowment	43464	4028	H0113	H3702	NA	15,725	629	366	263
Smith-Wensveen Fellowship Endowment ⁽¹⁾	45537	4028	H0113	H2655	NA	18,292	732	-	732
The Manny Family Fellowship Endow in Opt	46426	4028	H0113	H8141	NA	53,734	2,149	-	2,149
Elena Estefan Fellowship End in the College of Optometry	46454	4028	H0113	H8144	NA	53,616	2,145	-	2,145
SUBTOTAL OPTOMETRY						3,109,665	93,456	94,995	(1,539)
Pharmacy	40858	4042	H0116	D3110	NA	154,942	6,198	7,035	(837)
Mading, Cora & Webb Scholarship	16490	4028	H0116	H1452	NA	85,927	3,437	3,901	(464)
Ferguson, Noel	40859	4028	H0116	H0858	NA	29,037	1,161	1,303	(142)
Pharmacy Golf Tourn. Scholarship	40860	4028	H0116	H0904	NA	119,733	4,789	5,436	(647)
Webber, George & Cecilia	16479	4028	H0116	H1428	NA	48,320	1,933	2,194	(261)
Doyle	13060	4028	H0116	H1430	NA	33,081	1,323	1,484	(161)
Leadership Passport	17275	4042	H0116	E0420	NA	28,930	1,157	1,284	(127)
Buckley, Joseph P.	16480	4028	H0116	H1432	NA	36,560	1,462	1,624	(162)
Williams, Louis Awards	40861	4028	H0116	H2908	NA	14,480	-	-	-
Robert L. Boblitt	11998	4028	H0116	H1436	NA	11,146	446	491	(45)
Pieratt, Harold & Doris	14153	4028	H0116	H1438	NA	12,260	490	-	490
Lehrman/Kolbe Quasi	16481	4028	H0116	H1440	NA	18,898	-	-	-
Deans Pharmacy Sch	16482	4028	H0116	H1442	NA	34,961	-	-	-
Roy Weise Jr Schol	16483	4028	H0116	H1444	NA	10,627	-	-	-
Kmart Endow	16489	4028	H0116	H1448	NA	25,510	1,020	-	1,020
John & Paula Lovoi	16484	4028	H0116	H1446	NA	29,370	-	-	-
Wayne & Dolores Gentsch	14154	4028	H0116	H1450	NA	9,693	-	-	-
Gupta Academic Award End	16491	4028	H0116	H1454	NA	17,739	-	-	-
Randall's Endowment Schol	16492	4028	H0116	H1456	NA	23,772	-	-	-
Ameena Colombowala Mem	16493	4028	H0116	H1458	NA	8,995	-	-	-
Kroger Pharmacy Endow Sc	16494	4028	H0116	H1460	NA	22,187	-	-	-
CVS Caremark Scholarship Endowment	16495	4028	H0116	H1464	NA	19,206	-	-	-
Alam, Dr. Maktoob	10338	4028	H0116	H2489	NA	8,862	-	-	-
Webb, Sandra Pharmacy Quasi	10036	4028	H0116	H2487	NA	7,860	-	-	-
DeVido, Rosemary & David	10337	4028	H0116	H2488	NA	51,767	-	-	-
Tarrant County Pharmacy Assoc.	27124	4028	H0116	H2551	NA	20,799	-	-	-
O'Neill, Michael & Donna	27114	4028	H0116	H2549	NA	8,690	-	-	-
Fitzsimmons, Dana S.	27122	4028	H0116	H2550	NA	15,879	-	-	-
Goel Academic Achievement	27126	4028	H0116	H2552	NA	8,893	-	-	-
Bove, Frank	29249	4028	H0116	H2590	NA	9,864	395	-	395
Brown, Robert Scholarship	16495	4028	H0116	H2589	NA	13,162	526	588	(62)
Handal, Suzanne May Scholar.	37594	4028	H0116	H2829	NA	10,540	422	-	422
Patel, Nilkanth & Yamini	40197	4028	H0116	H9749	NA	9,568	-	-	-

(1) Income Return to Principal.
(2) Income cost center not yet available.

University of Houston System
Estimated FY11 Endowment Income
For FY2012 Budget Development

	PEOPLE SOFT					3 Year	Est. FY11 Income	FY10 Actual Income	FY11 - FY10 Income Change
	INCOME COST CENTER					Average			
	Sp Type	Fund	Dept	Prog	Proj	Market Value			
Werthemir, Henry Scholarship	37595	4028	H0116	H2830	NA	12,728	-	-	-
Mom's Pharmacy Schol Endow	39494	4028	H0116	H9828	NA	9,713	-	-	-
Lynn & Bill Simpson Sch End	39493	4028	H0116	H9844	NA	8,945	-	-	-
Andries Lott Schol Endow	39492	4028	H0116	H9848	NA	11,529	-	-	-
The Red White & Blue Schol End	39491	4028	H0116	H9849	NA	8,815	-	-	-
James & Elena Hesbrook End Sch	39313	4028	H0116	H9881	NA	7,150	286	-	286
Lena & Marc Malacoff Sch End	40196	4028	H0116	H9893	NA	21,823	-	-	-
Leland F. Zatopek Memorial Sch End	40195	4028	H0116	H9896	NA	9,352	-	-	-
Den B. Chin & May K. Chin End	40194	4028	H0116	H9899	NA	15,328	-	-	-
Mark Shadle Scholarship Endowment	40193	4028	H0116	H9904	NA	8,481	-	-	-
John P. & May Gee Sch End	40192	4028	H0116	H9907	NA	16,028	641	-	641
Dean Joseph P. Buckley End	40191	4028	H0116	H9913	NA	8,495	-	-	-
Kenton Lloyd Smith Pharmacy Ethics	40297	4028	H0116	H9919	NA	9,513	-	-	-
Kelsey-Seybold Scholarship Endowment	40552	4028	H0116	H9922	NA	8,276	-	-	-
Scholz Family Endowment	40550	4028	H0116	H2892	NA	8,318	-	-	-
Saenz/Cantu Scholarship Endowment	41242	4028	H0116	H9936	NA	8,044	-	-	-
Gary K. and Linda B. Rice Sch End	41996	4028	H0116	H9937	NA	7,735	-	-	-
Andrea L. Smesny Schol Endow	42756	4028	H0116	H9940	NA	7,827	313	-	313
Ohia-Edet Memorial Endow	42755	4028	H0116	H9946	NA	8,722	-	-	-
Bruce & Ann Biundo End Sch	42758	4028	H0116	H9947	NA	6,190	248	-	248
Suzanne Woo Honorary Sch Endow	41744	4028	H0116	H9949	NA	7,263	291	-	291
Houston Area Pharmacist Association End Sch	42707	4028	H0116	H9958	NA	9,035	-	-	-
Mortar & Pedal Ride Scholarship Endowment	41997	4028	H0116	H9972	NA	8,303	-	-	-
Coll of Pharmacy Dean's Advisory Council	42344	4028	H0116	H9984	NA	27,338	1,094	901	193
Henry & Charlene McClain Endowed Scholarship	42708	4028	H0116	H9989	NA	7,518	-	-	-
Brookshire Brothers Pharmacy Endowed Scholarship	42706	4028	H0116	H9992	NA	16,680	-	-	-
W. Benjamin Fry Rio Grande Valley Endowed Sch ⁽¹⁾	42754	4028	H0116	H8002	NA	5,844	234	170	64
Kai-King Chow & Cheng-Yok Chow End Sch	42757	4028	H0116	H8006	NA	8,488	-	-	-
Friends of Paul J. Rice Memorial Scholarship End ⁽¹⁾	42870	4028	H0116	H8008	NA	4,674	187	120	67
Texas Pharmacy Foundation Sch End	42868	4028	H0116	H8010	NA	10,557	-	-	-
Elena, Veronica, and Johnny Guerra Sch End	42869	4028	H0116	H8013	NA	5,606	224	170	54
Johnnie Fadal Endowed Scholarship	43117	4028	H0116	H8026	NA	5,665	227	173	54
Shara L. Zatopek Endowed Scholarship ⁽¹⁾	44682	4028	H0116	H8031	NA	3,425	137	74	63
UH College of Pharmacy Dean's Executive Council	43676	4028	H0116	H8032	NA	8,178	327	309	18
Kenneth & Patty Korthauer Endowed Scholarship	44678	4028	H0116	H8034	NA	6,931	277	-	277
Prithvial & Manmeet Likhari "Inspiring Excellence"	44679	4028	H0116	H8035	NA	25,733	-	-	-
Alton & Sandra Kanak Endowed Scholarship	44680	4028	H0116	H8046	NA	6,951	278	185	93
The Lau & Lau UHCop Growth Fund End	44683	4042	H0116	D8069	NA	21,642	866	769	97
James & Theresa Fischer Sch Endowment ⁽¹⁾	44681	4028	H0116	H8071	NA	18,857	754	308	446
Lau & Mrs. Wing Lan Chin Pharm. Sciences End	44031	4042	H0116	D8075	NA	28,368	1,135	1,058	77
Corisman Excellence Presidential Endowed Fellowship ⁽¹⁾	44663	4028	H0116	H8095	NA	5,963	239	124	115
Dr. Diana Chow Grad Fellowship End in Pharmaceutics	48159	4028	H0116	H8169	NA	16,109	644	-	644
SUBTOTAL PHARMACY						1,423,395	33,161	29,701	3,460
David, Gerson	16598	4028	H0129	H0980	NA	35,512	1,420	1,593	(173)
Keeper, Cele	17255	4042	H0129	A1848	NA	55,480	2,219	2,519	(300)
Stewart, Josephine	16651	4028	H0129	H1502	NA	16,851	674	756	(82)
Stewart, Josephine Quasi ⁽¹⁾	16651	4028	H0129	H1502	NA	1,259	50	53	(3)
Reibenstein, Cynthia	40787	4042	H0129	D3083	NA	57,080	2,283	2,561	(278)
DeBottis ⁽¹⁾	13058	4028	H0129	H2398	NA	61,179	2,447	2,470	(23)
Goldman, Ruthmary	10340	4028	H0129	H2490	NA	11,896	-	-	-
Magner, George	27215	4028	H0129	H2555	NA	10,296	-	-	-
Hearst, W.R.	27562	4028	H0129	H2565	NA	463,727	-	-	-
Latting, Jean Professorship	35079	4042	H0129	A9753	NA	124,085	-	-	-
Keeper, Cele & Samuel Prof	36073	4042	H0129	A2104	NA	128,694	-	-	-
Gerson & Sabina David End Prof	37860	4042	H0129	A2151	NA	107,187	-	-	-
Karen Stout Faculty End Fund	40243	4042	H0129	D1785	NA	20,006	800	-	800
Dr. Fernando J. Zuniga Y Rivero Doctoral Fellowship	45076	4028	H0129	H3773	NA	242,347	9,694	-	9,694

(1) Income Return to Principal.
(2) Income cost center not yet available.

University of Houston System
Estimated FY11 Endowment Income
For FY2012 Budget Development

	PEOPLE SOFT					3 Year			
	INCOME COST CENTER					Average	Est. FY11	FY10	FY11 - FY10
	Sp Type	Fund	Dept	Prog	Proj	Market Value	Income	Actual Income	Income Change
Hagen, John L.	40374	4042	H0143	D3061	NA	8,507	340	375	(35)
Franzheim, Kenneth	27821	4042	H0143	D9612	NA	170,935	6,837	5,531	1,306
Evans, Emily Scott Professorship	28694	4042	H0143	D9630	NA	489,383	-	-	-
Kochi, Jay & Marion Library	30760	4042	H0143	D9662	NA	39,401	1,576	1,530	46
Miles, Edwin Library	40375	4042	H0143	D2700	NA	21,854	-	-	-
El-Farouq Foundation	40376	4042	H0143	D1405	NA	51,170	2,047	-	2,047
Ruth, Donna A Library Excellence	36945	4042	H0143	D9820	NA	23,393	-	-	-
Paula A Kelleher Endowment	38225	4042	H0143	D3587	NA	31,740	-	-	-
Jack E Wilson Endowment	46027	4042	H0143	D9855	NA	12,578	503	-	503
Ambassador Kenneth Franzheim II End	40824	4042	H0143	A2216	NA	435,888	-	-	-
H. David Kaplan Endowment ⁽¹⁾	41331	4042	H0143	D3163	NA	2,625	105	-	105
John P. McGovern Fdn Library Materials End	42416	4042	H0143	D3213	NA	55,767	-	-	-
M.D. Anderson Library Acorn Growth Fund End	42417	4042	H0143	D3214	NA	40,368	1,615	-	1,615
Kathleen O. Macnerney Library Acquisition End	43548	4042	H0143	D3825	NA	774,420	30,977	-	30,977
HARLIC Endow MD Anderson Lib	45883	4042	H0143	D8131	NA	11,212	448	-	448
Anne & Edgar Lackner Quasi Endow to support MD Anderson Lib	45888	4042	H0143	D8132	NA	16,378	655	-	655
Donald & Jane McClelland Library Endowment	47126	4042	H0143	D8168	NA	11,105	444	-	444
SUBTOTAL LIBRARY						5,645,458	150,933	126,702	24,231
International Student	16739	4028	H0217	H1312	NA	59,196	2,368	2,688	(320)
Burke, Jack & D'Ann	40825	4028	H0217	H1032	NA	30,191	1,208	1,355	(147)
Phi Beta Delta	40826	4042	H0217	D3101	NA	17,596	704	-	704
Counseling & Psych.Serv. Quasi	10339	4042	H0220	E0502	NA	8,490	-	-	-
Residence Halls Facilities Improvement ⁽¹⁾	17098	4042	H0231	E0454	NA	2,475	99	105	(6)
Rockwell Foundation	17000	4042	H0232	E0490	NA	494,050	19,762	22,431	(2,669)
SUBTOTAL STUDENT AFFAIRS						611,999	24,141	26,579	(2,438)
McCammon Molecular Design	40850	4042	H0103	D3108	NA	63,657	2,546	2,890	(344)
Welch Foundation, Chemistry	15358	5022	H0239	B0001	G003016	2,535,195	101,408	113,030	(11,622)
Welch Foundation	44475	5021	H0282	B0001	G098682	4,296,586	171,863	199,788	(27,925)
Welch Chair in Chemistry - Grant E0044	44478	5021	H0282	B0001	G098679	1,433,891	57,356	54,552	2,804
TLL Temple Foundation Chair	36824	4042	H0452	A1760	NA	2,886,907	115,476	131,072	(15,596)
Moores TCSUH	36826	4042	H0452	B1388	NA	1,713,840	68,554	77,812	(9,258)
Superconductivity Quasi	36825	4042	H0452	B1390	NA	3,542,435	141,697	160,835	(19,138)
Cullen Trust for Higher Ed HIM Endow	36872	4042	H0452	B1392	NA	1,928,683	77,147	69,794	7,353
Chu, Paul C.W.	40862	4028	H0452	H1408	NA	37,643	1,506	1,689	(183)
Temple - TCSUH	36828	4042	H0452	B1336	NA	356,139	14,246	16,170	(1,924)
Hou International Materials Forum	37557	4042	H0452	B4386	NA	269,958	-	-	-
Hawley, Cora Scholarship	40863	4028	H0452	H9800	NA	55,805	-	-	-
SUBTOTAL RESEARCH						19,120,740	751,799	827,632	(75,833)
Alumni Center Quasi	40837	4042	H0261	D3104	NA	54,472	2,179	2,473	(294)
SUBTOTAL ADMINISTRATION & FINANCE						54,472	2,179	2,473	(294)
Moores Univ Priority	Multiple Allocations (See Attached)					16,860,961	-	-	-
UH Core Pool Quasi Endowment	43693	2077	H0264	F3681	NA	33,386,739	-	-	-
Taylor, Josie B Quasi	40434	6003	H0278	E5089	NA	442,173	17,687	20,067	(2,380)
SUBTOTAL INSTITUTIONAL						50,689,873	17,687	20,067	(2,380)
Blakely, Newell Professorship	40129	4042	H0476	A1696	NA	218,464	8,739	9,919	(1,180)
Judge Ruby Kless Sondock Lectureship	40151	4042	H0481	A1708	NA	182,031	7,281	8,265	(984)
Frankel Quasi	41356	4042	H0484	D3100	NA	74,021	2,961	3,361	(400)
Garwood, W. St. John	40175	4028	H0485	H1689	NA	130,932	5,237	5,945	(708)
Stevens, Barksdale	40174	4028	H0485	H1641	NA	9,197	368	413	(45)

(1) Income Return to Principal.
(2) Income cost center not yet available.

University of Houston System
Estimated FY11 Endowment Income
For FY2012 Budget Development

	PEOPLE SOFT					3 Year			
	INCOME COST CENTER					Average	Est. FY11	FY10	FY11 - FY10
	Sp Type	Fund	Dept	Prog	Proj	Market Value	Income	Actual Income	Income Change
Fultz, Mr & Mrs Larry Quasi	40172	4028	H0485	H1661	NA	62,430	2,497	2,834	(337)
Smith, Judge Shern	40173	4028	H0485	H1677	NA	17,791	712	798	(86)
Bacon, Judge Mary	40170	4028	H0485	H1390	NA	66,984	2,679	-	2,679
Crowther, James	40171	4028	H0485	H1392	NA	131,796	5,272	-	5,272
William Bates Chair	41355	4042	H0493	A2215	NA	581,598	23,264	25,919	(2,655)
SUBTOTAL LAW						1,475,245	59,010	57,454	1,556
Prudential	Multiple Allocations (See Attached)					167,222	6,689	7,592	(903)
Gordon, Aron Scholarship						234,431	9,377	10,643	(1,266)
Doss, R.P.						35,767	1,431	1,602	(171)
Dodds Family						91,593	-	-	-
SUBTOTAL UH ALLOCATIONS						529,013	17,497	19,837	(2,340)
TOTAL UNIVERSITY OF HOUSTON						310,308,514	7,341,673	6,879,742	461,931

(1) Income Return to Principal.
(2) Income cost center not yet available.

University of Houston System
Estimated FY11 Endowment Income
For FY2012 Budget Development

	PEOPLE SOFT					3 Year			
	INCOME COST CENTER					Average	Est. FY11	FY10	FY11 - FY10
	Sp Type	Fund	Dept	Prog	Proj	Market Value	Income	Actual Income	Income Change
SYSTEM ADMINISTRATION									
Enron Teaching Award	10585	4042	S0005	D0207	NA	1,083,945	43,358	49,214	(5,856)
Marjorie Gurasich Endow	10412	4042	S0005	H0230	NA	10,423	-	-	-
Baldwin, Mike	11853	4028	S0005	H0799	NA	10,480	419	-	419
SUBTOTAL ACADEMIC AFFAIRS						1,104,848	43,777	49,214	(5,437)
Autrey						443,114	17,725	20,118	(2,393)
Cullinan						372,584	14,903	16,916	(2,013)
Mitchell						4,431,377	177,255	191,998	(14,743)
International Paper						389,733	15,589	17,695	(2,106)
Cullen Leadership						1,093,907	43,756	49,666	(5,910)
Roy & Lillie Cullen End						47,126,669	1,885,067	2,139,662	(254,595)
SUBTOTAL UHSA ALLOCATIONS						53,857,385	2,154,295	2,436,055	(281,760)
Miller, Michel Scholarship	12542	4027	S0008	H2573	NA	12,294	-	-	-
System Matching	10575	4042	S0015	H0214	NA	3,340,961	133,638	147,309	(13,671)
Endowment Plus	10579	4045	S0015	D0203	NA	4,661,951	186,478	211,650	(25,172)
Farfel Lecture Series	10586	4042	S0026	F0795	NA	335,160	13,406	15,217	(1,811)
General Endowment	10589	2076	S0026	F0572	NA	25,123,244	1,004,930	1,140,429	(135,499)
Farfel Lecture Series Quasi	10586	4042	S0026	F0795	NA	75,128	3,005	3,411	(406)
General Purpose	10050	4042	S0026	F0788	NA	880,922	35,237	39,993	(4,756)
UH System Fellowship Quasi Endowment	10320	4042	S0026	D0201	NA	214,265	8,571	9,728	(1,157)
Energy Alumni Assoc. Schol.	10581	4042	S0026	H0218	NA	102,872	4,115	4,671	(556)
Melrose Thompson	10454	2076	S0026	F0574	NA	9,615,382	384,615	-	384,615
UH System Quasi	10325	2076	S0026	F0555	NA	364,775	-	-	-
Houston Jr C Of C	10028	4042	S0026	H0224	NA	213,731	8,549	9,095	(546)
New Century Success	10236	4042	S0026	H0228	NA	31,868	1,275	1,405	(130)
Enron Scholarship	10239	4042	S0026	H0222	NA	692,766	27,711	30,547	(2,836)
System Core Pool Quasi Endowment	12840	2077	S0027	F3480	NA	35,046,512	-	-	-
SUBTOTAL INSTITUTIONAL						80,711,831	1,811,530	1,613,455	198,075
TOTAL SYSTEM ADMINISTRATION						135,674,063	4,009,602	4,098,724	(89,122)

(1) Income Return to Principal.
(2) Income cost center not yet available.

UHS Endowment Fund
Estimated FY11 Allocation of Income Among Beneficiary Accounts
For FY2012 Budget Development

				Estimated FY11	Actual FY10	% Change
1-0-66118	Joseph S. & Rosella H. Werlin Memorial Scholarship Endowment		Total	3,596.00	4,008.00	
	730-6045-H0650-H9030-NA	730-4028-H0126-H1695-NA		500.00	500.00	0.0%
		730-4042-H0126-D1501-NA		3,096.00	3,508.00	-11.7%
				3,596.00	4,008.00	-10.3%
1-0-66125	Prudential		Total	6,689.00	7,592.00	
	730-6051-H0650-H9037-NA	730-4028-H0485-H1012-NA	25%	1,672.25	1,898.00	-11.9%
		730-4028-H0041-H1026-NA	25%	1,672.25	1,898.00	-11.9%
		730-4028-H0086-H1028-NA	25%	1,672.25	1,898.00	-11.9%
		730-4042-H0013-C0459-NA	25%	1,672.25	1,898.00	-11.9%
				6,689.00	7,592.00	-11.9%
1-0-66603	Gordon, Aron Scholarship		Total	9,377.00	10,643.00	
	730-6045-H0650-H8204-NA	730-4028-H0041-H1072-NA	66.67%	6,252.00	7,096.00	-11.9%
		730-4028-H0090-H1232-NA	33.33%	3,125.00	3,547.00	-11.9%
				9,377.00	10,643.00	-11.9%
1-0-66671	Leroy & Lucille Melcher End		Total	262,961.00	298,476.00	
	730-6061-H0650-D9088-NA	730-4042-H0041-A1418-NA	55%	144,628.55	164,162.00	-11.9%
		730-4042-H0041-A1416-NA	37%	97,295.57	110,436.00	-11.9%
		730-4028-H0041-H0572-NA	8%	21,036.88	23,878.00	-11.9%
				262,961.00	298,476.00	-11.9%
1-0-66908	Bohner, Roswell		Total	1,157.00	1,298.00	
	730-6045-H0650-H9199-NA	730-4028-H0213-H1614-NA	50%	578.50	649.00	-10.9%
		730-4042-H0224-E9199-NA	50%	578.50	649.00	-10.9%
				1,157.00	1,298.00	-10.9%
1-0-66924	Moore's Univ Priority		Total	-	-	
	730-6062-H0650-F9023-NA	Income 730-2076-H0264-F0600-NA		-	-	NA
		Principal 730-6062-H0650-F9023-NA		-	-	
				-	-	
1-0-66944	Doss, R.P.		Total	1,431.00	1,602.00	
	730-6045-H0650-H9219-NA	730-4028-H0066-H1162-NA	50%	715.50	801.00	-10.7%
		730-4028-H0136-H1508-NA	50%	715.50	801.00	-10.7%
				1,431.00	1,602.00	-10.7%
1-0-67123	Bill D Cook Faculty Scholars Endow		Total	36,000.00	36,000.00	
	730-6061-H0650-D9312-NA	730-4028-H0073-H1200-NA	100%	36,000.00	36,000.00	NA
				36,000.00	36,000.00	
1-0-67265	Dodds Family		Total	-	-	
	730-6045-H0650-H9392-NA	730-4028-H0058-H2397-NA	48%	-	-	NA
		730-4028-H0109-H2616-NA	48%	-	-	NA
		730-4042-H0058-D3113-NA	4%	-	-	NA
				-	-	NA

University of Houston System
Estimated FY11 System Endowment Income Distribution Among Campuses
For FY2012 Budget Development

FY11 distribution based on 4.0% payout

	Autrey ⁽¹⁾	Cullinan ⁽²⁾	Cullen L'ship ⁽²⁾	Int'l Paper ⁽³⁾	Mitchell ⁽⁴⁾	Cullen R&L ⁽⁵⁾	Total
Distribution	17,725.00	14,903.00	43,756.00	15,589.00	177,255.00	1,885,067.00	
UH	10,339.58	9,045.53	26,558.00	13,277.00	40,000.00	1,696,560.30	1,795,780.41
UHCL	2,954.17	1,890.48	5,551.00	556.00	-	-	10,951.65
UHD	2,954.17	3,011.13	8,841.00	1,600.00	-	188,506.70	204,913.00
UHV	1,477.08	955.86	2,806.00	156.00	35,000.00	-	40,394.94
System Total	17,725.00	14,903.00	43,756.00	15,589.00	75,000.00	1,885,067.00	2,052,040.00

Notes: basis for distribution:

(1) Autrey: UH - 7/12, UHCL - 2/12, UHD - 2/12, UHV - 1/12

Autrey	783-6045-S0651-H9040-NA					
From: 00783-4042-S0015-H0226-NA		To:	10,339.58	730-4028-H0078-H1697-NA		
			2,954.17	759-4027-C0004-H0344-NA		
			2,954.17	784-4028-D0908-H0264-NA		
			1,477.08	765-4028-V0015-H0245-NA		
			<u>17,725.00</u>			

(2) Cullinan and Cullen Leadership Endowments are to be based on proportion of total headcount enrollment.

	Total Headcount	% of System Total	% of Total From Texas	Total from Texas	% of System Total
UH	38,752	60.70%	59.75%	23,153	85.17%
UHCL	8,099	12.69%	11.97%	969	3.56%
UHD	12,900	20.20%	21.63%	2,791	10.27%
UHV	4,095	6.41%	6.65%	272	1.00%
System Total	<u>63,846</u>	<u>100.00%</u>		<u>27,185</u>	<u>100.00%</u>

Cullinan	783-6045-S0651-H9549-NA				
From: 00783-4042-S0015-H0202-NA		To:	9,045.53	730-4028-H0213-H1715-NA	
			1,890.48	759-4027-C0004-H0270-NA	
			3,011.13	784-4027-D0908-H0344-NA	
			955.86	765-4028-V0015-H0319-NA	
			<u>14,903.00</u>		

Cullen Leadership	783-6051-S0651-H9553-NA				
From: 00783-4042-S0015-H0210-NA		To:	26,558.00	730-4052-H0213-H0470-NA	
			5,551.00	759-4027-C0004-H0661-NA	
			8,841.00	784-4040-D0908-H0282-NA	
			2,806.00	765-4028-V0015-H0259-NA	
			<u>43,756.00</u>		

(3) International Paper Endowment are to be based on proportion of total Texas resident enrollment.

International Paper	783-6045-S0651-H9551-NA				
From: 00783-4042-S0015-H0204-NA		To:	13,277.00	730-4027-H0213-H0715-NA	
			556.00	759-4027-C0004-H0274-NA	
			1,600.00	784-4027-D0908-H0346-NA	
			156.00	765-4028-V0015-H0321-NA	
			<u>15,589.00</u>		

(4) Mitchell Endowment is to be distributed to UH and UHV per the amount indicated in the endowment agreement. The remaining balance is to be distributed at the Chancellor's discretion.

Mitchell	783-6065-S0651-F9094-NA				
From: 00783-4042-S0026-H0208-NA		To:	40,000.00	730-4027-H0082-H0846-NA	
			35,000.00	765-4041-V0001-F0428-NA	
			<u>75,000.00</u>		

(5) Roy & Lillie Cullen End 783-6061-S0651-A9100-NA 4-0-66843

Roy & Lillie Cullen End	783-6061-S0651-A9100-NA				
From: 00783-4040-S0015-D0205-NA		To:			
		UH	89.1%	1,679,594.70	730-4040-H0005-F0751-NA
			0.9%	16,965.60	730-5022-H0089-A0001-G004545
			90.0%	1,696,560.30	
		UHD	10.0%	188,506.70	784-4040-D0004-D0422-NA
				<u>1,885,067.00</u>	

UNIVERSITY OF HOUSTON
FY2012 Grants and Contract Revenue and Expenditures Budget Estimates

FY 2012 Projected Expenditures by Revenue Source

	<i>FY 2010 Actual</i>	<i>FY 2011 Budget</i>	<i>FY 2012 Budget</i>	<i>FY 2012 inc./decrease</i>
Federal	\$62,226,388	\$47,000,000	\$47,000,000	\$0
State	\$10,453,392	\$24,000,000	\$24,000,000	\$0
Local	\$107,342	\$600,000	\$600,000	\$0
Private	\$13,039,468	\$17,500,000	\$17,500,000	\$0
Other	\$3,676,422	\$8,085,000	\$8,085,000	\$0
Total Non-ATP/ARP Sponsored Projects	\$89,503,012	\$97,185,000	\$97,185,000	\$0
ATP/ARP Sponsored Projects	\$1,035,106	\$715,000	\$715,000	\$0
Total Sponsored Project Expenditures	\$90,538,118	\$97,900,000	\$97,900,000	\$0

FY 2012 Projected Expenditures by College/Division

	<i>FY 2010 Actual</i>	<i>FY 2011 Budget</i>	<i>FY 2012 Budget</i>	<i>FY 2012 inc./decrease</i>
Administration	\$1,474,794	\$2,310,000	\$2,310,000	\$0
SVP and Provost	\$1,324,372	\$770,000	\$770,000	\$0
Vice President Research	\$107,424	\$18,370,000	\$18,370,000	\$0
Vice President Student Affairs	\$267,972	\$660,000	\$660,000	\$0
Vice President Information Technology	\$0	\$0	\$0	\$0
Architecture	\$38,108	\$44,000	\$44,000	\$0
Bauer College of Business	\$3,255,169	\$2,640,000	\$2,640,000	\$0
Education	\$2,218,621	\$6,600,000	\$6,600,000	\$0
Engineering	\$18,671,182	\$14,850,000	\$14,850,000	\$0
Honors	\$54,670	\$0	\$0	\$0
Hotel & Restaurant Management	\$105,801	\$11,000	\$11,000	\$0
CLASS	\$14,371,374	\$11,000,000	\$11,000,000	\$0
Law	\$430,361	\$220,000	\$220,000	\$0
Library	\$31,645	\$0	\$0	\$0
Natural Science & Mathematics	\$32,605,087	\$22,000,000	\$22,000,000	\$0
Optometry	\$5,572,293	\$6,160,000	\$6,160,000	\$0
Pharmacy	\$4,096,054	\$4,400,000	\$4,400,000	\$0
Social Work	\$3,424,776	\$3,850,000	\$3,850,000	\$0
Technology	\$1,453,309	\$3,300,000	\$3,300,000	\$0
Total Non-ATP/ARP Sponsored Projects	\$89,503,012	\$97,185,000	\$97,185,000	\$0
ATP/ARP Sponsored Projects	\$1,035,106	\$715,000	\$715,000	\$0
Total Sponsored Project Expenditures	\$90,538,118	\$97,900,000	\$97,900,000	\$0

Per Dr. Long, an estimate equal to FY2011 is used due to Federal delay in funding and expiring ARRA/CPRIT

UNIVERSITY OF HOUSTON
Division of Research

Indirect Cost Return - Estimated FY 2012 Return Revised

	<u>PS</u>	<u>Cost Center</u>	<u>FY2012</u>	
	<u>Speed Type</u>		<u>Estimate</u>	
ACADEMIC AFFAIRS/PROVOST				
Senior V.P. for Academic Affairs and Provost	11889	2072-H0005-B0810-NA	3,500	
Learning Support Services	10820	2072-H0221-B0856-NA	6,432	
				9,932
CT BAUR COLLEGE OF BUSINESS				
Dean Business Administration	12060	2072-H0041-B1181-NA	10,673	
Management	17907	2072-H0048-B1187-NA	1,997	
SBDC	17913	2072-H0053-B1201-NA	22,152	34,822
EDUCATION				
Dean, Education	17914	2072-H0058-B1205-NA	19,353	
Institute for Urban Education	18041	2072-H0059-B1231-NA	4,198	
Educational Leadership & Cultural Studies	17917	2072-H0061-B1211-NA	350	
Curriculum and Instruction	17918	2072-H0062-B1215-NA	9,853	
Educational Psychology	17920	2072-H0064-B1219-NA	805	34,559
ENGINEERING				
Dean, Engineering	17895	2072-H0066-B0862-NA	486,500	
Chemical Engineering	17896	2072-H0067-B0864-NA	182,000	
Civil Engineering	18122	2072-H0068-B0882-NA	44,385	
Center for Innovative Grouting Materials and Tech	18018	2072-H0069-B0919-NA	10,463	
Electrical Engineering	18123	2072-H0070-B0886-NA	106,275	
Biomedical Engineering	44312	2072-H0071-B3793-NA	6,300	
Center Neuro-Engineering/Cog Sci	31649	2072-H0426-B1664-NA	10,374	
Center for Integrated Nanosystems	18123	2072-H0070-B0886-NA	32,061	
Tx. Hurricane Center	43616	2072-H0512-B4450-NA	1,880	
Natl Wind Energy Ctr	41306	2072-H0503-B3693-NA	7,897	
Industrial Engineering	18009	2072-H0072-B0892-NA	4,341	
Mechanical Engineering	18011	2072-H0073-B0896-NA	125,008	
Nanosystem Manufacturing Center	18123	2072-H0070-B0886-NA	1,615	
Composites Engineering & Applications Center	18017	2072-H0077-B0917-NA	1,400	
SW Public Safety Ctr	37929	2072-H0455-B1804-NA	2,450	1,022,949
HOTEL AND RESTAURANT MANAGEMENT				
	17866	2072-H0081-B1165-NA	3,240	3,240
LIBERAL ARTS AND SOCIAL SCIENCES				
Dean, CLASS	18019	2072-H0082-B0921-NA	222,612	
Communication Disorders	35776	2072-H0087-B4387-NA	427	
Blaffer Gallery	30169	2072-H0097-B1641-NA	1,260	
History	18024	2072-H0089-B0933-NA	3,500	
Health and Human Performance	13957	2072-H0065-B1223-NA	103,412	
Anthropology	17994	2072-H0121-B1103-NA	274	
Economics	17995	2072-H0112-B1107-NA	927	
Political Science	17997	2072-H0124-B1111-NA	1,260	
Psychology	17999	2072-H0125-B1117-NA	168,412	
Sociology	18207	2072-H0126-B1137-NA	10,906	
Center for Public Policy	12920	2072-H0128-B1149-NA	2,935	515,925
LAW				
Energy Institute	17903	2072-H0098-B1177-NA	14,000	14,000
NATURAL SCIENCES AND MATHEMATICS				
Dean, Natural Sciences and Mathematics	18028	2072-H0102-B0945-NA	560,000	
Biology/Biochemistry	18030	2072-H0104-B0951-NA	126,452	
Institute for Molecular Biology	18194	2072-H0104-B1059-NA	840	
Chemistry	14002	2072-H0107-B0991-NA	108,193	
Computer Science	18071	2072-H0108-B1011-NA	180,179	
Geosciences	18078	2072-H0109-B1023-NA	97,568	
Mathematics	18083	2072-H0110-B1031-NA	52,500	
IMAQS	31882	2072-H0429-B1667-NA	21,000	
CAGE	39743	2072-H0451-B1806-NA	11,312	
CNRSC	43613	2072-H0515-B3766-NA	52,500	
Biology of Behavior Inst	46572	2072-H0552-B2720-NA	6,477	
Physics	18187	2072-H0112-B1041-NA	80,151	1,297,172
OPTOMETRY				
	17864	2072-H0113-B1161-NA	402,500	402,500

**UNIVERSITY OF HOUSTON
Division of Research**

Indirect Cost Return - Estimated FY 2012 Return Revised

	PS	FY2012	
PHARMACY			
Dean, Pharmacy	12065 2072-H0116-B1067-NA	122,500	
Pharmacological and Pharmaceutical Sciences	18198 2072-H0117-B1069-NA	98,055	
Heart/Kidney Institute	18201 2072-H0117-B1079-NA	39,502	
Clinical Sciences and Administration	18210 2072-H0118-B1097-NA	20,173	
CETP	41115 2072-H0117-B2202-NA	13,272	
Inst. Community Health	41073 2072-H0501-B1844-NA	3,549	
Institute for Drug Education/Research	32619 2072-H0422-B1621-NA	1,504	298,555
SOCIAL WORK			
CFIR	10692 2072-H0129-B1169-NA	84,000	
DSPR	43450 2072-H0509-B1171-NA	19,727	
	43463 2072-H0508-B1171-NA	38,781	142,508
ARCHITECTURE			
	17901 2072-H0024-B1173-NA	1,050	1,050
TECHNOLOGY			
CLST	17859 2072-H0136-B1151-NA	56,000	
TMAC	43588 2072-H0468-B4430-NA	2,549	
	32617 2072-H0281-B1676-NA	13,300	71,849
DIVISION OF RESEARCH			
VP-Research	18094 2072-H0233-B0818-NA	86,839	
Institute for Space Systems Operations	11894 2072-H0244-B0844-NA	350	
Space Vacuum Epitaxy Center	36385 2072-H0453-B1730-NA	-	
Institute for Molecular Design	18197 2072-H0103-B1065-NA	10,655	
CNBRS	44342 2072-H0521-B3794-NA	4,878	
TLCC	18096 2072-H0246-B0822-NA	149,515	
TcSUH	36896 2072-H0452-B0848-NA	99,984	
CMC	10819 2072-H0248-B0850-NA	5,964	
TIMES	34116 2072-H0288-B1691-NA	175,000	
TORC	42126 2072-H0500-B4422-NA	4,084	
CBEG	45612 2072-H0546-B3838-NA	1,484	
CAM	36385 2072-H0453-B1730-NA	28,000	566,753
30% Adjusted Amount		1,892,491	
TOTAL DISTRIBUTION		6,308,305	
IDC Retained for Research Priorities		5,452,786	
IDC Retained by Provost Office		1,238,909	
TOTAL IDC RECOVERY		13,000,000	

University of Houston
FY 2012 Student Advisory Fee Committee Allocations

Sources	FY2011	-----Change-----		FY2012
	Budget	Dollars	Percent	Budget
Current Year Revenue	\$ 14,956,089	\$ 802,960	5.4%	\$ 15,759,049
Budgeted Fund Balance	300,000			632,869
Total Sources	\$ 15,256,089	\$ 802,960	5.3%	\$ 16,391,918

Allocations

*Academic Achievers - Ctr. Mexican-Am. Studies	\$ 64,433	(1,510)	-2.3%	62,923
Activities Funding Board (AFB)	128,956	10,249	7.9%	139,205
A.D. Bruce Religion Center	1	34,990		34,991
Band Program	175,514	35,886	20.4%	211,400
Blaffer Art Gallery	18,227	1,773	9.7%	20,000
Campus Activities***	806,778	(806,778)	-100.0%	
Campus Recreation	615,300	(48,968)	-8.0%	566,332
Center for Leadership & Fraternity and Sorority Life		277,448		277,448
Center for Students w/Disabilities	400,503	129	0.0%	400,632
Center for Student Involvement		622,325		622,325
Child Care Center	119,211	(2,794)	-2.3%	116,417
Commuter Services	31,358	(31,358)	-100.0%	
Counseling and Psychological Services	1,248,425	58,019	4.6%	1,306,444
Council of Ethnic Organizations (CEO)	110,319	(2,586)	-2.3%	107,733
**Dean of Students	498,195	433,836	87.1%	932,031
Forensics Society	93,747	144,516	154.2%	238,263
Frontier Fiesta Association	104,104	47,704	45.8%	151,808
Homecoming	63,655	(1,492)	-2.3%	62,163
Intercollegiate Athletics	4,362,707	45,000	1.0%	4,407,707
Learning and Assessment	68,231	(142)	-0.2%	68,089
Learning Support Services	477,003	50,717	10.6%	527,720
Metropolitan Volunteer Program	45,993	(1,078)	-2.3%	44,915
Student Government Association	130,573	(2,102)	-1.6%	128,471
Student Program Board	151,362	74,548	49.3%	225,910
Student Publications	185,471	55,595	30.0%	241,066
Student Video Network	70,071	38,006	54.2%	108,077
University Career Services	903,143	4,548	0.5%	907,691
University Center	1,401,139	(5,798)	-0.4%	1,395,341
University Health Center	1,715,942	122,568	7.1%	1,838,510
Urban Experience Program - VPSA	105,196	(774)	-0.7%	104,422
Veterans' Services	100,441	39,410	39.2%	139,851
VPSA Business Office	116,740	57	0.0%	116,797
Wellness Center	207,144	14,092	6.8%	221,236
SFAC Operating	6,144	(144)	-2.3%	6,000
Administrative Charge Increase		200,000		200,000
Budgeted Reserve	730,064	(270,064)	-37.0%	460,000
Total Allocations	\$ 15,256,090	\$ 1,135,828	7.4%	16,391,918

* Formerly, "Urban Experience Program - Ctr. Mexican-American Studies"

** Combination of DOS Handbook, Success Programs, Ombudservice, and Student Legal--formerly separate, now one allocation.

*** Campus Activities is now split between CLFSL and CSI

**UNIVERSITY OF HOUSTON
FY2012 Plan and Budget**

Contact List

<u>Name, Position Title</u>	<u>Extension</u>	<u>Email Address</u>
		<u>Budget Office</u>
Margie Hattenbach, Director	3-0655	MHattenbach@uh.edu
Karen James, DBA	3-0665	KJames@central.uh.edu
Shabana Mohiuddin, Manager	3-0656	SRMohiudoin@Central.uh.edu
Linda Watkins, Analyst	3-5336	LWatkins@uh.edu
Miranda McMorris, Analyst	3-5331	MMcMorris@central.uh.edu
Lara Umberger, Analyst	3-0653	LUmberge@uh.edu
Mayra Rodriguez, Analyst	3-0651	merodriguez6@uh.edu

Finance

Tom Ehardt, Assoc VC/VP Finance	3-5325	TEhardt@uh.edu
------------------------------------	--------	--

Planning and Institutional Effectiveness

Ed Hugetz, Assoc VC/VP Planning/University Outreach	3-3419	EHugetz@uh.edu
Chris Stanich, Executive Director Planning/Special Asst Governmental Relations	3-3232	CStanich@uh.edu

Academic and Faculty Affairs

John J. Antel, Sr VC/VP, Provost	3-9101	jantel@central.uh.edu
----------------------------------	--------	--

Sr. VC/VP, Academic Affairs, Provost

Craig Ness, Asst VP Academic Operations	3-9106	CNess@uh.edu
--	--------	--

Academic Budget & Operations

Sabrina Hassumani, Executive Director of Academic Budgets & Administration	3-9106	shassuma@central.uh.edu
---	--------	--

Human Resources

Joan Nelson, Executive Director	3-2603	jmnelson@central.uh.edu
---------------------------------	--------	--